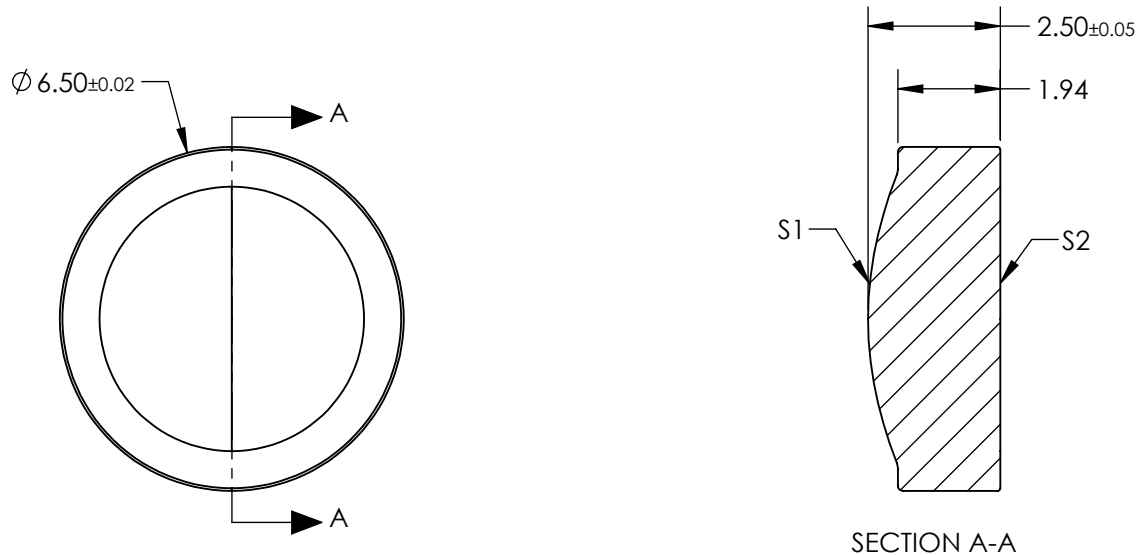



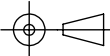
- NOTES:
- 1. SUBSTRATE:  
BLACK DIAMOND™ BD-2 (Ge28Sb12Se60)
  - 2. NUMERICAL APERTURE: 0.56
  - 3. COATING:  
R(AVG) <1.0% @ 3 - 5µm
  - 4. FOCAL LENGTH TOLERANCE: ±1%
  - 5. RoHS: COMPLIANT



**FOR INFORMATION ONLY:  
DO NOT MANUFACTURE  
PARTS TO THIS DRAWING**

SPECIFICATIONS SUBJECT TO CHANGE WITHOUT NOTICE  
DIMENSIONS ARE FOR REFERENCE ONLY

	S1	S2
SHAPE	CONVEX	PLANO
SURFACE QUALITY	80-50	80-50
MIN CLEAR APERTURE	Ø5	Ø5
BEVEL MAX FACE	PROTECTIVE AS NEEDED	PROTECTIVE AS NEEDED

		<div><div></div><div>Edmund Optics®</div></div>		
<div>THIRD ANGLE PROJECTION</div> <div></div>		TITLE	Infrared Asphere 0.56NA, 4.0mm FL, 3.0-5.0µm AR Coated	
ALL DIMS IN	mm	DWG NO	66561	SHEET 1 OF 1