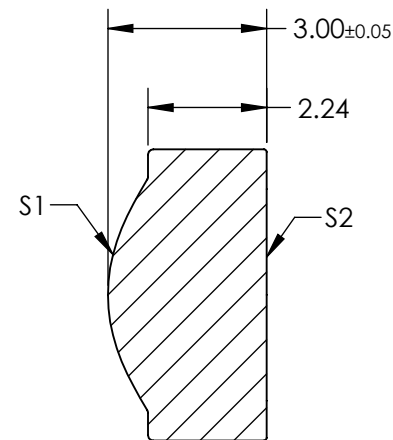
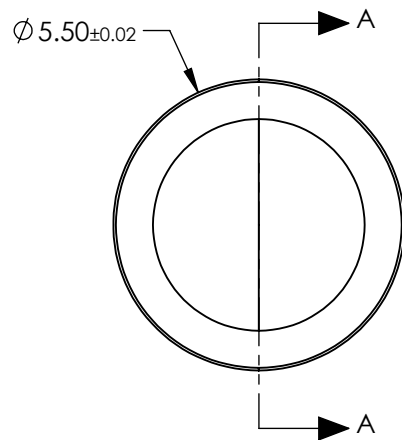


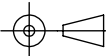

- NOTES:
- 1. SUBSTRATE:
BLACK DIAMOND™ BD-2 (Ge28Sb12Se60)
 - 2. NUMERICAL APERTURE: 0.85
 - 3. COATING:
R(AVG) <1.0% @ 3 - 5µm
 - 4. FOCAL LENGTH TOLERANCE: ±1%
 - 5. RoHS: COMPLIANT



SECTION A-A

**FOR INFORMATION ONLY:
DO NOT MANUFACTURE
PARTS TO THIS DRAWING**

SPECIFICATIONS SUBJECT TO CHANGE WITHOUT NOTICE
DIMENSIONS ARE FOR REFERENCE ONLY

	S1	S2	<div><div><div>THIRD ANGLE PROJECTION</div></div><div>ALL DIMS INmm</div></div> <div><div><div><div></div><div>Edmund Optics®</div></div><div><div>TITLE</div><div>Infrared Asphere 0.85NA, 1.87mm FL, 3.0-5.0µm AR Coated</div></div></div></div>				
SHAPE	CONVEX	PLANO					
SURFACE QUALITY	80-50	80-50					
MIN CLEAR APERTURE	Ø4	Ø4					
BEVEL MAX FACE	PROTECTIVE AS NEEDED	PROTECTIVE AS NEEDED	DWG NO	66565	SHEET 1 OF 1		