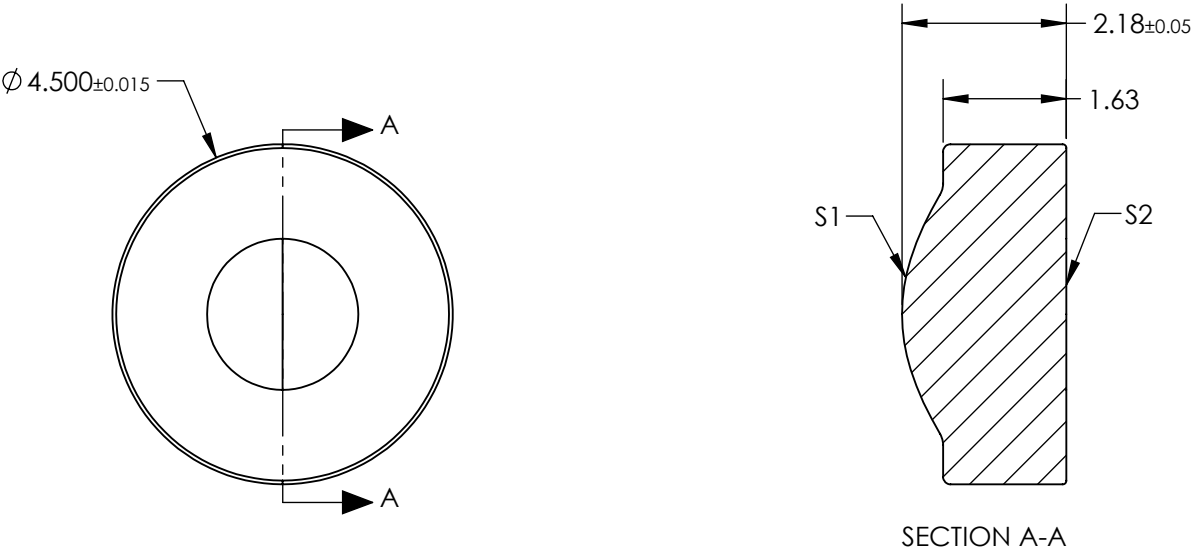


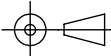
- NOTES:
- 1. SUBSTRATE:  
BLACK DIAMOND™ BD-2 (Ge28Sb12Se60)
  - 2. NUMERICAL APERTURE: 0.83
  - 3. COATING:  
R(AVG) <1.0% @ 1.8 - 3.0µm
  - 4. FOCAL LENGTH TOLERANCE: ±1%
  - 5. RoHS: COMPLIANT



**FOR INFORMATION ONLY:  
DO NOT MANUFACTURE  
PARTS TO THIS DRAWING**

SPECIFICATIONS SUBJECT TO CHANGE WITHOUT NOTICE  
DIMENSIONS ARE FOR REFERENCE ONLY

	S1	S2
SHAPE	CONVEX	PLANO
SURFACE QUALITY	80-50	80-50
MIN CLEAR APERTURE	$\phi 3.00$	$\phi 3.00$
BEVEL MAX FACE	PROTECTIVE AS NEEDED	PROTECTIVE AS NEEDED

		<div><div><div></div><div></div></div><div>Edmund Optics®</div></div>	
<div>THIRD ANGLE PROJECTION</div> <div></div>		<div>TITLE</div> <div>Infrared Asphere 0.83NA, 1.47mm FL, 1.8-3.0µm AR Coated</div>	
<div>ALL DIMS IN</div>	<div>mm</div>	<div>DWG NO</div> <div>88071</div>	<div>SHEET</div> <div>1 OF 1</div>