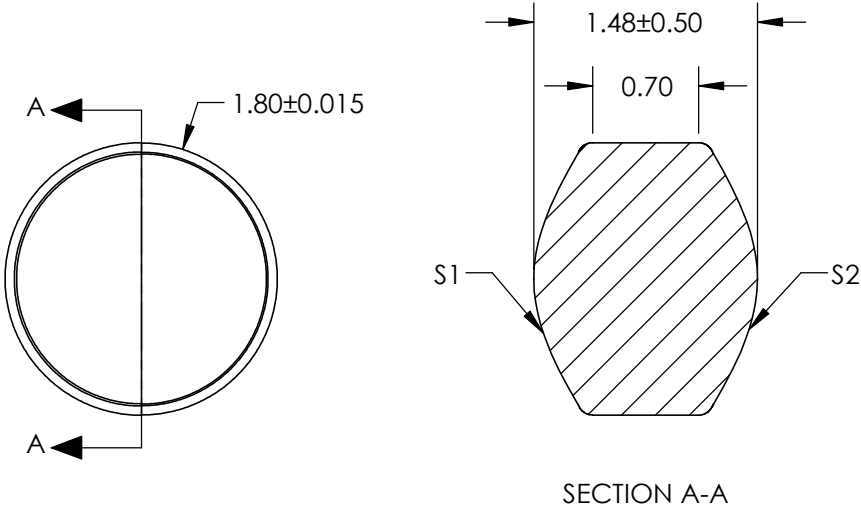



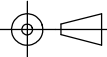
NOTES:

- 1. SUBSTRATE:  
D-ZK3
- 2. NUMERICAL APERTURE:  
OBJECT: 0.30  
IMAGE: 0.30  
WD, OBJECT (mm): 1.67  
WD, IMAGE (mm): 1.67
- 3. COATING  
S1 & S2: R(ABS) <1.0% @ 600 - 1050nm
- 4. FOCAL LENGTH TOLERANCE: ±1%
- 5. DESIGN WAVELENGTH: 980nm



**FOR INFORMATION ONLY:  
DO NOT MANUFACTURE  
PARTS TO THIS DRAWING**

SPECIFICATIONS SUBJECT TO CHANGE WITHOUT NOTICE  
DIMENSIONS ARE FOR REFERENCE ONLY

	S1	S2	EFL	1.16	 <b>Edmund Optics®</b>		
			BFL	0.51			
SHAPE	CONVEX	CONVEX	THIRD ANGLE PROJECTION 	TITLE	LightPath 354450   1.8mm Dia., 0.30 NA, BBAR (600-1050nm), Molded Aspheric Lens		
SURFACE QUALITY	40-20	40-20					
CLEAR APERTURE	Ø 1.14	Ø 1.14					
BEVEL	PROTECTED AS NEEDED	PROTECTED AS NEEDED	ALL DIMS IN	mm	DWG NO	16683	SHEET 1 OF 1