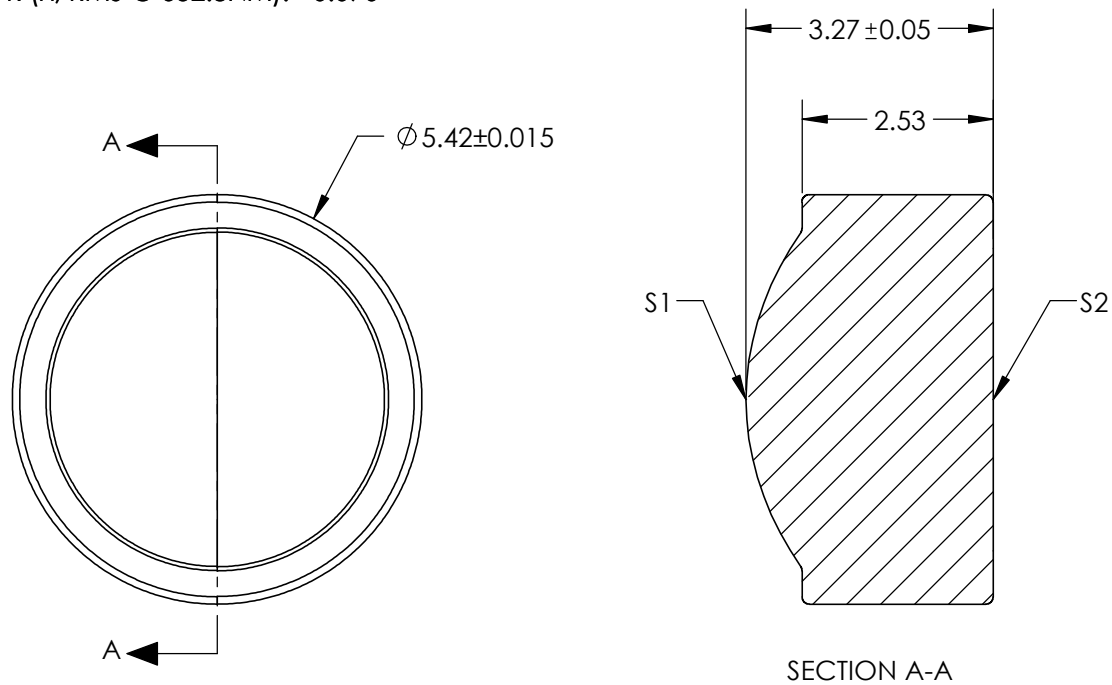

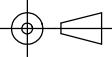


- NOTES:
- 1. SUBSTRATE:
D-ZLAF52LA
 - 2. NUMERICAL APERTURE: 0.47
 - 3. COATING
S1 & S2: R(AVG)≤0.5% @ 350 - 700nm
 - 4. FOCAL LENGTH TOLERANCE: ±1%
 - 5. TRANSMITTED WAVEFRONT ERROR (λ, RMS @ 632.8NM): <0.070
 - 6. DESIGN WAVELENGTH: 780nm



**FOR INFORMATION ONLY:
DO NOT MANUFACTURE
PARTS TO THIS DRAWING**

SPECIFICATIONS SUBJECT TO CHANGE WITHOUT NOTICE
DIMENSIONS ARE FOR REFERENCE ONLY

	S1	S2	EFL	4.47	 Edmund Optics®		
			WD	3.10			
SHAPE	CONVEX	PLANO		TITLE	LightPath 355022 5.42mm Dia., 0.47 NA, BBAR (350-700nm), Molded Aspheric Lens		
SURFACE QUALITY	40-20	40-20					
CLEAR APERTURE	Ø 4.20	Ø 2.77					
BEVEL	PROTECTED AS NEEDED	PROTECTED AS NEEDED	ALL DIMS IN	mm	DWG NO	16687	SHEET 1 OF 1