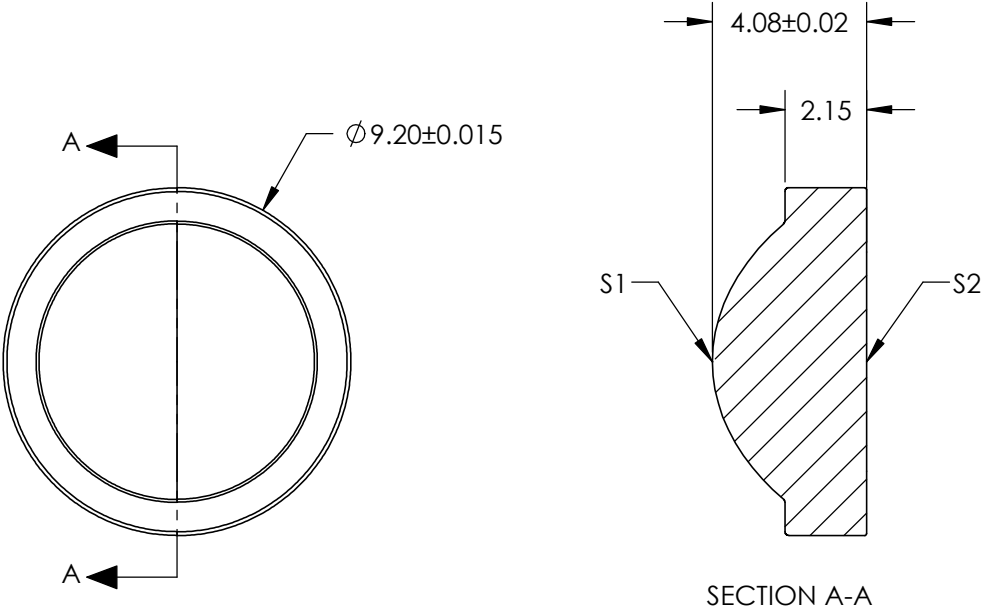

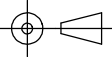


- NOTES:
- 1. SUBSTRATE:
D-ZK3
 - 2. NUMERICAL APERTURE: 0.54
 - 3. COATING
S1 & S2: R(AVG) ≤0.5% @ 350 - 700nm
 - 4. FOCAL LENGTH TOLERANCE: ±1%
 - 5. TRANSMITTED WAVEFRONT ERROR (λ, RMS @ 632.8NM): <0.087
 - 6. DESIGN WAVELENGTH: 633nm



**FOR INFORMATION ONLY:
DO NOT MANUFACTURE
PARTS TO THIS DRAWING**

SPECIFICATIONS SUBJECT TO CHANGE WITHOUT NOTICE
DIMENSIONS ARE FOR REFERENCE ONLY

	S1	S2	EFL	6.75	 Edmund Optics®		
			WD	4.30			
SHAPE	CONVEX	PLANO			TITLE	LightPath 354115 9.2mm Dia., 0.54 NA, BBAR (350-700nm), Molded Aspheric Lens	
SURFACE QUALITY	60-40	60-40					
CLEAR APERTURE	Ø 7.00	Ø 5.30	ALL DIMS IN	mm	DWG NO	16691	SHEET 1 OF 1
BEVEL	PROTECTED AS NEEDED	PROTECTED AS NEEDED					