

NOTES:

1. SUBSTRATE:

D-ZLAF52LA

2. NUMERICAL APERTURE: 0.50

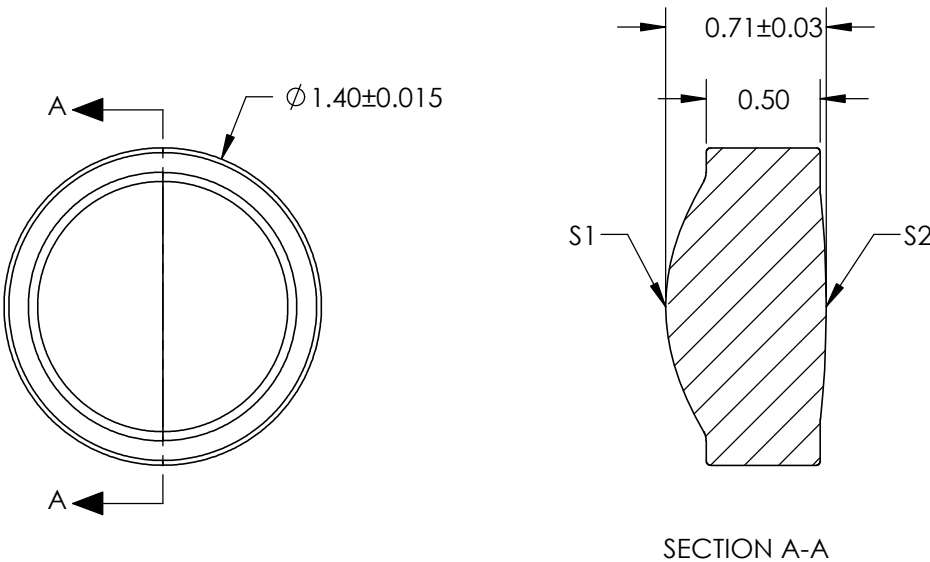
3. COATING

S1 & S2: R(ABS) <1.0% @ 600 - 1050nm

4. FOCAL LENGTH TOLERANCE: $\pm 1\%$


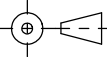
5. TRANSMITTED WAVEFRONT ERROR (λ , RMS @ 632.8NM): <0.150

6. DESIGN WAVELENGTH: 1550nm



**FOR INFORMATION ONLY:
DO NOT MANUFACTURE
PARTS TO THIS DRAWING**

SPECIFICATIONS SUBJECT TO CHANGE WITHOUT NOTICE
DIMENSIONS ARE FOR REFERENCE ONLY

	S1	S2	EFL	1.05	 Edmund Optics®		
			WD	0.61			
SHAPE	CONVEX	CONVEX		TITLE	LightPath 355198 1.4mm Dia., 0.50 NA, BBAR (600-1050nm), Molded Aspheric Lens		
SURFACE QUALITY	40-20	40-20					
CLEAR APERTURE	Ø 1.10	Ø 0.84					
BEVEL	PROTECTED AS NEEDED	PROTECTED AS NEEDED	ALL DIMS IN	mm	DWG NO	16703	SHEET 1 OF 1