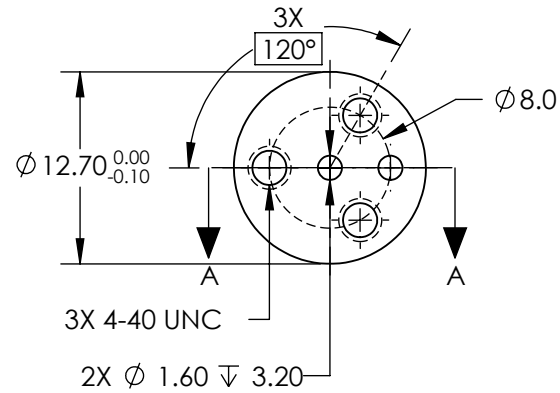
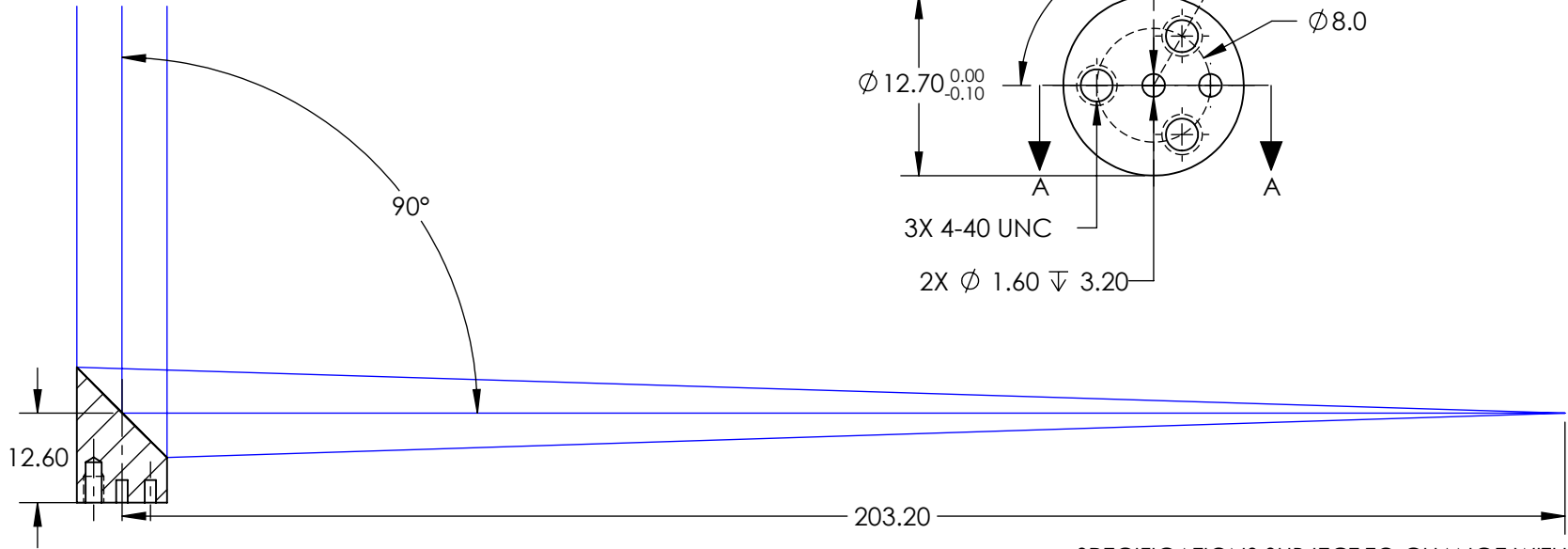
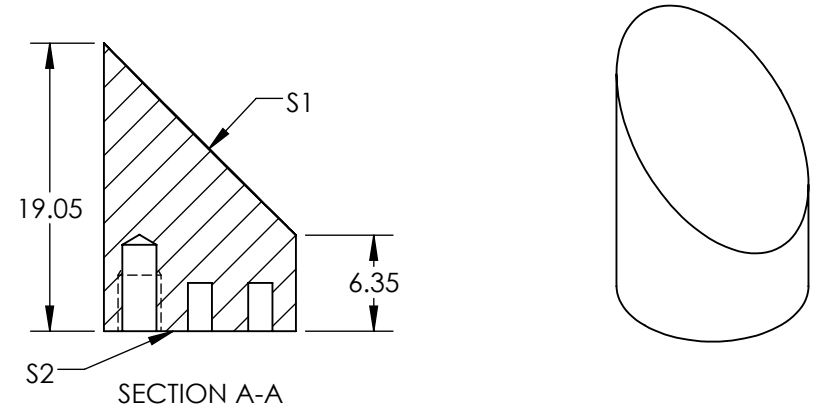


NOTES:

1. SUBSTRATE MATERIAL:
ALUMINUM
2. FINISH (EXCEPT SURFACE S1 & S2):
BLACK ANODIZED
3. COATING (APPLY ACROSS CLEAR APERTURE)
S1: ULTRAFAST-ENHANCED SILVER (600-1050nm)
R(AVG) >99% @ 600 - 1000nm @ 0°
R(S) >99% @ 540 - 1000nm @ 45°
R(P) >98.5% @ ~730 - 870nm @ 45°
4. SURFACE ROUGHNESS: <50 Å RMS
5. FOCAL LENGTH TOLERANCE: ±1%
6. ROHS COMPLIANT

**FOR INFORMATION ONLY:
DO NOT MANUFACTURE
PARTS TO THIS DRAWING**



SPECIFICATIONS SUBJECT TO CHANGE WITHOUT NOTICE
DIMENSIONS ARE FOR REFERENCE ONLY

REV. A	S1
SHAPE	PARABOLIC
SURFACE FIGURE AT 632.8nm (RMS)	$\lambda/4$
CLEAR APERTURE	90%
BEVEL	PROTECTIVE AS NEEDED



ALL DIMS IN

mm

EO® Edmund Optics®

12.7mm Dia. x 203.2mm EFL, ULTRAFAST-
ENHANCED SILVER COATED, 50Å OAP
MIRROR

DWG NO

17138

SHEET
1 OF 1