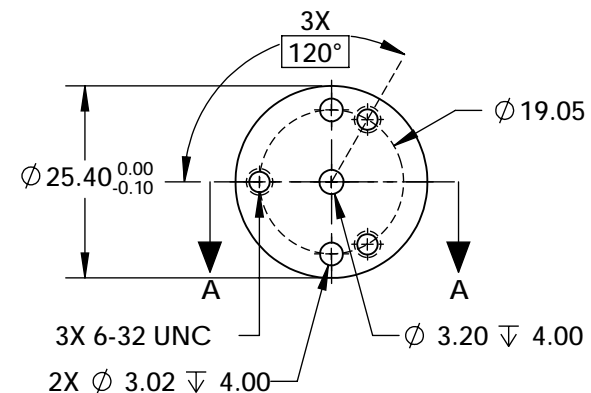
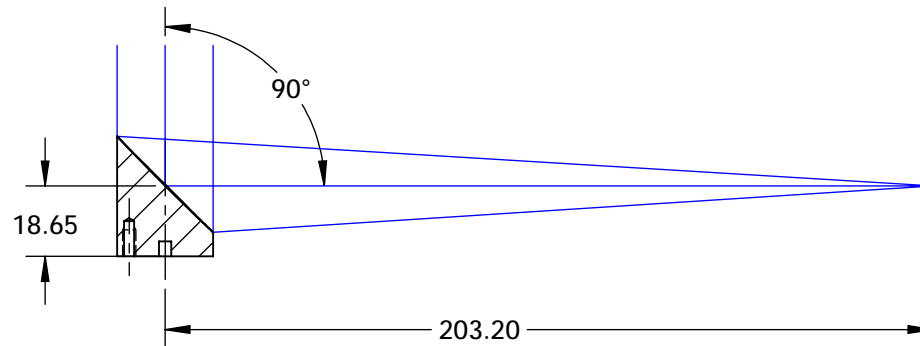
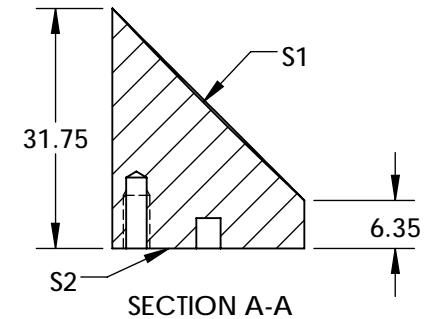
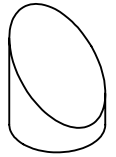


NOTES:

- SUBSTRATE MATERIAL:
ALUMINUM
- FINISH (EXCEPT SURFACE S1 & S2):
BLACK ANODIZED
- COATING (APPLY ACROSS CLEAR APERTURE)
S1: ULTRAFAST-ENHANCED SILVER (600 - 1050nm)
R(AVG) >99% @ 600 - 1000nm @ 0°
R(S) >99% @ 540 - 1000nm @ 45°
R(P) >98.5% @ ~730 - 870nm @ 45°
- GDD: 0 ±20fs2 @ 600 - 1050nm
- SURFACE ROUGHNESS: <50 Å RMS
- FOCAL LENGTH TOLERANCE: ±1%
- ROHS COMPLIANT

**FOR INFORMATION ONLY:
DO NOT MANUFACTURE
PARTS TO THIS DRAWING**



SPECIFICATIONS SUBJECT TO CHANGE WITHOUT NOTICE
DIMENSIONS ARE FOR REFERENCE ONLY

REV. A	S1
SHAPE	PARABOLIC
SURFACE FIGURE AT 632.8nm (RMS)	$\lambda/4$
CLEAR APERTURE	90%
BEVEL	PROTECTIVE AS NEEDED



ALL DIMS IN mm

Edmund Optics®

25.4mm Dia. x 203.2mm EFL, 600-1000nm
ULTRAFAST-ENHANCED SILVER COATED, 50Å OAP
MIRROR

DWG NO 17146

SHEET
1 OF 1