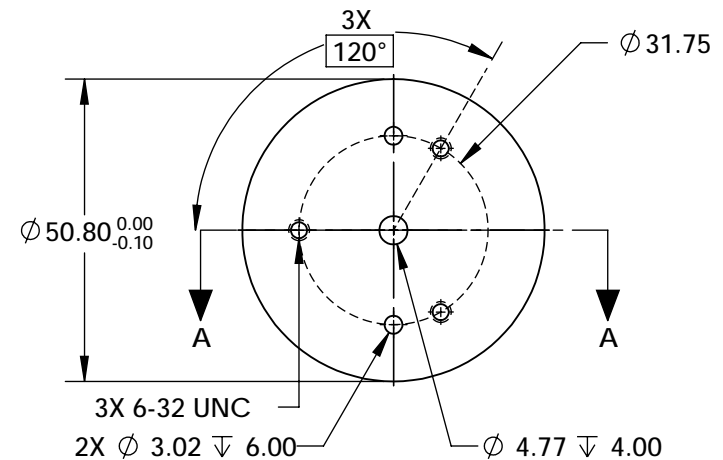
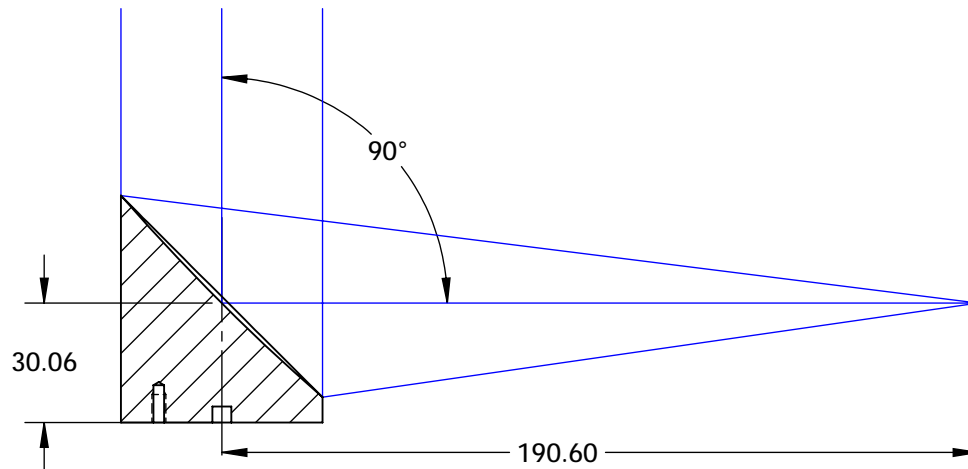
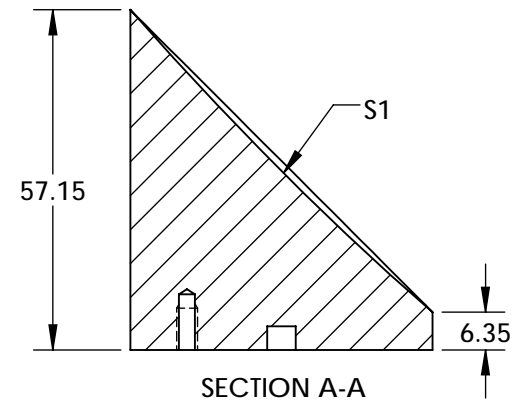
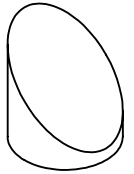


NOTES:

- SUBSTRATE MATERIAL:  
ALUMINUM
- FINISH (EXCEPT SURFACE S1):  
BLACK ANODIZED
- COATING (APPLY ACROSS CLEAR APERTURE)  
S1: ULTRAFAST-ENHANCED SILVER (600 - 1050nm)  
R(AVG) >99% @ 600 - 1000nm @ 0°  
R(S) >99% @ 540 - 1000nm @ 45°  
R(P) >98.5% @ ~730 - 870nm @ 45°
- GDD: 0 ±20fs2 @ 600 - 1050nm
- SURFACE ROUGHNESS: <50 Å RMS
- FOCAL LENGTH TOLERANCE: ±1%
- ROHS COMPLIANT

**FOR INFORMATION ONLY:  
DO NOT MANUFACTURE  
PARTS TO THIS DRAWING**



SPECIFICATIONS SUBJECT TO CHANGE WITHOUT NOTICE  
DIMENSIONS ARE FOR REFERENCE ONLY

REV. A	S1
SHAPE	PARABOLIC
SURFACE FIGURE AT 632.8nm (RMS)	$\lambda/4$
CLEAR APERTURE	90%
BEVEL	PROTECTIVE AS NEEDED



ALL DIMS IN

mm

**EO<sup>®</sup> Edmund Optics<sup>®</sup>**

TITLE

50.8mm Dia. x 190.6mm EFL, 600-1000nm  
ULTRAFAST-ENHANCED SILVER COATED, 50Å OAP  
MIRROR

DWG NO

17152

SHEET  
1 OF 1