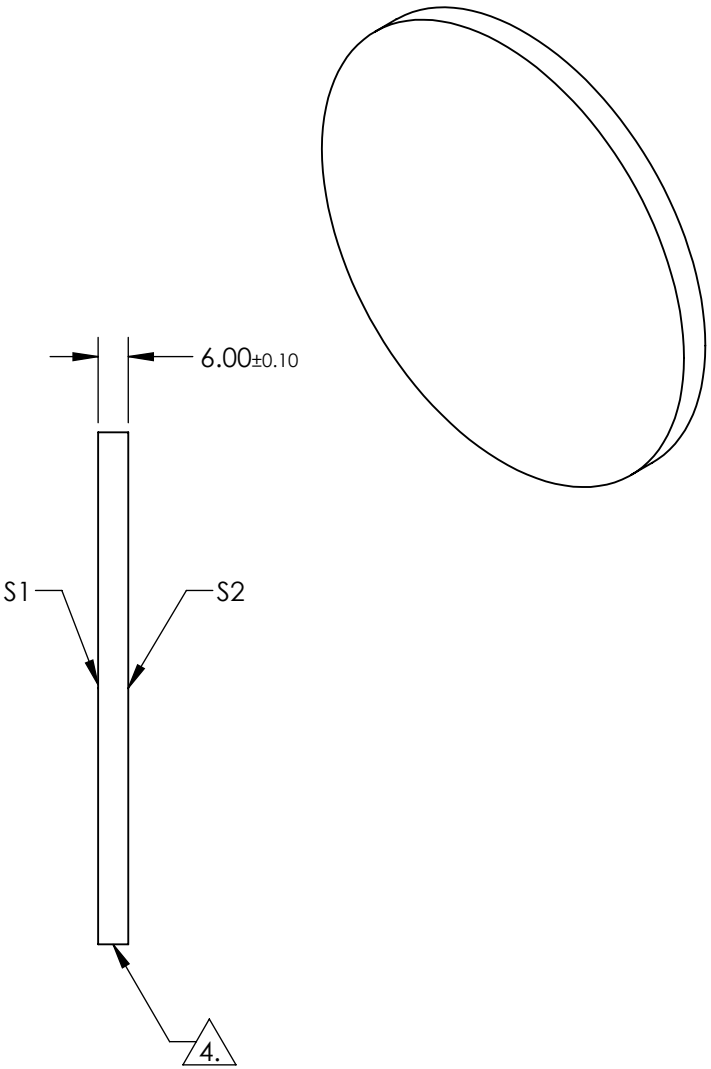
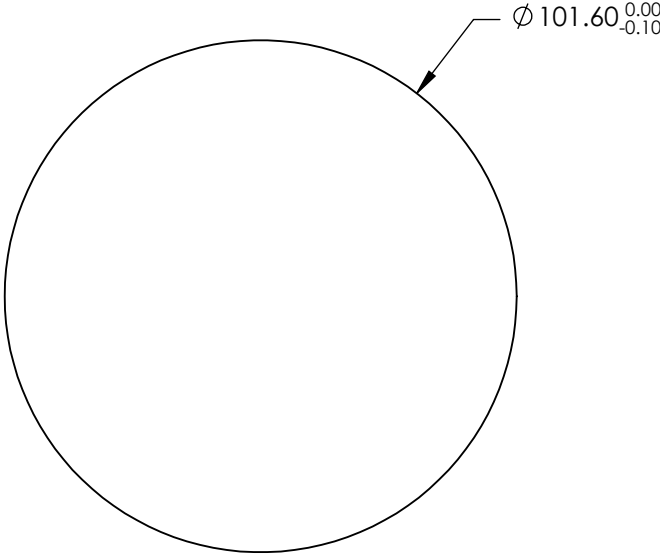


NOTES:

- 1. SUBSTRATE: Zinc Selenide (ZnSe)
- 2. SURFACE S1 TO PARALLEL WITH SURFACE S2 TO <3 arcmin
- 3. COATING (APPLY ACROSS CLEAR APERTURE)
- S1&S2: NONE

4. FINE GRIND SURFACE

- 5. ROHS COMPLIANT



**FOR INFORMATION ONLY:
DO NOT MANUFACTURE
PARTS TO THIS DRAWING**

SPECIFICATIONS SUBJECT TO CHANGE WITHOUT NOTICE
DIMENSIONS ARE FOR REFERENCE ONLY

	S1	S2
SHAPE	PLANO	PLANO
SURFACE FLATNESS	$\lambda/10 @ 10.6\mu\text{m}$	$\lambda/10 @ 10.6\mu\text{m}$
SURFACE QUALITY	60-40	60-40
CLEAR APERTURE	$\varnothing 91.40$	$\varnothing 91.40$
BEVEL	PROTECTED AS NEEDED	PROTECTED AS NEEDED

THIRD ANGLE PROJECTION

ALL DIMS IN mm

Edmund Optics®			
TITLE	101.6mm Dia. x 6mm Thickness, Uncoated, ZnSe Window		
DWG NO	17609	SHEET 1 OF 1	