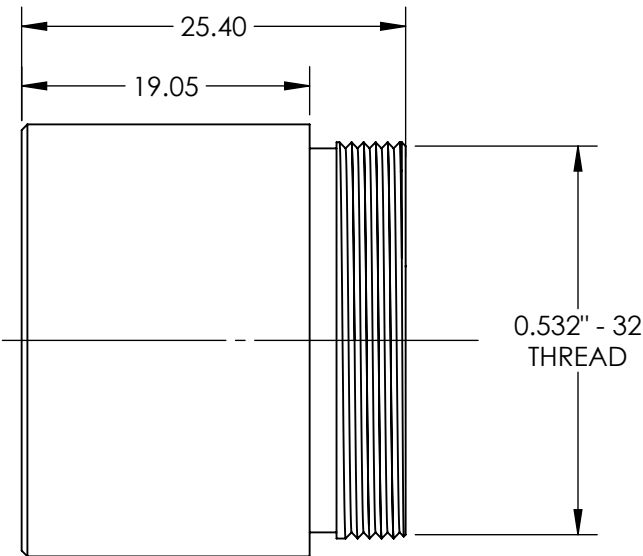
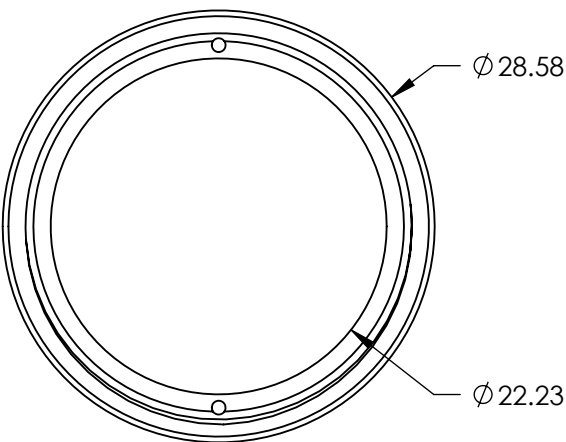


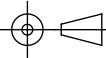
- NOTES:
- 1. SUBSTRATE: ANODIZED ALUMINUM
  - 2. ROHS COMPLIANT



**FOR INFORMATION ONLY:**  
**DO NOT MANUFACTURE**  
**PARTS TO THIS DRAWING**

SPECIFICATIONS SUBJECT TO CHANGE WITHOUT NOTICE  
DIMENSIONS ARE FOR REFERENCE ONLY

**EO**® Edmund Optics®

THIRD ANGLE PROJECTION 		TITLE	22.2mm APERTURE, 38mm FL UV/VIS FIBER REFOCUSING ASSEMBLY	
ALL DIMS IN	mm	DWG NO	17573	SHEET 1 OF 1