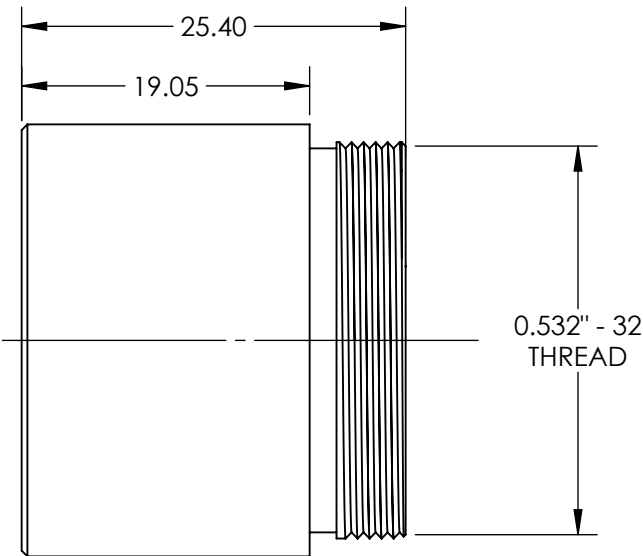
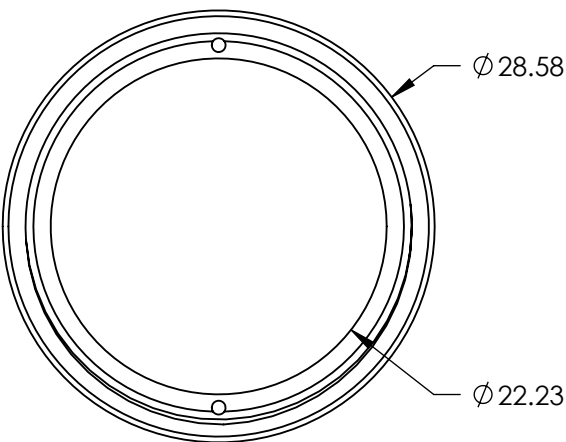


- NOTES:
- 1. SUBSTRATE: ANODIZED ALUMINUM
  - 2. ROHS COMPLIANT



**FOR INFORMATION ONLY:**  
**DO NOT MANUFACTURE**  
**PARTS TO THIS DRAWING**

SPECIFICATIONS SUBJECT TO CHANGE WITHOUT NOTICE  
DIMENSIONS ARE FOR REFERENCE ONLY

THIRD ANGLE PROJECTION		Edmund Optics®		
ALL DIMS IN		TITLE	22.2mm APERTURE, 51mm FL UV/VIS FIBER REFOCUSING ASSEMBLY	
mm		DWG NO	17574	SHEET 1 OF 1