

NOTES:

- 1. SUBSTRATE:
FUSED SILICA
- 2. SURFACE S2 TO BE PARALLEL TO S1 TO WITHIN <3 ARCMIN
- 3. COATING (APPLY ACROSS CLEAR APERTURE)

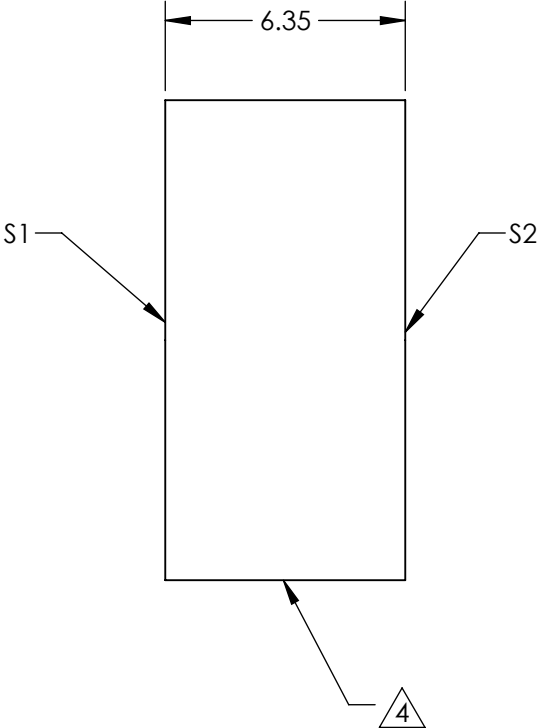
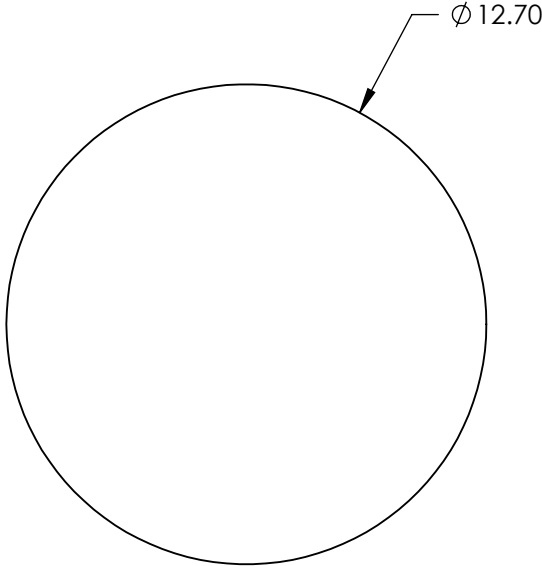
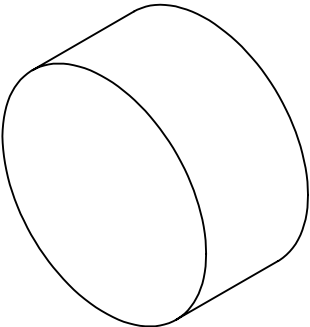
Surface 1: Rabs: >95% @ 266nm, Tabs: >98% @ 532nm, Tabs: >98% @ 1064nm
Surface 2: Rabs: <1.0% @ 532nm, Rabs <1.0% @ 1064nm

DAMAGE THRESHOLD, PULSED
Surface 1: 1 J/cm2 @ 266nm, 20ns, 20Hz 5 J/cm2 @ 532nm, 20ns, 20Hz 7.5 J/cm2 @ 1064nm, 20ns, 20Hz
Surface 2: 10 J/cm2 @ 20ns, 20Hz @ 532nm 15 J/cm2 @ 20ns, 20Hz @ 1064nm

4. FINE GRIND SURFACE

5. FOCAL LENGTH TOLERANCE:

6. ROHS COMPLIANT



**FOR INFORMATION ONLY:
DO NOT MANUFACTURE
PARTS TO THIS DRAWING**

SPECIFICATIONS SUBJECT TO CHANGE WITHOUT NOTICE
DIMENSIONS ARE FOR REFERENCE ONLY

	S1	S2
SHAPE	PLANO	PLANO
SURFACE QUALITY	10-5	10-5
CLEAR APERTURE	>90 %	>90 %
COATING APERTURE	>90 %	>90 %
BEVEL	PROTECTED AS NEEDED	PROTECTED AS NEEDED



ALL DIMS IN mm

Edmund Optics®

TITLE

12.7mm DIA., 532 & 1064nm T, 266nm R 0DEG
Harmonic Separator

DWG NO

22658

SHEET
1 OF 8