

NOTES:

- 1. SUBSTRATE:  
FUSED SILICA
- 2. SURFACE S2 TO BE PARALLEL TO S1 TO WITHIN <3 ARCMIN
- 3. COATING (APPLY ACROSS CLEAR APERTURE)

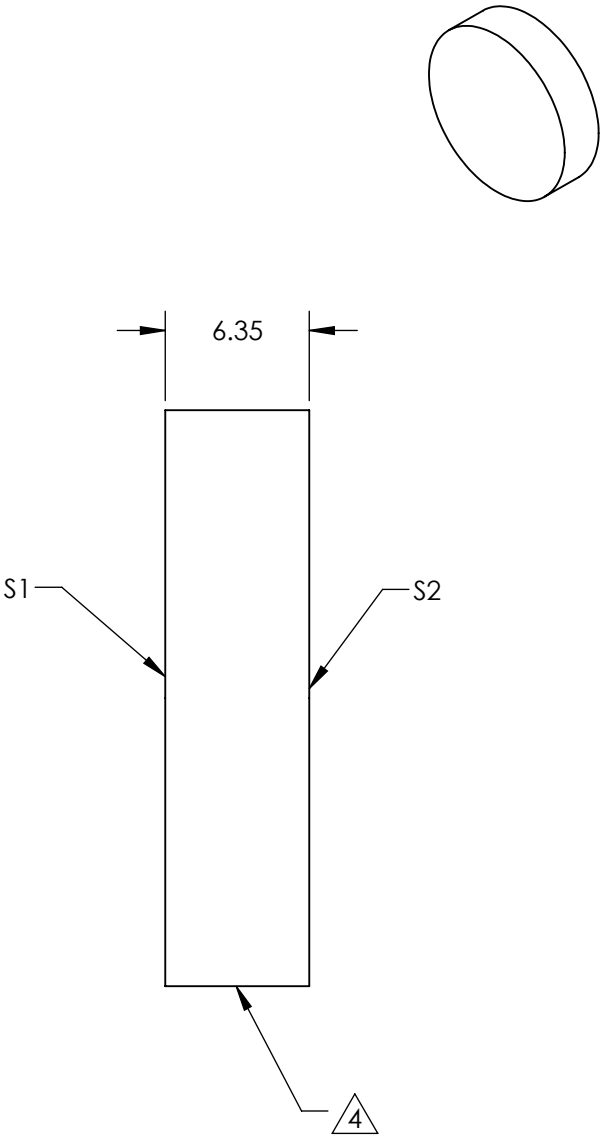
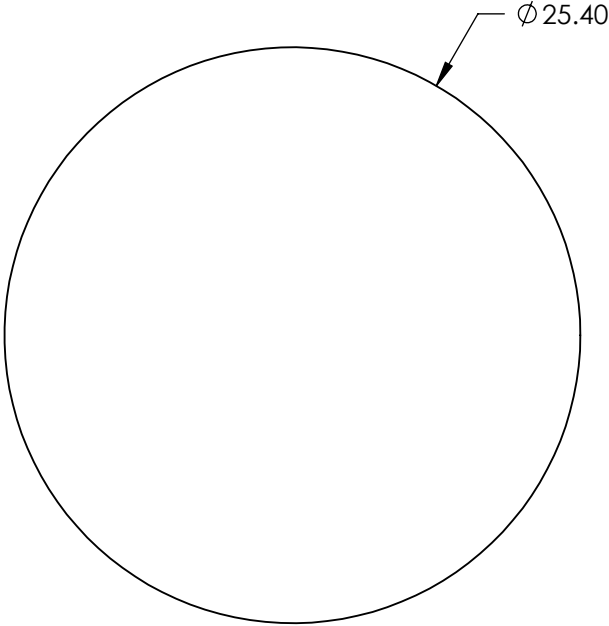
Surface 1: Rabs: >99% @ 532nm, Tabs: >95% @ 1064nm  
Surface 2: Rabs: <0.5% @ 1064nm

DAMAGE THRESHOLD, PULSED  
Surface 1: 7.5 J/cm2 @ 532nm, 20ns, 20Hz    7.5 J/cm2 @ 1064nm, 20ns, 20Hz  
Surface 2: 15 J/cm2 @ 1064nm, 20ns, 20Hz

4. FINE GRIND SURFACE

5. FOCAL LENGTH TOLERANCE:

6. ROHS COMPLIANT

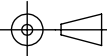


**FOR INFORMATION ONLY:  
DO NOT MANUFACTURE  
PARTS TO THIS DRAWING**

SPECIFICATIONS SUBJECT TO CHANGE WITHOUT NOTICE  
DIMENSIONS ARE FOR REFERENCE ONLY

	S1	S2
SHAPE	PLANO	PLANO
SURFACE QUALITY	10-5	10-5
CLEAR APERTURE	>85 %	>85 %
COATING APERTURE	>85 %	>85 %
BEVEL	PROTECTED AS NEEDED	PROTECTED AS NEEDED

THIRD ANGLE  
PROJECTION



ALL DIMS IN

mm



Edmund Optics®

TITLE

25.4mm DIA., 1064nm T, 532nm R 0DEG  
Harmonic Separator

DWG NO

22669

SHEET  
6 OF 8