

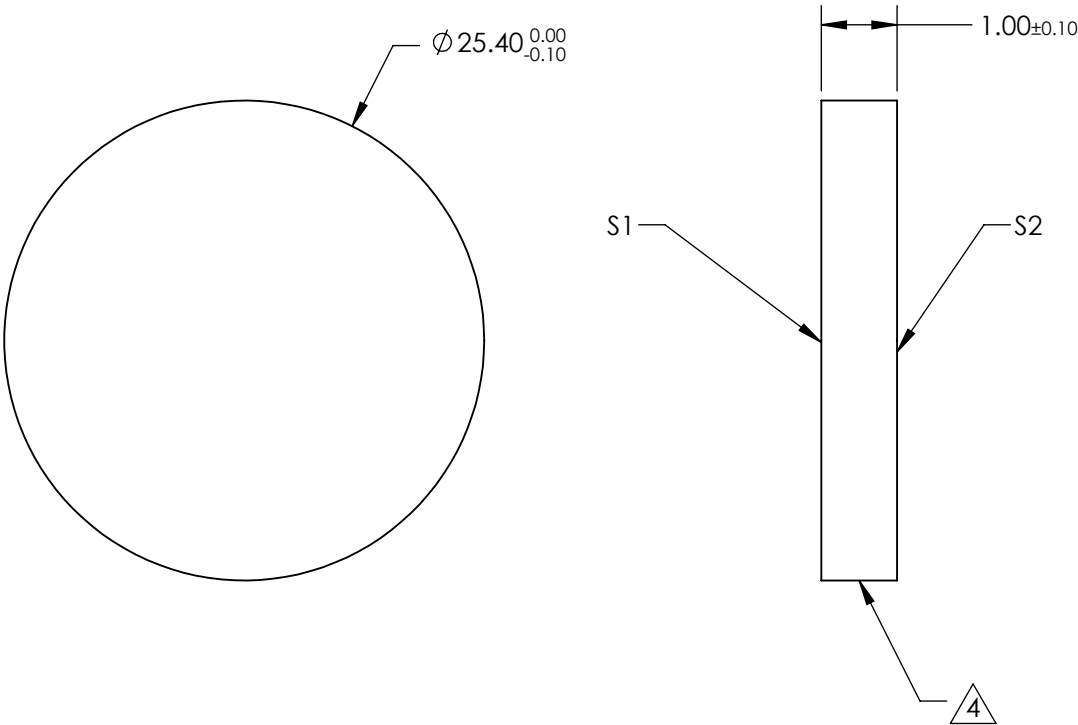
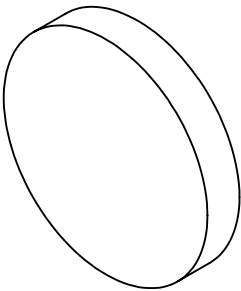
NOTES:

- 1. SUBSTRATE:  
SILICON (Si)
- 2. SURFACE S2 TO BE PARALLEL TO S1 WITHIN <3 ARCMIN
- 3. COATING (APPLY ACROSS CLEAR APERTURE)

S1&S2: BBAR(3000-5000nm)  
Ravg <3.0% @ 3 - 5µm

4. FINE GRIND SURFACE


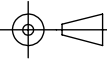
- 5. ROHS COMPLIANT



**FOR INFORMATION ONLY:  
DO NOT MANUFACTURE  
PARTS TO THIS DRAWING**

SPECIFICATIONS SUBJECT TO CHANGE WITHOUT NOTICE  
DIMENSIONS ARE FOR REFERENCE ONLY

	S1	S2
SHAPE	PLANO	PLANO
CLEAR APERTURE	Ø 22.86	Ø 22.86
SURFACE QUALITY	60-40	60-40
SURFACE FLATNESS	1λ	1λ
BEVEL	PROTECTED AS NEEDED	PROTECTED AS NEEDED

 Edmund Optics®			
THIRD ANGLE PROJECTION 		TITLE	25.4mm Dia. x 1mm Thickness 3-5µm Coated Silicon Window
ALL DIMS IN	mm	DWG NO	20035
			SHEET 1 OF 1