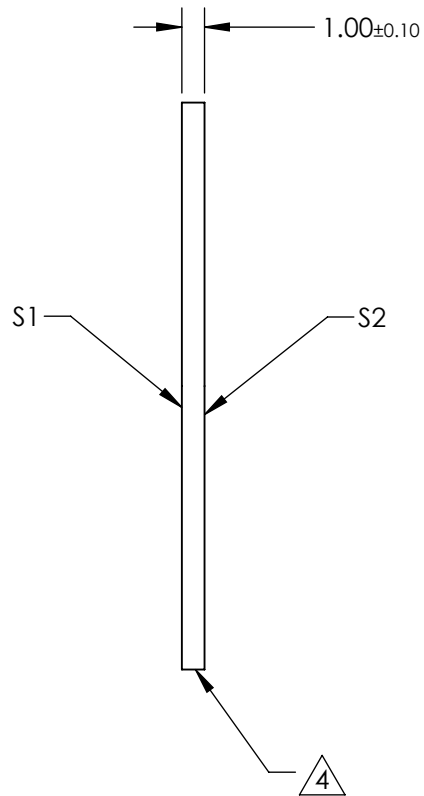
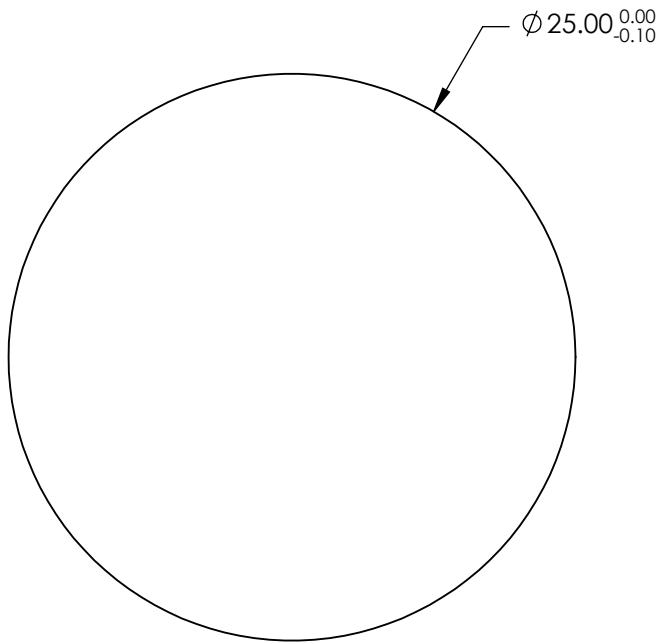
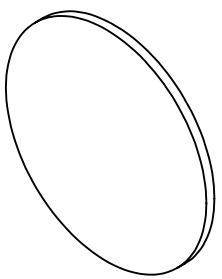


NOTES:

- 1. SUBSTRATE:
Calcium Fluoride (CaF2) Vacuum UV Grade
- 2. SURFACE S2 TO BE PARALLEL WITH S1 TO <1
- 3. COATING (APPLY ACROSS CLEAR APERTURE)
S1 & S2: BBAR (2000-5000nm)
- 4. FINE GRIND SURFACE




**FOR INFORMATION ONLY:
DO NOT MANUFACTURE
PARTS TO THIS DRAWING**

SPECIFICATIONS SUBJECT TO CHANGE WITHOUT NOTICE
DIMENSIONS ARE FOR REFERENCE ONLY

	S1	S2
SHAPE	PLANO	PLANO
SURFACE QUALITY	40-20	40-20
CLEAR APERTURE	Ø 22.50	Ø 22.50
BEVEL	PROTECTED AS NEEDED	PROTECTED AS NEEDED

THIRD ANGLE
PROJECTION

ALL DIMS IN mm

 **Edmund Optics®**

TITLE	25mm Dia. x 1mm Thick, BBAR (2000-5000nm) Coated Calcium Fluoride Window	
DWG NO	23515	SHEET 9 OF 28