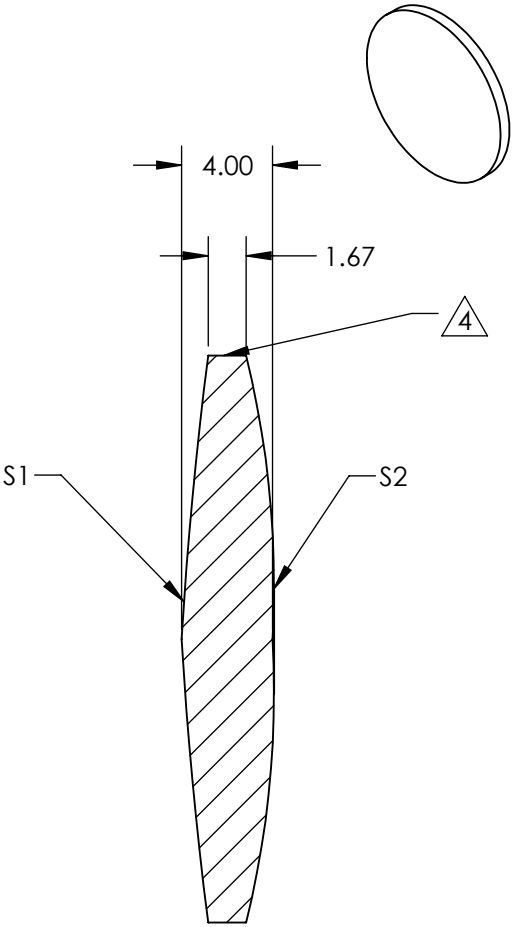
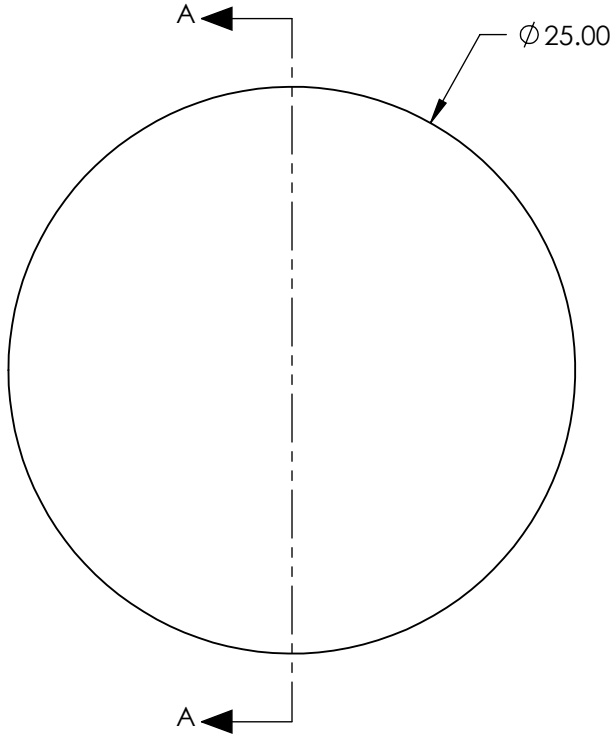


NOTES:

1. SUBSTRATE:
Fused Silica (or equivalent)
2. CENTERING TOLERANCE (AT 587.6nm): <1' ARCMIN
3. COATING (APPLY ACROSS CLEAR APERTURE)
- S1&S2: NONE
4. FINE GRIND SURFACE (ADD INK NOTE AS NEEDED)
5. FOCAL LENGTH (EFL): 75mm
BACK FOCAL LENGTH (BFL): 72.76mm
6. ROHS COMPLIANT
7. PROTECTIVE BEVEL AS NEEDED
8. POWER, IRREGULARITY, AND SURFACE QUALITY
SPECIFICATIONS APPLY ACROSS CLEAR APERTURE
9. DESIGN WAVELENGTH: 587.6nm


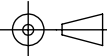


SECTION A-A

FOR INFORMATION ONLY:
DO NOT MANUFACTURE
PARTS TO THIS DRAWING

SPECIFICATIONS SUBJECT TO CHANGE WITHOUT NOTICE
DIMENSIONS ARE FOR REFERENCE ONLY

	S1	S2
SHAPE	PLANO	PLANO
RADIUS	185.00	41.95
SURFACE QUALITY	10-5	10-5
CLEAR APERTURE	Ø 22.5	Ø 22.5
BEVEL	PROTECTED AS NEEDED	PROTECTED AS NEEDED

 Edmund Optics®			
THIRD ANGLE PROJECTION 		TITLE	LENS DCX BF 25 X 75 UNCTD TS
ALL DIMS IN	mm	DWG NO	22571
			SHEET 7 OF 8