

NOTES:

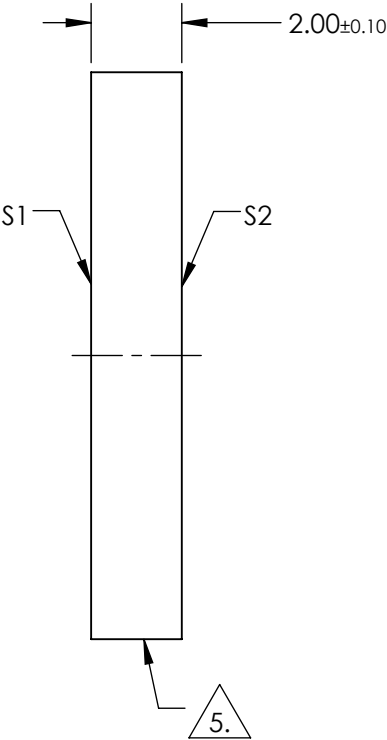
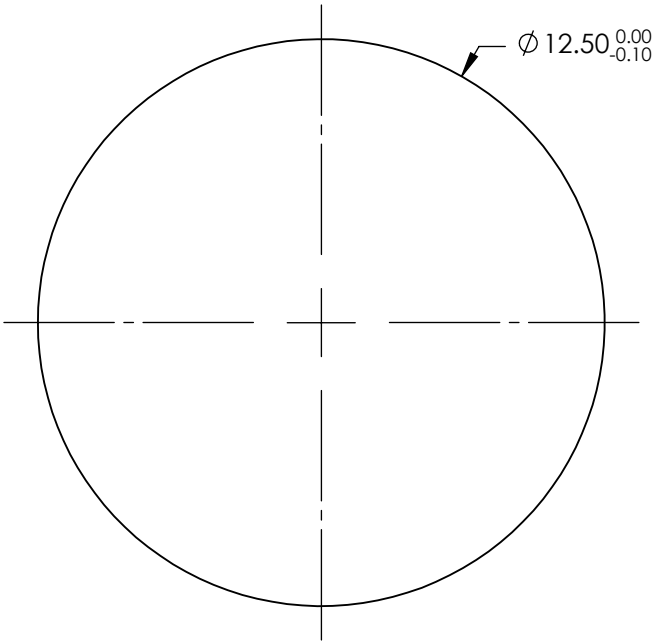
- 1. SUBSTRATE:  
SUPRASIL® 300
- 2. SURFACE S2 TO BE PARALLEL TO SURFACE S1 TO WITHIN < 5 ARCSEC
- 3. COATING (APPLY ACROSS COATING APERTURE)

S1 & S2: NIR II  
R(ABS) ≤ 1.5% FROM 750-800nm  
R(ABS) ≤ 1.0% FROM 800-1550nm  
R(AVG) ≤ 0.7% FROM 750-1550nm

- 4. TRANSMITTED WAVEFRONT DISTORTION P-V: ≤ 0.10 WAVE @ 632.8nm


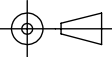
5. FINE GRIND SURFACE

- 6. ROHS COMPLIANT



**FOR INFORMATION ONLY:**  
**DO NOT MANUFACTURE**  
**PARTS TO THIS DRAWING**

SPECIFICATIONS SUBJECT TO CHANGE WITHOUT NOTICE  
DIMENSIONS ARE FOR REFERENCE ONLY

	S1	S2	 Edmund Optics®			
SHAPE	PLANO	PLANO		TITLE	12.5mm DIA., 2mm THICK, NIR II COATED, SUPRASIL WINDOW	
SURFACE QUALITY	10-5	10-5		DWG NO	25588	SHEET 1 OF 1
WAVELENGTH RANGE	750 - 1550nm	750 - 1550nm				
BEVEL	PROTECTIVE AS NEEDED	PROTECTIVE AS NEEDED	ALL DIMS IN mm			