

NOTES:

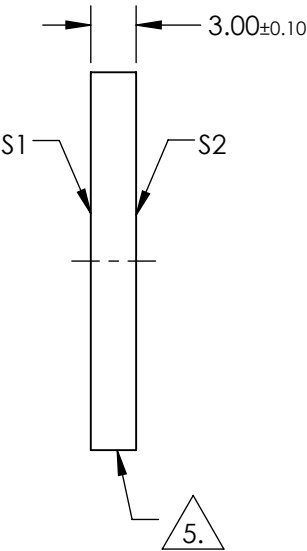
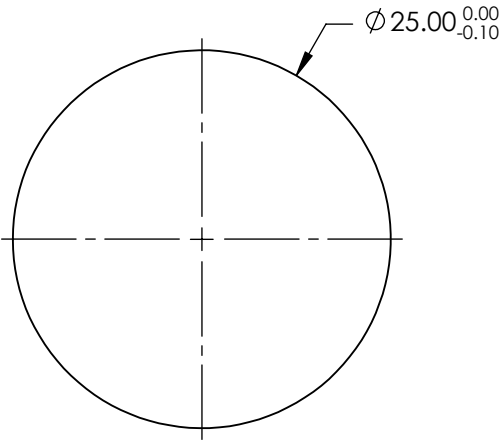
1. SUBSTRATE:
SUPRASIL® 300
2. SURFACE S2 TO BE PARALLEL TO SURFACE S1 TO WITHIN < 5 ARCSEC
3. COATING (APPLY ACROSS COATING APERTURE)

S1 & S2: NIR II
R(ABS) ≤ 1.5% FROM 750-800nm
R(ABS) ≤ 1.0% FROM 800-1550nm
R(AVG) ≤ 0.7% FROM 750-1550nm

4. TRANSMITTED WAVEFRONT DISTORTION P-V: ≤ 0.10 WAVE @ 632.8nm


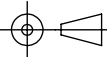
△ 5. FINE GRIND SURFACE

6. ROHS COMPLIANT



FOR INFORMATION ONLY:
DO NOT MANUFACTURE
PARTS TO THIS DRAWING

SPECIFICATIONS SUBJECT TO CHANGE WITHOUT NOTICE
DIMENSIONS ARE FOR REFERENCE ONLY

		S1	S2	 Edmund Optics®		
SHAPE		PLANO	PLANO		TITLE	25mm DIA., 3mm THICK, NIR II COATED, SUPRASIL WINDOW
SURFACE QUALITY		10-5	10-5			
WAVELENGTH RANGE		750 - 1550nm	750 - 1550nm			
BEVEL		PROTECTIVE AS NEEDED	PROTECTIVE AS NEEDED	ALL DIMS IN	mm	DWG NO 25592
						SHEET 1 OF 1