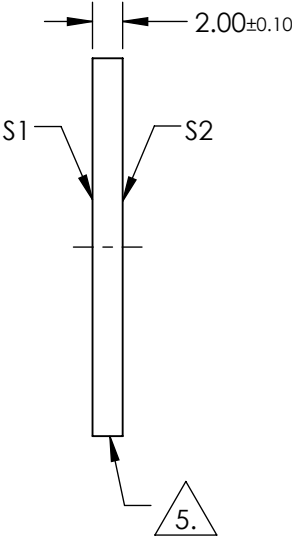
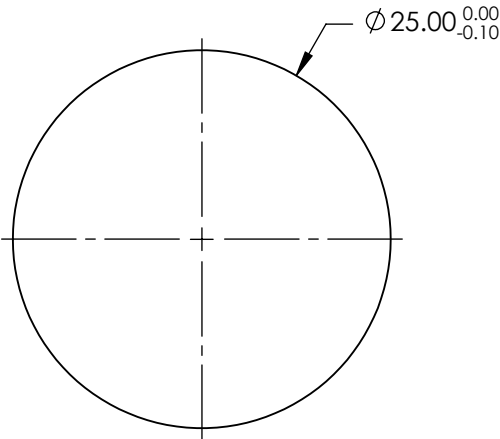


NOTES:

1. SUBSTRATE:  
SUPRASIL® 300
2. SURFACE S2 TO BE PARALLEL TO SURFACE S1 TO WITHIN < 5 ARCSEC
3. COATING (APPLY ACROSS COATING APERTURE)  
S1 & S2: NIR II  
R(ABS) ≤ 1.5% FROM 750-800nm  
R(ABS) ≤ 1.0% FROM 800-1550nm  
R(AVG) ≤ 0.7% FROM 750-1550nm
4. TRANSMITTED WAVEFRONT DISTORTION P-V: ≤ 0.10 WAVE @ 632.8nm

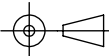

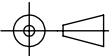
△ 5. FINE GRIND SURFACE

6. ROHS COMPLIANT



**FOR INFORMATION ONLY:**  
**DO NOT MANUFACTURE**  
**PARTS TO THIS DRAWING**

SPECIFICATIONS SUBJECT TO CHANGE WITHOUT NOTICE  
DIMENSIONS ARE FOR REFERENCE ONLY

	S1	S2			 Edmund Optics®			
SHAPE	PLANO	PLANO			TITLE	25mm Dia., 2mm Thick, NIR II Coated Suprasil Window		
SURFACE QUALITY	10-5	10-5	THIRD ANGLE PROJECTION			DWG NO	25591	SHEET 1 OF 1
WAVELENGTH RANGE	750 - 1550nm	750 - 1550nm						
BEVEL	PROTECTIVE AS NEEDED	PROTECTIVE AS NEEDED						
				ALL DIMS IN	mm			