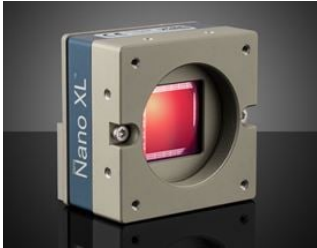


[All Products](#) / [Cameras](#) / [Gigabit Ethernet Cameras](#)

Teledyne DALSA Genie™ Nano 10GigE Cameras See More by [Teledyne DALSA](#)



- Up to 67.10 MP Resolution with Framrates up to 18.50FPS
- Supports Trigger-to-Image Reliability (T2IR) Framework
- Compact (44 x 59 x 59mm), M42-Mount, Lightweight, and Robust All Metal Design



Teledyne
Authorized
Distributor

Common Specifications

| | | | |
|------------------------------------|----------------------------------------------------------|-----------------------------|--------------------------------------------------|
| General | | | |
| Manufacturer: | Teledyne DALSA | Camera Series: | Genie Nano-10GigE |
| Physical & Mechanical Properties | | | |
| Dimensions (mm): | 59 x 59 x 41 (excludes connectors and lens mount) | Weight (g): | 183 |
| Housing: | Full | | |
| Sensor | | | |
| Pixel Size, H x V (µm): | 2.50 x 2.50 | | |
| Type of Sensor: | Progressive Scan CMOS | Shutter Type: | Global |
| Pixel Depth: | 8/10 bit | Exposure Time: | Automatic, Programmable, or via External Trigger |
| Dynamic Range (dB): | 62.00 | Machine Vision Standard: | GigE Vision v2.0 |
| Electrical | | | |
| Power Consumption (W): | 12.5 | | |
| Hardware & Interface Connectivity | | | |
| Interface: | 10GigE (PoE) | | |
| Connector: | 5GigE, RJ45 with Screw Locks | GPIOs: | 2 opto-isolated input, 3 opto-isolated output |
| Synchronization: | Hardware Trigger (GPIO) or Software Trigger | Interface Port Orientation: | Back Panel |
| GPIO Connector Type: | 6-pin Hirose (HR10) | | |
| Threading & Mounting | | | |
| Mount: | M42-Mount | | |
| Mounting Threads: | 1/4-20 with Tripod Mount Adapter #34-966 | | |
| Environmental & Durability Factors | | | |
| Operating Temperature (°C): | -20 to +60 | | |
| Storage Temperature (°C): | -30 to +60 | | |

Technical Information

Products

| Type | Model Number | Sensor Format | Resolution (Megapixels) | Connector | Mount | Stock Number | Price | Buy |
|-------------------|---------------|---------------|-------------------------|------------------------------|-----------|-------------------------|-----------|------------|
| Color Camera | G6-GC31-C6205 | 1.4" | 37.70 | 5GigE, RJ45 with Screw Locks | M42-Mount | #28-677 | €5.880,00 | 1 In Stock |
| Monochrome Camera | G6-GM31-M6205 | 1.4" | 37.70 | 5GigE, RJ45 with Screw Locks | M42-Mount | #28-678 | €5.670,00 | 1 In Stock |
| Color Camera | G6-GC31-C8205 | APS-C | 67.10 | 5GigE, RJ45 with Screw Locks | M42-Mount | #28-679 | €7.030,00 | Contact Us |



Recertified

Stock No.: 28-679-RCD-05P
Recertified Code: 05P (All Original
Parts Included, Perfect)

Recertified Products

*Typically 1-2 Recertified Products are
in stock at a time. Please contact our
sales team if you would like exact
availability of an item.*

Recertified products are those
identified with the recertified logo
indicating they were returned to
Edmund Optics® and cannot be sold
as new for the following reasons:

- Open Box – Missing original packaging
- Cosmetic Blemishes – Scratches, rub marks or other minor cosmetic imperfections
- Service/Repair – Product has been serviced to the factory original specification
- Factory Returns – Product has been returned in its original condition

Recertified products are inspected for damage and any necessary repairs are made. Products are then certified by Edmund Optics® to be in good working order. Since quantity is low, recertified products are sold on a first come, first serve basis. Any imperfections will be listed in the description, indicated in the stock number, and categorized by the table below. When purchasing recertified products, the Edmund Optics® standard [return policy](#) applies.

View all our [recertified products](#) in the Web Specials section of our website.

| Parts | | Cosmetic | |
|-------|------------------------------------|----------|------------------------|
| 05 | All Original Parts Included | P | Perfect |
| | | | |
| 04 | Missing Manual | N | Minor Defect/Scratches |
| 03 | Missing Manual and Small Accessory | J | Major Defect/Scratches |
| 02 | Missing Manual and Large Accessory | | |



Copyright 2023 | Edmund Optics, Ltd Unit 1, Opus Avenue, Nether Poppleton, York, YO26 6BL, UK
Phone: 1-800-363-1992 :
www.edmundoptics.com

Color
Camera

G6-
GC31-
C8205

APS-C

67.10

5GigE,
RJ45 with
Screw
Locks

M42-
Mount

€5.356,00

1 In Stock