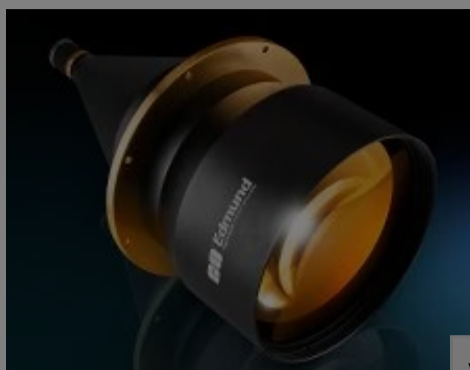


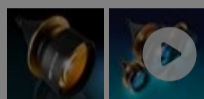
[All Products](#) / [Imaging Lenses](#) / [TitanTL® Series](#)

[See all 29 Products in Family](#)

TECHSPEC® 0.066X



TitanTL® Telecentric Lens



Please select your shipping country to view the most accurate inventory information, and to determine the correct Edmund Optics sales office for your order.

Select Your Country/Region: European Union

Submit

1

€10.290^{,00}

ADD TO CART

Volume Pricing

Qty 1+ €10.290,00 each

Need More? [Request Quote](#)

Prices shown are exclusive of VAT/local taxes

Product Downloads

- STEP:step
- PDF Drawing:pdf
- IGES:igs
- Zemax
- eDrawing:eprt
- EO Spec Sheet

General

Product Family: TitanTL® Series

Stock No. of Mounting Clamp: #28-642 (Sold Separately)

Type: Telecentric Lens

Physical & Mechanical Properties

Iris Option: Variable

Length (mm): 536.30

Maximum Diameter (mm): 266

Weight (kg): 9.94

Rear Filter Diameter (mm): 25.4

Optical Properties

Horizontal Field of View, 1" Sensor: 193.8mm

Horizontal Field of View, 2/3" Sensor: 133.2mm

Horizontal Field of View, 1/1.8" Sensor: 109.0mm

Horizontal Field of View, 1/2" Sensor: 96.9mm

Maximum Image Circle (mm): 16.00

Numerical Aperture NA, Object Side: 0.0030

Resolution, Image Space: 50 lp/mm @ 40% (MTF, open)

Number of Elements (Groups): 6 (4)

Primary Magnification PMAG: 0.066X

Telecentric Lens Magnification: 0.07

Working Distance (mm): 377

FOV @ Max Sensor Format, H x V (mm): 193.9 x 145.4

Aperture (f/#): f/11 - f/22

Coating: λ/4 MgF₂

Depth of Field (mm):	±130.9mm (20% @ 20 lp/mm, open)	Magnification:	0.066X
Typical Distortion @ 520nm (%):	<0.05	Typical Distortion @ 520nm (%):	<0.1
Lens Wavelength Range:	VIS		

Please select your shipping country to view the most accurate inventory information, and to determine the correct Edmund Optics sales office for your order.

Select Your Country/Region:

Sensor			
Maximum Sensor Format:	1"	Pixel Size (µm):	2.74

Threading & Mounting			
Filter Thread:	N/A	Mount:	C-Mount

Regulatory Compliance			
Certificate of Conformance:	View		

Product Details

- Large Field of View Telecentric Lens
- Up to 31.4 MegaPixels, 3.45µm Pixel Size Sensors
- Full Frame (35mm), C-Mount, T-Mount, M58-Mount, F-Mount Telecentric Lens
- Magnification from 0.037X to 0.377X

TECHSPEC® TitanTL® Telecentric Lenses are designed for machine vision systems and metrology applications that require a large field of view. These lenses feature large maximum sensor formats, a variety of working distance and magnification options, and a rear filter holder on the back of the lenses to allow for easy filter integration. On our 118mm, 182mm and 242mm FOV versions, the integrated mounting flange allows for ease of securing each lens without requiring an additional mount and provides an easy to locate reference plane. TECHSPEC® TitanTL® Telecentric Lenses contain shims that provide adjustment for variation in camera sensor location, an adjustable iris and a 3 set screw lens mount for simple rotational alignment to the camera. Typical applications include automotive and electronic inspection, measurement and gauging applications.

These lenses won the [Silver Level 2017 Innovators Award](#).

Note: Detailed inspection reports included with each lens.

Technical Information

[#34-013, 0.066X, 1" C-Mount TitanTL® Telecentric Lens, Distortion Plot](#)

[#34-013, 0.066X, 1" C-Mount TitanTL® Telecentric Lens, Relative Illumination Plot](#)

[#34-013, 0.066X, 1" C-Mount TitanTL® Telecentric Lens, Telecentricity Plot](#)

[#34-013, 0.066X, 1" C-Mount TitanTL® Telecentric Lens, Modulated Transfer Function \(MTF\) Plot, 377mm Working Distance, f11](#)

[#34-013, 0.066X, 1" C-Mount TitanTL® Telecentric Lens, Depth of Field Plot, 377mm Working Distance, f11](#)

[#34-013, 0.066X, 1" C-Mount TitanTL® Telecentric Lens, Modulated Transfer Function \(MTF\) Plot, 377mm Working Distance, f16](#)

[#34-013, 0.066X, 1" C-Mount TitanTL® Telecentric Lens, Depth of Field Plot, 377mm Working Distance, f16](#)

Accessories

Note: Compatible accessories for individual stock numbers may vary. If unsure about which accessories work with your products, please contact us [here](#).

	Title	Compare	Stock Number	Price	Buy
--	-------	---------	--------------	-------	-----

MORE+

Mounting Clamp, 79mm Inner Diameter

#56-026

€251,00
Request Quote

13 In Stock

1



	Title	Compare	Stock Number	Price	Buy
MORE+	Mounting Clamp, 180mm Bolt Circle Diameter		#28-640	€950,00	8 In Stock <input type="text" value="1"/>
MORE+	Mounting Clamp, 240mm Diameter				6 In Stock <input type="text" value="1"/>
MORE+	Mounting Clamp, 280mm Diameter				12 In Stock <input type="text" value="1"/>

Please select your shipping country to view the most accurate inventory information, and to determine the correct Edmund Optics sales office for your order.

Select Your Country/Region:

Related Products



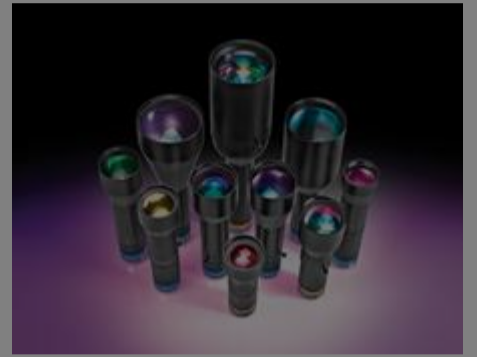
Telecentric Backlight Illuminators



PlatinumTL™ Telecentric Lenses



GoldTL™ Telecentric Lenses



SilverTL™ Telecentric Lenses

Resources

Media Type

- Application Note
- Video
- FAQ
- Glossary
- Published Article
- Technical Tool

APPLICATION NOTE
Anti-Reflection (AR) Coatings

APPLICATION NOTE
An Introduction to Optical Coatings

VIDEO
Wavelength and f#

APPLICATION NOTE
Understanding Focal Length and Field of View

APPLICATION NOTE
Introduction to Modulation Transfer Function

VIDEO
Edmund Optics Imaging: Telecentric...

[View More](#)

Please select your shipping country to view the most accurate inventory information, and to determine the correct Edmund Optics sales office for your order.

Select Your Country/Region: