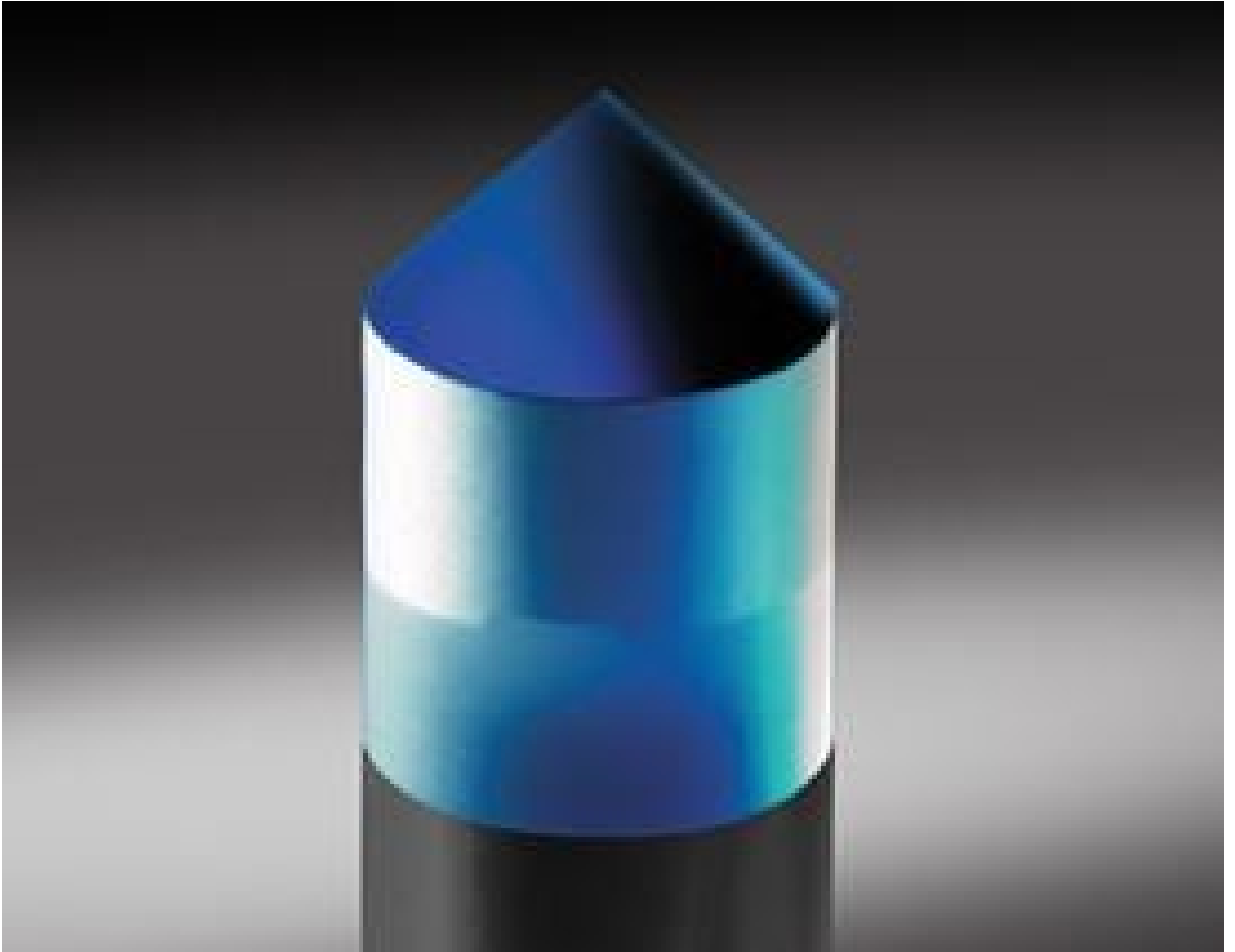


[See all 1 Products in Family](#)

**TECHSPEC® 10mm Diameter, Aluminum Coated, Cone Mirror**



Stock #45-939 **20+ In Stock**

- 1 + €432.<sup>00</sup>

**ADD TO CART**

Volume Pricing	
Qty 1-5	€432,00 each
Qty 6-25	€346,00 each
Qty 26-49	€324,00 each
Need More?	<a href="#">Request Quote</a>

ⓘ Prices shown are exclusive of VAT/local taxes

Product Downloads

**General**

Specialty Mirror **Type:**

Coating on Cone Surface **Note:**

**Physical & Mechanical Properties**

10.00 +0.00/-0.05 **Diameter (mm):**

10.00	<b>Length (mm):</b>
±0.1	<b>Length Tolerance (mm):</b>
15.0	<b>Total Length (mm):</b>

## Optical Properties

±6	<b>Angle Tolerance (arcmin):</b>
Protected Aluminum (400-700nm)	<b>Coating:</b>
R <sub>avg</sub> >85% @400 - 700nm	<b>Coating Specification:</b>
Metal	<b>Coating Type:</b>
N-BK7	<b>Substrate:</b> <input type="checkbox"/>
40-20	<b>Surface Quality:</b>
400 - 700	<b>Wavelength Range (nm):</b>

## Regulatory Compliance

<a href="#">Compliant</a>	<b>RoHS 2015:</b>
<a href="#">Compliant</a>	<b>Reach 219:</b>
<a href="#">View</a>	<b>Certificate of Conformance:</b>

## Product Details

- Ideal for 360° Applications
- ±6 Arcmin Apex Angle Tolerance
- Protected Aluminum Coating

TECHSPEC® Cone Mirrors are ideal for laser and imaging systems, and for applications requiring 360° illumination. The mirrors feature a ±6 arcmin apex angle tolerance. The cone mirrors have a polished cone top and base, and a fine ground circumference. TECHSPEC® Cone Mirrors are coated in protected aluminum (400-700nm). These mirrors have a 10mm diameter.

## Technical Information

