

[All Products](#) / [Optics](#) / [Optical Lenses](#) / [Imaging Grade Cylinder Lenses](#)

[See all 44 Products in Family](#)

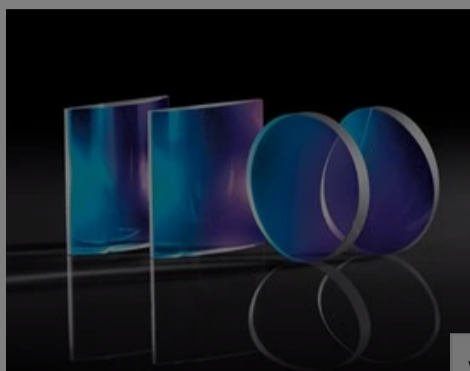
**TECHSPEC®**

# 12.7 x 12.7mm x 2.00mm Cylinder Lens

Please select your shipping country to view the most accurate inventory information, and to determine the correct Edmund Optics sales office for your order.

Select Your Country/Region: European Union

Submit



Stock #35-010 **13 In Stock**

1

€100<sup>,00</sup>

ADD TO CART



Volume Pricing	
Qty 1-5	€100,00 each
Qty 6-25	€90,00 each
Qty 26-49	€85,00 each
Need More?	<a href="#">Request Quote</a>

Prices shown are exclusive of VAT/local taxes

### Product Downloads

- STEP:step
- Curve:pdf
- PDF Drawing:pdf
- IGES:igs
- Curve (xlsx):xlsx
- Zemax:zar
- Zemax:zmx
- eDrawing:eprt
- Code V:seq
- EO Spec Sheet
- [Download All](#)

## General

**Type:** Cylinder Lens, Plano-Convex

## Physical & Mechanical Properties

**Bevel:** Protective as needed

**Center Thickness CT (mm):** 2.00

**Center Thickness Tolerance (mm):** ±0.1

**Clear Aperture CA (mm):** 11.43 x 11.43

**Dimensional Tolerance (mm):** +0.0/-0.025

**Dimensions (mm):** 12.7 x 12.7

**Edge Thickness ET (mm):** 1.21

**Axial Twist (arcmin):** <3

## Optical Properties

**Effective Focal Length EFL (mm):** 50.00

**Substrate:** [N-BK7](#)

**f/#:** 8.00

**Numerical Aperture NA:** 0.13

**Coating:** NIR II (750-1550nm)

**Wavelength Range (nm):** 750 - 1550

**Back Focal Length BFL (mm):** 48.68

**Coating Specification:**  
R<sub>abs</sub> ≤1.5% @ 750 - 800nm  
R<sub>abs</sub> ≤1.0% @ 800 - 1550nm

R<sub>avg</sub> ≤0.7% @  
750 - 1550nm

Radius R<sub>1</sub>  
(mm): 25.84

Surface  
Quality: 40-20

Power (P-V) @  
632.8nm: 1.5λ

Please select your shipping country to view the most accurate inventory information, and to determine the correct Edmund Optics sales office for your order.

Select Your Country/Region:

Plano Axis  
Wedge  
(arcmin): <5

(arcmin):

## Regulatory Compliance

RoHS 2015: **Compliant**

Certificate of  
Conformance: **View**

Reach 235: **Compliant**

## Need different specs or modifications?

Edmund Optics offers comprehensive custom manufacturing services for optical and imaging components tailored to your specific application requirements. Whether in the prototyping phase or preparing for full-scale production, we provide flexible solutions to meet your needs. Our experienced engineers are here to assist—from concept to completion.

Our capabilities include:

- Custom dimensions, materials, coatings, and more
- High-precision surface quality and flatness
- Tight tolerances and complex geometries
- Scalable production—from prototype to volume

Learn more about our [custom manufacturing capabilities](#) or submit an inquiry [here](#).

## Product Details

- Ideal for Beam Shaping Applications
- Tightly Controlled Optical and Geometric Tolerances
- Rectangular and Circular Form Factors Available

TECHSPEC® Imaging Grade PCX Cylinder Lenses offer an ideal pairing of tightly controlled tolerances and scalable pricing for volume integration. As opposed to spherical lenses, which focus light in two dimensions, cylinder lenses are used to focus light in one dimension. AR Coating options are available for laser applications, minimizing stray light and maximizing throughput of a system. Our TECHSPEC Imaging Grade PCX Cylinder Lenses are specified to control geometric characteristics in order to ensure consistent performance from design to manufacturing. Typical applications include circularizing elliptical beams from a laser diode, creating a light sheet for measurement systems, or projecting a laser line onto a surface.

**Note:** For negative focal length cylinder lenses, see our [TECHSPEC Imaging Grade PCV Cylinder Lenses](#).

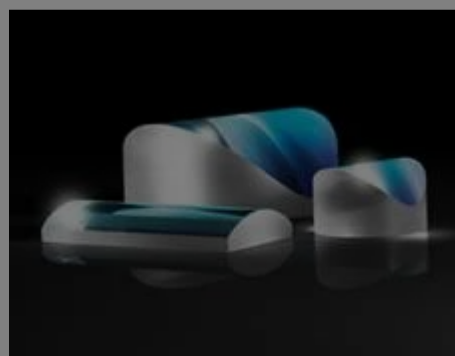
**LASER OPTICS** MADE BY EDMUND OPTICS®

**LEARN MORE**

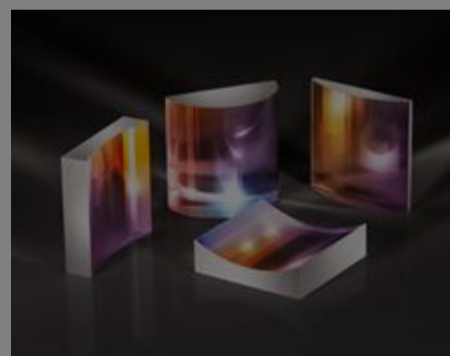
## Related Products



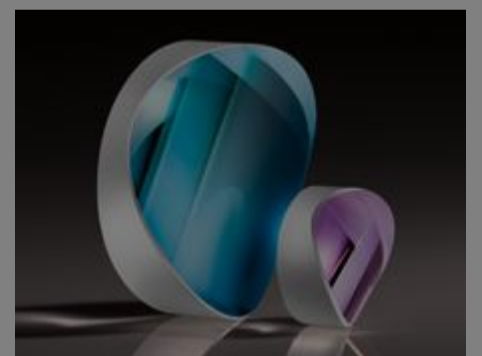
Imaging Grade PCV  
Cylinder Lenses



Illumination Grade PCX  
Cylinder Lenses

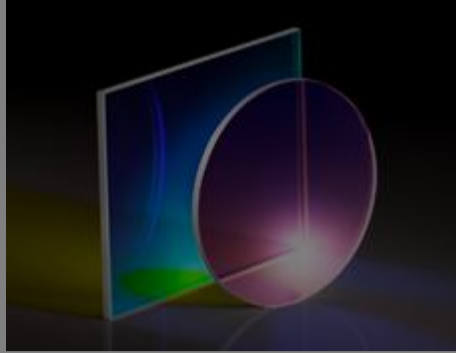


Laser Grade Broadband  
Cylinder Lenses



Acyylinder Lenses

## Frequently Purchased Together



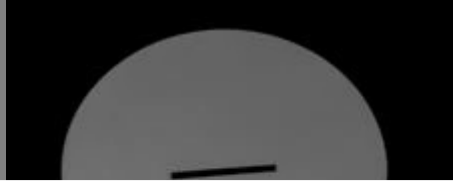
#69-185 - 850nm, 12.5mm Diameter, Dichroic Shortpass Filter  
€140,00

Qty



€210,00

Qty



€146,00

Qty



#58-544 - 100µm x 3mm, Mounted, Precision Air Slit  
€158,00

Qty

Please select your shipping country to view the most accurate inventory information, and to determine the correct Edmund Optics sales office for your order.

**Select Your Country/Region:**

# Resources

## Media Type

- Application Note
- Trending in Optics
- Published Article
- FAQ
- Glossary
- Video

APPLICATION NOTE

Anti-Reflection (AR) Coatings

APPLICATION NOTE

Laser Beam Shaping Overview

TRENDING IN OPTICS

Non-Circular Optics for System Miniaturization

APPLICATION NOTE

What are Cylinder Lenses?

APPLICATION NOTE

Considerations When Using Cylinder Lenses

PUBLISHED ARTICLE

Cylinder Lenses for Beam Shaping

[View More](#)