

[All Products](#) / [Optics](#) / [Optical Mirrors](#) / [Uncoated Concave Laser Mirrors](#)

[See all 32 Products in Family](#)

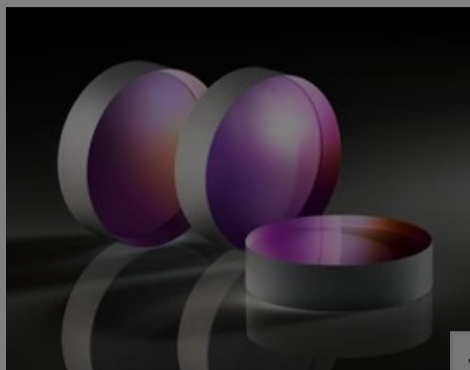
**TECHSPEC®**

12.7mm Dia. x 25mm

Please select your shipping country to view the most accurate inventory information, and to determine the correct Edmund Optics sales office for your order.

Select Your Country/Region: European Union

Submit



Stock #27-583 **NEW** 1 In Stock

1

€108<sup>.00</sup>

ADD TO CART

TECHSPEC Uncoated Concave Mirrors

Volume Pricing	
Qty 1-5	€108,00 each
Qty 6-25	€102,00 each
Qty 26+	€98,50 each
Need More?	<a href="#">Request Quote</a>

Prices shown are exclusive of VAT/local taxes

Product Downloads

- STEP:step
- PDF Drawing:pdf
- IGES:igs
- eDrawing:eprt
- EO Spec Sheet
- [Download All](#)

General

Type: Concave Mirror

Physical & Mechanical Properties

Diameter (mm): 12.70 +0.00/-0.12

Back Surface: Commercial Polish

Center Thickness CT (mm): 5.18

Clear Aperture (%): 90

Edge Thickness ET (mm): 6.00 ±0.2

Optical Properties

Coating: Uncoated

Effective Focal Length EFL (mm): 12.50

Substrate: **Fused Silica** (Corning 7980)

Radius R<sub>1</sub> (mm): 25.00

Surface Quality: 20-10

Irregularity (P-V) @ 632.8nm: λ/10

Radius of Curvature (mm): 25.00

Regulatory Compliance

RoHS 2015: **Compliant**

Certificate of Conformance: [View](#)

## Need different specifications?

Edmund Optics offers comprehensive custom manufacturing capabilities to meet your specific requirements. Whether in the prototyping phase or full production, our experienced engineers are here to assist—from concept to completion.

Our capabilities include:

- Custom dimensions, materials, coatings, and more
- High-precision surface quality and flatness
- Tight tolerances and complex geometries
- Scalable production—from prototype to volume

Learn more about our [custom manufacturing capabilities](#) or submit an inquiry [here](#).

Please select your shipping country to view the most accurate inventory information, and to determine the correct Edmund Optics sales office for your order.

### Select Your Country/Region:

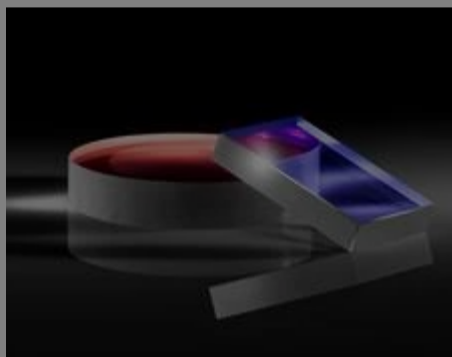
Application  
s. Our experienced

## Product Details

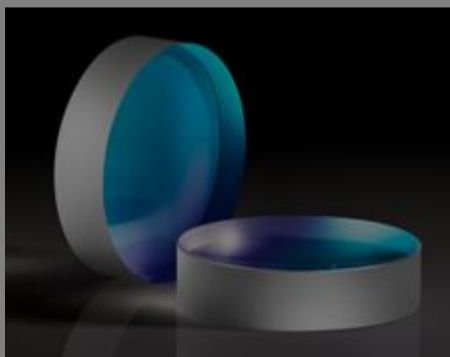
- High Precision Fused Silica Mirror Substrates
- Large Selection of Diameters and Focal Lengths
- Custom Coating Options Available

TECHSPEC® Uncoated Concave Laser Mirrors offer high precision 20-10 surface quality ideal for laser beam focusing applications. Featuring fused silica substrates, these concave mirrors are resistant to thermal shock and are available in focal lengths from 25mm to 500mm. TECHSPEC Uncoated Concave Laser Mirrors are ideal for applications in environments with temperature fluctuations. Custom coating options including protected metal coatings and dielectric mirror coatings are available.

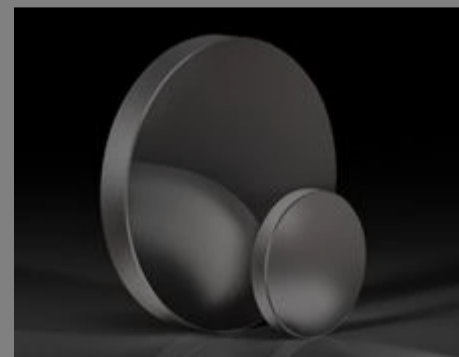
## Related Products



Laser Mirror Substrates



Concave Laser Line Mirrors



Ultrafast-Enhanced Silver Concave Laser Mirrors

## Resources

### Media Type

- Application Note
- Technical Tool
- Trending in Optics
- Video
- Published Article
- FAQ
- Glossary
- Scientific Paper

#### APPLICATION NOTE

An Introduction to Optical Coatings

#### TECHNICAL TOOL

Gaussian Beams Calculator

#### APPLICATION NOTE

Effects of Laser Mirror Surface Flatness

#### TRENDING IN OPTICS

High Reflectivity Mirrors for Laser...

#### WEBINARS

High Reflectivity Mirrors for Laser...

#### APPLICATION NOTE

Highly Reflective Coatings

[View More](#)

Please select your shipping country to view the most accurate inventory information, and to determine the correct Edmund Optics sales office for your order.

**Select Your Country/Region:**