

[All Products](#) / [Optics](#) / [Optical Lenses](#) / [Molded Aspheric Condenser Lenses](#)

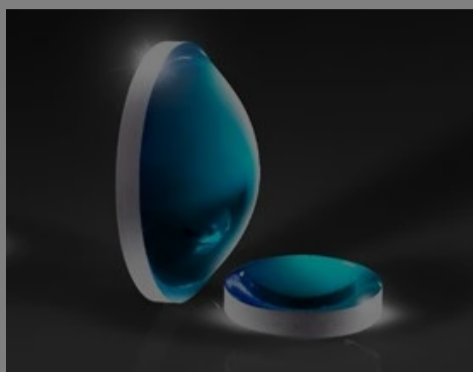
[See all 88 Products in Family](#)

12mm Dia. x 7.5mm Thick Molded Aspheric Condenser Lens

Please select your shipping country to view the most accurate inventory information, and to determine the correct Edmund Optics sales office for your order.

Select Your Country/Region: European Union

[Submit](#)



Molded Aspheric Condenser Lenses

Stock #71-486 **6 In Stock** [Other Coating Options](#)

- 1 +

€62^{,50}

[ADD TO CART](#)

Product Downloads

[EO Spec Sheet](#)

Volume Pricing	
Qty 1-10	€62,50 each
Qty 11-49	€56,00 each
Need More?	Request Quote

Prices shown are exclusive of VAT/local taxes

General

Type: Condenser Lens

Note: [Click here](#) for more information on the ISO 10110 surface quality specification.

Physical & Mechanical Properties

Diameter (mm):	12.00 +0.0/-0.3	Centering (arcmin):	≤30
Clear Aperture CA (mm):	9.50	Edge Thickness ET (mm):	1.85
Center Thickness CT (mm):	5.50 ±0.20	Bevel:	Protective as needed
Diameter of Asphere (mm):	12.0	Shape of Back Surface:	Convex

Optical Properties

Effective Focal Length EFL (mm):	7.50 @ 587.6nm	Numerical Aperture NA:	0.80
Back Focal Length BFL (mm):	4.60	Substrate:	Liba2000+
Focal Length Tolerance (%):	±5	Coating:	VIS-EXT (350-700nm)
Coating Specification:	R _{avg} ≤0.4% @ 425 - 675nm	Surface Quality:	5/3 x 0.4; E 0.2

f/#: 0.63	Radius R₂ (mm): 12.7
Wavelength Range (nm): 350 - 700	Conjugate Distance: Infinite
<p>Please select your shipping country to view the most accurate inventory information, and to determine the correct Edmund Optics sales office for your order.</p> <p>Select Your Country/Region:</p>	
Regulatory Compliance	
RoHS 2015:	Compliant
Reach 242:	Compliant

Product Details

- Hardened for Improved Durability
- High Numerical Apertures
- Ideal for Illumination Applications

Molded Aspheric Condenser Lenses are pressed, hardened, and annealed to meet precise optical and mechanical specifications. The hardening process improves the durability of the lenses, making them less susceptible to thermal shock and scratching than traditionally polished lenses. These Molded Aspheric Condenser Lenses are ground and polished on the second surface, enhancing the overall precision of the lenses. Molded Aspheric Condenser lenses are ideal for a wide range of illumination and detection applications, including biotech instruments such as DNA sequencers and polymerase chain reaction (PCR) testing platforms.

Technical Information

Resources

Media Type

- Application Note
- Scientific Paper
- Trending in Optics
- Video
- Published Article
- FAQ
- Glossary

APPLICATION NOTE

Anti-Reflection (AR) Coatings

APPLICATION NOTE

An Introduction to Optical Coatings

CASE STUDIES

Laser Optics for Eye Surgery

APPLICATION NOTE

Lens Geometry Performance Comparison

APPLICATION NOTE

All About Aspheric Lenses

WEBINARS

Design Considerations for Custom Aspheres

[View More](#)

Please select your shipping country to view the most accurate inventory information, and to determine the correct Edmund Optics sales office for your order.

Select Your Country/Region: