

[All Products](#) / [Optics](#) / [Optical Lenses](#) / [Molded Aspheric Condenser Lenses](#)

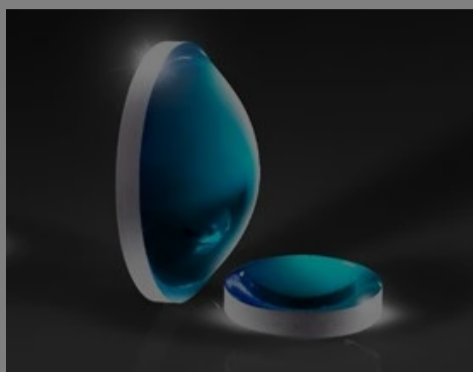
[See all 88 Products in Family](#)

13mm Dia. x 7.7mm Focal Length Molded Aspheric Condenser Lens

Please select your shipping country to view the most accurate inventory information, and to determine the correct Edmund Optics sales office for your order.

Select Your Country/Region: European Union

Submit



Molded Aspheric Condenser Lenses

Stock #15-886 **1 In Stock** [Other Coating Options](#)

1

€62^{,50}

ADD TO CART

Volume Pricing	
Qty 1-10	€62,50 each
Qty 11-49	€55,00 each
Need More?	Request Quote

Prices shown are exclusive of VAT/local taxes

Product Downloads

- STEP:step
- Curve:pdf
- PDF Drawing:pdf
- IGES:igs
- Curve (xlsx)
- Zemax:zar
- eDrawing:eprt
- Code V:seq
- EO Spec Sheet
- [Download All](#)

General

Type: Condenser Lens

Note: [Click here](#) for more information on the ISO 10110 surface quality specification.

Physical & Mechanical Properties

Diameter (mm):	13.00 +/-0.3	Centering (arcmin):	≤25
Clear Aperture CA (mm):	10.40	Edge Thickness ET (mm):	0.1
Center Thickness CT (mm):	6.30 ±0.20	Bevel:	Protective as needed
Diameter of Asphere (mm):	13.0	Shape of Back Surface:	Convex

Optical Properties

Effective Focal Length EFL (mm):	7.70 @ 587.6nm	Numerical Aperture NA:	0.85
Back Focal Length BFL (mm):	4.00	Substrate: Liba2000+	
Focal Length Tolerance (%):	±7	Coating:	NIR I (600-1050nm)
Coating Specification:	R _{avg} ≤0.5% @ 600 - 1050nm	Surface Quality:	5/3 x 0.4; E 0.2

f/#:	0.59	Abbe Number (v_d):	58.85
Index of Refraction (n_d):	1.520	Radius R₂ (mm):	16.1
Wavelength Range (nm):	600 - 1050		
Focal Length Specification Wavelength (nm):	587.6		

Please select your shipping country to view the most accurate inventory information, and to determine the correct Edmund Optics sales office for your order.

Select Your Country/Region:

Material Properties

Coefficient of Thermal Expansion CTE (10⁻⁶/°C):	9.4
---	-----

Regulatory Compliance

RoHS 2015:	Compliant	Certificate of Conformance:	View
Reach 242:	Compliant		

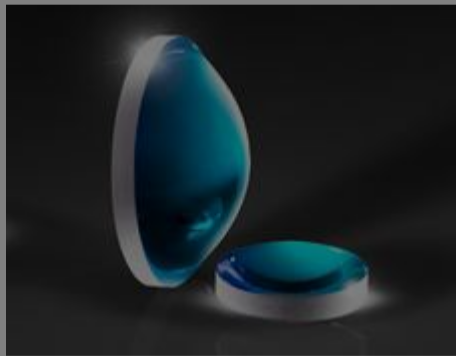
Product Details

- Hardened for Improved Durability
- High Numerical Apertures
- Ideal for Illumination Applications

Molded Aspheric Condenser Lenses are pressed, hardened, and annealed to meet precise optical and mechanical specifications. The hardening process improves the durability of the lenses, making them less susceptible to thermal shock and scratching than traditionally polished lenses. These Molded Aspheric Condenser Lenses are ground and polished on the second surface, enhancing the overall precision of the lenses. Molded Aspheric Condenser lenses are ideal for a wide range of illumination and detection applications, including biotech instruments such as DNA sequencers and polymerase chain reaction (PCR) testing platforms.

Technical Information

Frequently Purchased Together



#35-048 - 18mm Dia. x 8.4mm FL, MgF₂ Molded Aspheric Condenser Lens
€47,75

Qty



#45-717 - 50.0mm Dia. x 100.0mm FL, VIS-NIR Coated, Plano-Convex Lens
€78,00

Qty



#37-382 - 6mm FL f/2.5, Rugged Blue Series M12 Lens
€101,00

Qty



#37-383 - 6mm FL f/4.0, Rugged Blue Series M12 Lens
€101,00

Qty

Resources

Media Type

- Application Note
- Scientific Paper
- Trending in Optics
- Video
- Published Article
- FAQ
- Glossary

APPLICATION NOTE

Anti-Reflection

APPLICATION NOTE

Ap

CASE STUDIES

Laser Optics
for Eye
Surgery

Please select your shipping country to view the most accurate inventory information, and to determine the correct Edmund Optics sales office for your order.

Select Your Country/Region:

APPLICATION NOTE

Lens Geometry
Performance
Comparison

APPLICATION NOTE

All About
Aspheric
Lenses

WEBINARS

Design
Considerations
for Custom
Aspheres

[View More](#)