

[All Products](#) / [Optics](#) / [Optical Lenses](#) / [Condenser Lenses](#)

[See all 102 Products in Family](#)

# 16mm Dia. x 8.3



Please select your shipping country to view the most accurate inventory information, and to determine the correct Edmund Optics sales office for your order.

Select Your Country/Region: European Union

Submit

### Options

1

€53<sup>,50</sup>

ADD TO CART

Volume Pricing	
Qty 1-10	€53,50 each
Qty 11-49	€49,00 each
Need More?	<a href="#">Request Quote</a>

Prices shown are exclusive of VAT/local taxes

### Product Downloads

- STEP:step
- PDF Drawing:pdf
- IGES:igs
- eDrawing:eprt
- Code V:seq
- EO Spec Sheet
- [Download All](#)

## General

Type: Condenser Lens

## Physical & Mechanical Properties

Diameter (mm):	16.00 +0.0/-0.2	Centering (arcmin):	≤30
Clear Aperture CA (mm):	14.40	Edge Thickness ET (mm):	1.39
Center Thickness CT (mm):	7.00 ±0.30	Bevel:	Protective as needed
Shape of Back Surface:	Convex		

## Optical Properties

Effective Focal Length EFL (mm):	8.30	Numerical Aperture NA:	0.96
Back Focal Length BFL (mm):	5.58	Substrate: ⓘ	H-K9L
Focal Length Tolerance (%):	±8	Coating:	Uncoated
Surface Quality:	80-50 (typical)	f/#:	0.52
Radius R <sub>2</sub> (mm):	-7.20	Conjugate Distance:	Infinite

## Regulatory Compliance

## Product Details

- Molded Illumination Lenses
- Aspheric or Spherical Designs
- High Numerical Apertures

Condenser Lenses are molded lenses designed for illumination applications. Featuring large apertures and short focal lengths, Condenser Lenses are commonly used in emitter-detector applications, projection applications, or condensing illumination applications such as Koehler Illumination. The Aspheric Condenser Lenses are molded on the aspheric surface and ground and polished on the opposite face, offering superior performance. The Plano-Convex (PCX) Condenser Lenses are molded on both surfaces, offering excellent value.

Please select your shipping country to view the most accurate inventory information, and to determine the correct Edmund Optics sales office for your order.

**Select Your Country/Region:**

## Technical Information

### Related Products



Bar-Type Holders



C, S, and T-Mount Circular  
Optic Mounts

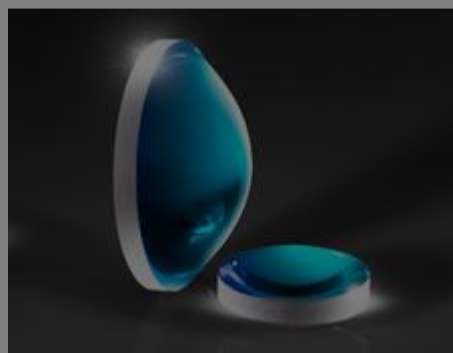


Prematex® Cleaning/Wiping  
Cloths



Uncoated Plano-Convex  
(PCX) Lenses

### Frequently Purchased Together



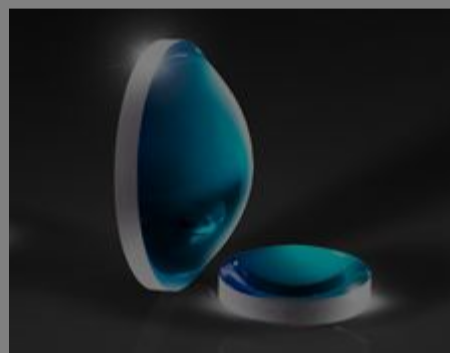
#34-460 - 18mm Dia. x 8.4mm FL,  
Uncoated Molded Aspheric  
Condenser Lens  
€35,50

Qty



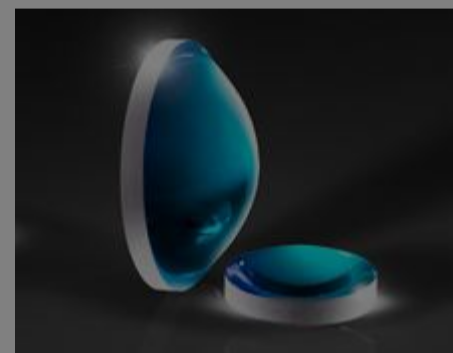
#03-632 - 1.0mm Thick, C-Mount  
Brass Spacer Ring  
€11,25

Qty



#34-458 - 13mm Dia. x 7.7mm FL,  
Uncoated Molded Aspheric  
Condenser Lens  
€35,50

Qty



#34-459 - 16mm Dia. x 10.8mm FL,  
Uncoated Molded Aspheric  
Condenser Lens  
€35,50

Qty

## Resources

### Media Type

- Application Note
- Scientific Paper

APPLICATION NOTE

Anti-Reflection  
(AR) Coatings

APPLICATION NOTE

An  
Introduction to  
Optical  
Coatings

CASE STUDIES

Laser Optics  
for Eye  
Surgery

- Trending in Optics
- Video
- Published Article
- FAQ
- Glossary

Please select your shipping country to view the most accurate inventory information, and to determine the correct Edmund Optics sales office for your order.

**Select Your Country/Region:**

WEBINARS

Design  
Considerations  
for Custom  
Aspheres

[View More](#)