

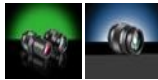
[See all 7 Products in Family](#)

# 1X Mitutoyo Telecentric Objective

See More by [Mitutoyo](#)



3X (#56-985) & 5X (#56-986)



Stock **#56-984** **2 In Stock**

⊖ 1 ⊕ €2.700<sup>00</sup>

**ADD TO CART**

| Volume Pricing |                               |
|----------------|-------------------------------|
| Qty 1+         | €2.700,00 each                |
| Need More?     | <a href="#">Request Quote</a> |

ⓘ Prices shown are exclusive of VAT/local taxes

## Product Downloads

### General

375-036-2 **Model Number:**

Microscope Objective **Type:**

Finite Conjugate **Style:**

Mtutoyo **Manufacturer:**

**Note:**  
Image is formed 280mm from specimen (170mm from the mounting flange)

## Physical & Mechanical Properties

**Length (mm):**  
49.00

**Length excluding Threads (mm):**  
49.00

**Maximum Diameter (mm):**  
30

**Weight (g):**  
80

## Optical Properties

**Horizontal Field of View, 1/2" Sensor:**  
6.40mm

**Horizontal Field of View, 2/3" Sensor:**  
8.80mm

**Focal Length FL (mm):**  
175.08

**Aperture (f/#):**  
NA0.03

**Magnification:**  
1X

**Numerical Aperture NA:**  
0.03

**Resolving Power (µm):**  
9.2

**Depth of Field (µm):**  
306.00

**Field of View, 24 Diameter Field Eyepiece (mm):**  
24

**Field of View, 18 Diameter Field Eyepiece (mm):**  
18

**Working Distance (mm):**  
61

**Wavelength Range (nm):**  
435 - 655

**Parfocal Length (mm):**  
110

**Immersion Liquid:**  
N/A

**Maximum Image Circle (mm):**  
11.00

## Sensor

**Maximum Sensor Format:**  
2/3"

## Threading & Mounting

**Mount:**  
M26 x36 TPI

**Mounting Threads:**  
M26 x36 TPI

## Environmental & Durability Factors

**Operating Temperature (°C):**  
+5 to +40

**Operating Humidity:**  
20 - 80%

## Regulatory Compliance

**RoHS 2015:**  
[Exempt](#)

**Certificate of Conformance:**  
[View](#)

**REACH 241:**  
[Contains SVHC\(s\)](#)

## Product Details

- Long Working Distances Allow for Integration into Machine Vision Measurement Systems
- Compact Design and Long Parfocal Length Simplifies Mounting
- [Tube](#) Available for Use with C-Mount Cameras
- Aluminum Alloy Housing

Mitutoyo Telecentric Objectives are ideal for high-resolution, high power machine vision measurement and optical gauging systems. With powers up to 100X, these objectives can be used for semiconductor production and inspection, and in metrology, quality assurance, and R&D laboratories. These objectives are constructed of an aluminum alloy housing. Mitutoyo Telecentric Objectives have a compact design and a long parfocal length that simplifies mounting. They are easily integrated into C-Mount imaging systems with our Mitutoyo C-Mount Camera Tube [#56-992](#).

Edmund Optics is the main source for Mitutoyo Objectives. Place your orders now for these in demand quality products.

## Technical Information

| Magnification | A   | B    | C    | D    | E    | Stock No.               |
|---------------|-----|------|------|------|------|-------------------------|
| 1X            | 49  | 10   | 16.5 | 31.5 | 31.5 | <a href="#">#56-984</a> |
| 3X            | 33  | 10   | 18   | 25   | 28   | <a href="#">#56-985</a> |
| 5X            | 49  | 10   | 17   | 25   | 28   | <a href="#">#56-986</a> |
| 10X           | 59  | 10   | 14.5 | 30   | 30   | <a href="#">#56-987</a> |
| 20X           | 90  | 14.5 | 23   | 33   | 39   | <a href="#">#87-228</a> |
| 50X           | 97  | 14.7 | 23   | 33   | 39   | <a href="#">#87-229</a> |
| 100X          | 104 | 14.1 | 23   | 33   | 39   | <a href="#">#87-230</a> |

