

[All Products](#) / [Optomechanics](#) / [Precision Pinholes](#)

[See all 96 Products in Family](#)

2 μm Aperture

n Pinhole

Please select your shipping country to view the most accurate inventory information, and to determine the correct Edmund Optics sales office for your order.

Select Your Country/Region: European Union

Submit

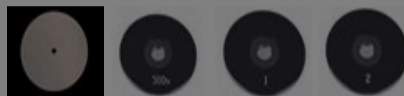


1

€164⁰⁰

ADD TO CART

Unmounted Precision Pinhole



+21

Volume Pricing	
Qty 1-5	€164,00 each
Qty 6+	€146,00 each
Need More?	Request Quote

Prices shown are exclusive of VAT/local taxes

General

Type: Mounted

Physical & Mechanical Properties

Outer Diameter (mm): 25.4 +0.000/-0.05

Construction: Stainless Steel

Fixed Aperture Diameter (μm): 2

Thickness (mm): 0.01 Nominal

Aperture Tolerance (μm): ±0.5

Aperture Centration (μm): ±125

Threading & Mounting

Mount Thickness (mm): 2.54

Regulatory Compliance

RoHS 2015: **Compliant**

Certificate of Conformance: [View](#)

Reach 247: **Compliant**

Product Details

- Available in Aperture Mounts for a Secure Mechanical Support
- Pinhole Sized Ranging from 1 to 1,000 Microns
- **High Power Apertures** Available

Unmounted Precision Pinholes

Precision Pinholes are high quality apertures centered to ±0.002" (50 microns). They are constructed of stainless steel and are 3/8" (9.5mm) in diameter. Smaller diameter pinholes will reduce energy throughput, while larger diameter pinholes will pass more spatial noise. Precision pinholes have sizes ranging from 1 to 1,000 microns. Typical applications include leak detection, aerosol studies, holography, fiber optics guides, spatial filtering, research, and more.

Use the [Precision Pinhole Mount](#) to integrate unmounted pinholes into a variety of mechanical components easily.

Mounted Precision Pinholes

Precision Pinholes are available in aperture mounts for secure mechanical support. The mounts also fit into various optical assemblies. Each 9.5mm diameter pinhole is sealed within a 25mm diameter black-anodized aluminum mount. The mount is clearly labeled with a pinhole aperture diameter for easy identification.

Note: Aperture Centering to Mount ± 125 microns. Edmund Optics offers a wide selection of precision pinholes available in a range of diameters and are ideal for their aperture geometry and high edge quality. Available in industrial environments.

Please select your shipping country to view the most accurate inventory information, and to determine the correct Edmund Optics sales office for your order.

Select Your Country/Region:

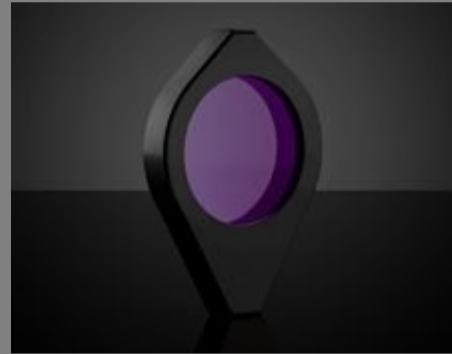
research, and more. These pinholes are used in a variety of techniques, providing consistent circular apertures for applications, from experimental labs to

Technical Information

Related Products



Precision Pinhole Mount



Compact Mirror & Lens Mounts

Frequently Purchased Together



#55-530 - 10.0 - 60.0mm Optic Height, Metric Bar-Type Optic Holder
€108,00

Qty



#56-274 - 5µm Aperture Diameter, Mounted, Precision Pinhole
€98,50

Qty



#58-514 - 50mm Square Metric Magnetic Base
€120,00

Qty



#58-973 - 76.2mm Length, M6 Thread, Post Holder
€15,75

Qty



Resources

Media Type

- FAQ
- Glossary
- Application Note
- Trending in Optics
- Video

? FAQ

What do spatial filters do and how do I use them?

GLOSSARY

Spatial Filter

APPLICATION NOTE

Understanding Spatial Filters

? FAQ

Do you have
any

? FAQ

Do your iris
diaphragms

GLOSSARY

Axial Runout

Please select your shipping country to view the most accurate inventory information, and to determine the correct Edmund Optics sales office for your order.

Select Your Country/Region:

[View More](#)