

[All Products](#) / [Laser Optics](#) / [Laser Optics](#) / [633nm Laser Line Coated Plano-Convex](#)

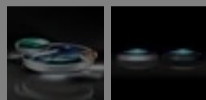
[See all 102 Products in Family](#)

TECHSPEC® 25.0mm

V-Coat, PCX Lens



633nm Laser Line Coated Plano-Convex (PCX) Lenses



Please select your shipping country to view the most accurate inventory information, and to determine the correct Edmund Optics sales office for your order.

Select Your Country/Region: European Union

Submit

Options

1

€59^{,00}

ADD TO CART

Volume Pricing

Qty 1-9 €59,00 each

Qty 10-25 €53,50 each

Qty 26-49 €47,25 each

Need More? [Request Quote](#)

Prices shown are exclusive of VAT/local taxes

Product Downloads

- STEP:stp
- Curve:pdf
- PDF Drawing:pdf
- ISO 10110 Drawing
- IGES:igs
- Zemax:zar
- Zemax:zip
- Zemax:zmx
- eDrawing:eprt
- Code V:seq
- EO Spec Sheet
- [Download All](#)

General

Type: Plano-Convex Lens

Physical & Mechanical Properties

Diameter (mm): 25.00 +0.0/-0.025

Centering (arcmin): <1

Center Thickness CT (mm): 4.90 ±0.10

Edge Thickness ET (mm): 1.68

Clear Aperture CA (mm): 24

Bevel: Protective as needed

Optical Properties

Effective Focal Length EFL (mm): 50.00 @ 587.6nm

Back Focal Length BFL (mm): 46.75

Coating: Laser V-Coat (633nm)

Coating Specification: R_{abs} <0.25% @ 633nm

Substrate: [N-BK7](#)

Surface Quality: 40-20

Power (P-V) @ 632.8nm: 1.5λ

Irregularity (P-V) @ 632.8nm: λ/4

Focal Length Tolerance (%): ±1

Radius R₁ (mm): 25.84

f/#: 2.00

Numerical Aperture NA: 0.25

Design 633
Wavelength
DWL (nm):

Damage 5 J/cm² @
Threshold, By 633nm, 10ns
Design: ⓘ

Regulatory Compliance

RoHS 2015: **Compliant**

Reach 235: **Compliant**

Please select your shipping country to view the most accurate inventory information, and to determine the correct Edmund Optics sales office for your order.

Select Your Country/Region:

Need different specs or modifications?

Edmund Optics offers comprehensive custom manufacturing services for optical and imaging components tailored to your specific application requirements. Whether in the prototyping phase or preparing for full-scale production, we provide flexible solutions to meet your needs. Our experienced engineers are here to assist—from concept to completion.

Our capabilities include:

- Custom dimensions, materials, coatings, and more
- High-precision surface quality and flatness
- Tight tolerances and complex geometries
- Scalable production—from prototype to volume

Learn more about our [custom manufacturing capabilities](#) or submit an inquiry [here](#).

Product Details

- <0.25% Reflection at 633nm for HeNe Applications
- BBAR Coating Options Also Available: [uncoated](#), [MgF₂](#), [VIS 0°](#), [VIS-NIR](#), [NIR I](#), [NIR II](#)
- [405nm](#), [532nm](#), 633nm, [785nm](#), [980nm](#), [1064nm](#), and [1550nm](#) V-Coated Options Offered

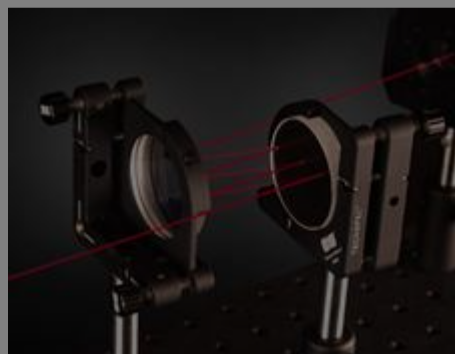
TECHSPEC® 633nm Laser Line Coated Plano-Convex (PCX) Lenses are designed for maximum throughput at the specified laser wavelength. These lenses are ideal for collecting and focusing light from laser sources and their corresponding harmonics. With a maximum reflection of <0.25% per surface at the design wavelength, the lenses will provide superior transmission in applications utilizing multiple optical components. TECHSPEC® 633nm Laser Line Coated Plano-Convex (PCX) Lenses are available Laser V-Coated in a range of other wavelengths: [405nm](#), [532nm](#), [785nm](#), [980nm](#), [1064nm](#), and [1550nm](#). Other coating options are available, including [uncoated](#), [MgF₂](#), [VIS 0°](#), [VIS-NIR](#), [NIR I](#), and [NIR II](#).

LASER OPTICS MADE BY EDMUND OPTICS®

[LEARN MORE](#)

Technical Information

Related Products



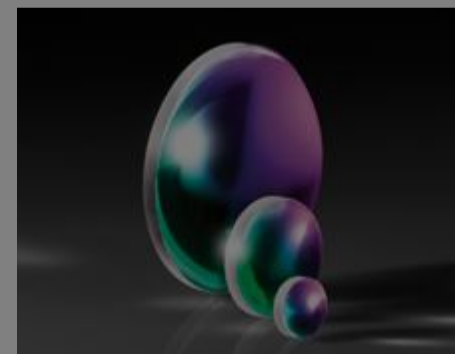
Laser Optics



Laser Sources



Arcturus® HeNe Beam Expanders



633nm Laser Line Coated Fused Silica PCX Lenses

Frequently Purchased Together



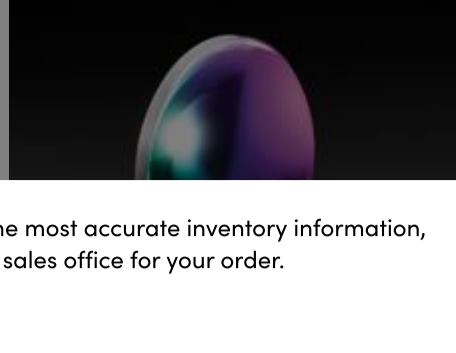
#32-624 - 25mm Dia. x 50mm FL
Uncoated, Double-Convex Lens
€35,75

Qty



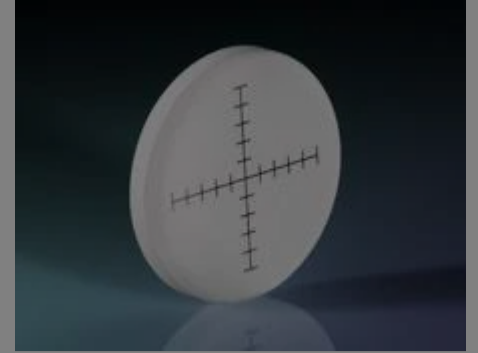
Aspheric Lens
€80,00

Qty



PCX Lens
€166,00

Qty



#34-892 - 27mm Diameter, White
Ivory Glass Crossline Reticle
€220,00

Qty

Please select your shipping country to view the most accurate inventory information, and to determine the correct Edmund Optics sales office for your order.

Select Your Country/Region:

Compatible Mounts

| | Title | Type | Compare | Stock Number | Price | Buy |
|--|--|--------------------------------------|---------|--------------|--|---|
| | 25.0/25.4mm Optic Dia., SM1 Thin Mount, M4 | Fixed | | #13-787 | €21,00 Request Quote | 9 In Stock <input type="text" value="1"/> |
| | 25.0/25.4mm Optic Dia., SM1 Thin Mount, 8-32 | Fixed | | #13-788 | €21,00 Request Quote | 20+ In Stock <input type="text" value="1"/> |
| | 25.0mm Optic Dia., Optic Mount | Fixed | | #64-560 | €32,75 Request Quote | CONTACT US <input type="text" value="1"/> |
| | 25mm Thin Inner Single Optic Mount | Fixed | | #38-755 | €41,00 Request Quote | 14 In Stock <input type="text" value="1"/> |
| | 25.0/25.4mm Optic Dia., L-Slot Direct Mount | Fixed | | #36-410 | €68,00 Request Quote | 15 In Stock <input type="text" value="1"/> |
| | 25.0/25.4mm Optic Dia., Side Flange Direct Mount | Fixed | | #36-414 | €71,00 Request Quote | 20+ In Stock <input type="text" value="1"/> |
| | 25mm Thin Inner Pair Optic Mounts | Fixed | | #11-052 | €80,50 Request Quote | 3 In Stock <input type="text" value="1"/> |
| | 25mm Thick Inner Pair Optic Mounts | Fixed | | #11-054 | €80,50 Request Quote | 5 In Stock <input type="text" value="1"/> |
| | 25/25.4mm Diameter, C-Mount Thin Optic Mount | Fixed | | #56-353 | €99,00 Request Quote | 20+ In Stock <input type="text" value="1"/> |
| | 25.0/25.4mm Optic Dia., L-Slot and Rotation Direct Mount | Adjustable - Rotary | | #36-411 | €102,00 Request Quote | 5 In Stock <input type="text" value="1"/> |
| | 25.0/25.4mm Optic Dia., X-Y Translating Optic Mount | Adjustable - Linear (XY) | | #62-956 | €276,00 Request Quote | CONTACT US <input type="text" value="1"/> |
| | 25.0/25.4mm Optic Dia., X-Y-Z Translating Optic Mount | Adjustable - Linear (XYZ) | | #62-959 | €540,00 Request Quote | 6 In Stock <input type="text" value="1"/> |
| | 25.0/25.4mm Optic Dia., 5 Axes Optical Mount | Adjustable - Linear (XYZ) & Tip-Tilt | | #13-776 | €755,00 Request Quote | 2 In Stock <input type="text" value="1"/> |

Please select your shipping country to view the most accurate inventory information, and to determine the correct Edmund Optics sales office for your order.

Select Your Country/Region:

Media Type

- Application Note
- Technical Tool
- Video
- FAQ
- Trending in Optics
- Glossary
- Scientific Paper
- Published Article

APPLICATION NOTE

An Introduction to Optical Coatings

TECHNICAL TOOL

Gaussian Beams Calculator

VIDEO

Polarization Directed Flat Lenses Product Review

? FAQ

What is the best lens for focusing or collimating th...

↑ TRENDING IN OPTICS

Free-Space Optical Communication

APPLICATION NOTE

Common Laser Optics Materials

[View More](#)