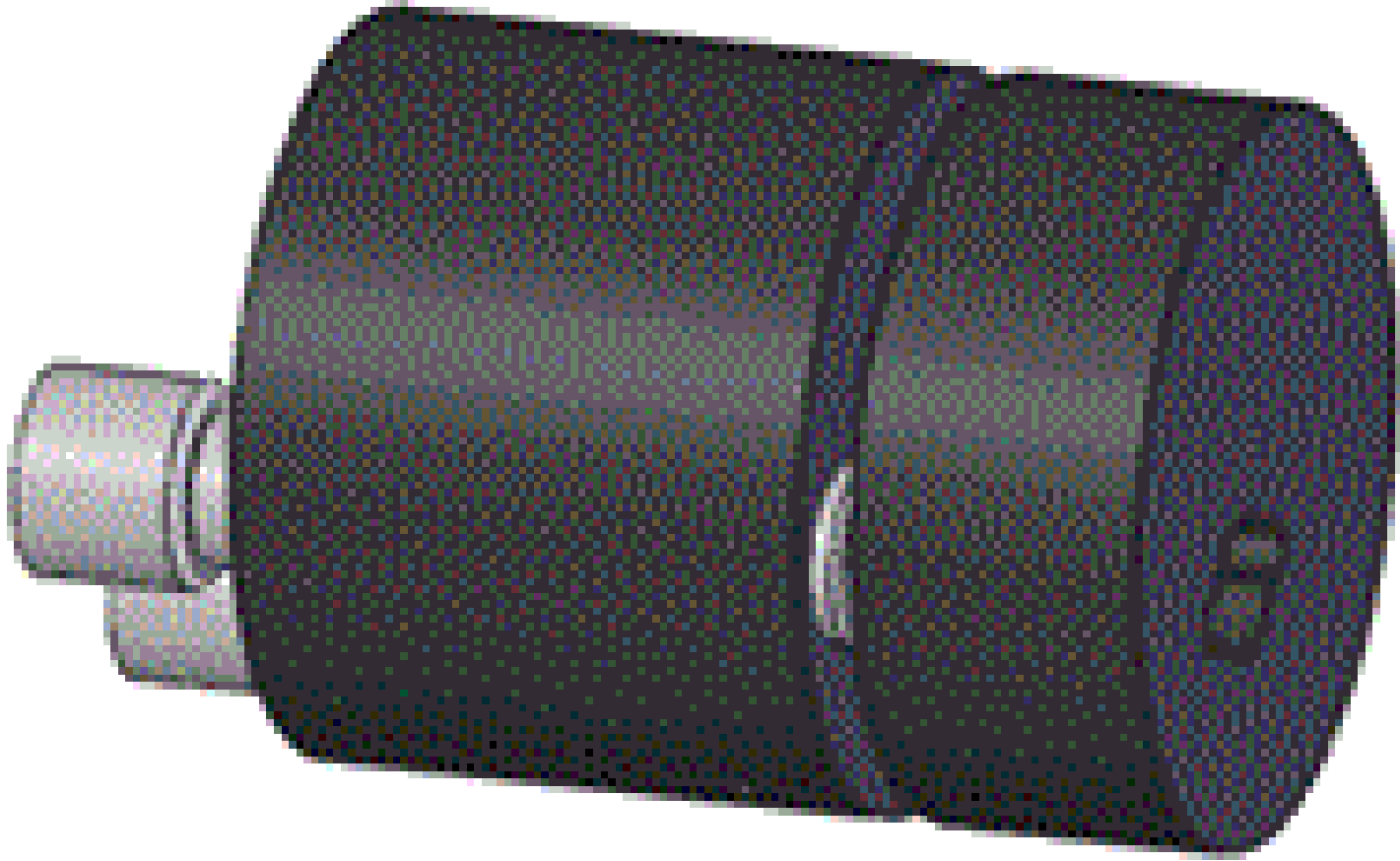


TECHSPEC® 25mm Tip/Tilt Solid Table



25mm Tip/Tilt Solid Table, #86-026

Stock **#86-026** [CONTACT US](#)

- 1 + €303.⁰⁰

ADD TO CART

Volume Pricing	
Qty 1+	€303,00 each
Need More?	Request Quote

ⓘ Prices shown are exclusive of VAT/local taxes

Product Downloads

General

Tip-Tilt **Function:**

Circular **Type of Optics:**

25mm Diameter Table (No Tapped Hole) **Note:**

Physical & Mechanical Properties

Compatible Plate Inner Diameter (mm):

25.0

Construction:

Black Anodized Aluminum

Dimensions (mm):

25 Dia.

Adjustment Screw Pitch (mm):

0.5

Travel (°):

±8 Tip/Tilt

Regulatory Compliance

RoHS 2015:

[Compliant](#)

Certificate of Conformance:

[View](#)

Reach 235:

[Compliant](#)

Product Details

- Available for a Range of Optical Components
- Anodized Aluminum Construction with Stainless Steel Screws
- 0.5mm Pitch Fine Adjustment Screw
- [Fixed Optical Mounts](#) Also Available

Ideal for beam steering applications, TECHSPEC® Cage System Adjustable Optical Mounts are used to integrate a variety of optical components into a TECHSPEC Cage System. Designed to fit within the inner diameter of 25mm or 30mm standard [cage system plates](#), these optical mounts utilize set screws to secure optical components in place, providing the stability and adjustment needed for precision optical alignment. [#85-695](#) 25.4mm Kinematic Mount features a 12.7mm clear aperture and can be paired with [#85-699](#) 45° plate beamsplitter mount.