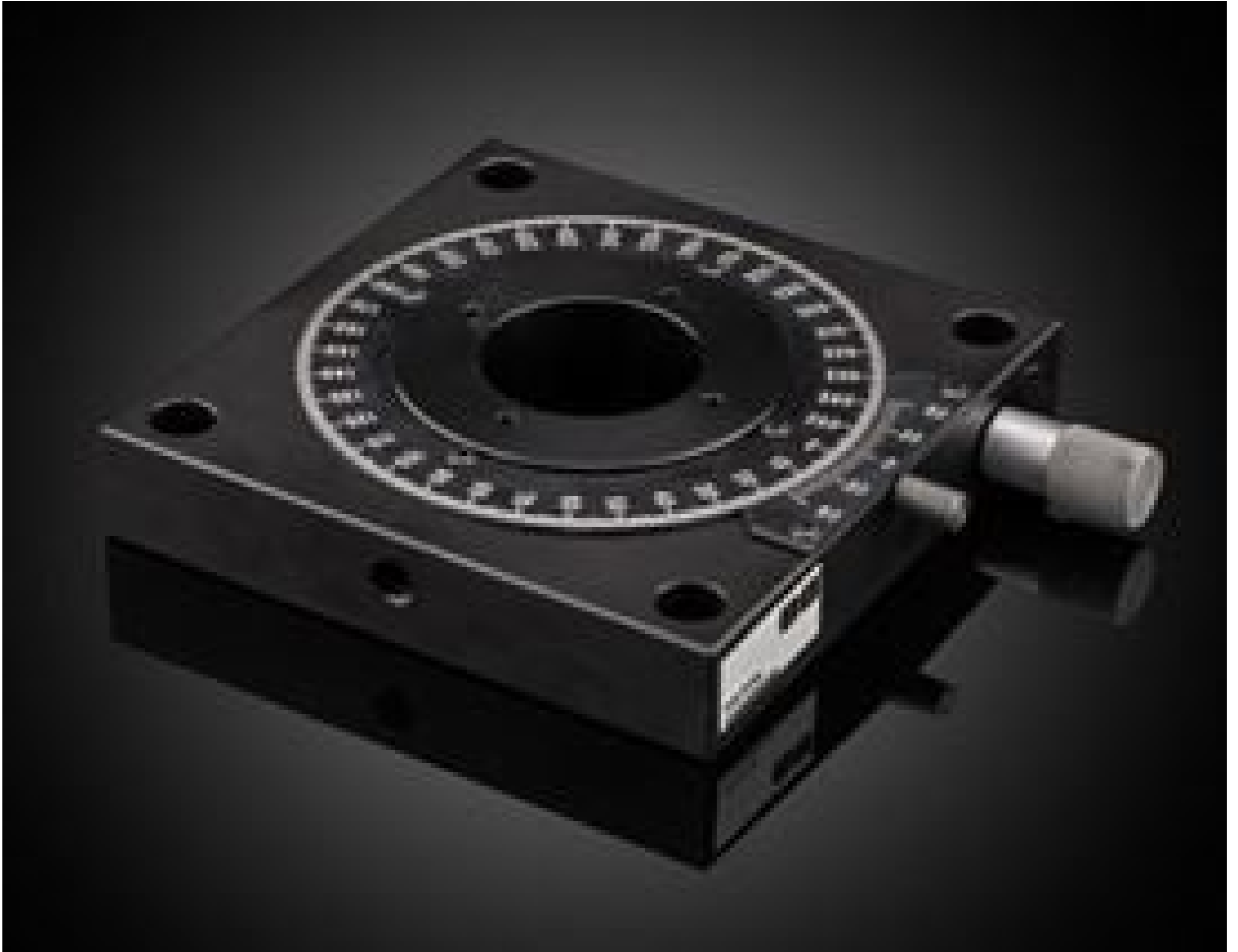


## 2.75" Dia. Heavy Load Rotary Stage, English



#13-773: 2.75" Dia. Heavy Load Rotary Stage, Metric

Stock **#38-195** **1 In Stock**

⊖ 1 ⊕ €1.355<sup>00</sup>

**ADD TO CART**

### Volume Pricing

Qty 1+	€1.355,00 each
Need More?	<a href="#">Request Quote</a>

ⓘ Prices shown are exclusive of VAT/local taxes

### Product Downloads

#### General

English **Type:**

#### Physical & Mechanical Properties

Rotary **Type of Movement:**

120.7 x 120.7 **Stage Size (mm):**

**Travel (°):**

Center Hole:  
1.5" Dia. Thru

Construction:  
Aluminum Top and Base; Steel/bronze Worm Gear Drive

Gear Drive Ratio:  
120:1

Increments (arcmin):  
6 (Vernier)

Load Capacity, Normal (lbs):  
25

Weight (lbs):  
2

Table Diameter (inches):  
2.75 (69.8mm)

### Hardware & Interface Connectivity

Type of Drive:  
Worm Gear

### Threading & Mounting

Mounting Threads:  
(4) 10-32 on 2.0" Dia. B.C.

### Regulatory Compliance

RoHS 2015:  
[Compliant](#)

Certificate of Conformance:  
[View](#)

## Product Details

- Normal Load Capacity of 25lb (11.3kg) for heavy duty applications
- Precision Worm Gear Drive
- Compatible with Metric and English 5" Ball Stages

Heavy Load Capacity Rotary Positioning Stages provide smooth, continuous adjustment over a full 360° travel range. A precision worm gear drive allows exact angular positioning of the rotation stage, and a position locking knob allows the stage to be positively locked in place. This heavy duty rotation stage offers a 2.75" diameter stage with a calibrated dial and ±60 arcminute Vernier scale. Heavy Load Capacity Rotary Positioning Stages can be combined with [metric](#) and [English](#) stages that have mounting holes on 4.0" centers (5" ball stages) for multi-axis set ups. These stages have a load capacity of 25lb/11.3kg for heavy duty applications.

## Technical Information

