

[All Products](#) / [Lights and Illuminators](#) / [Effilux Adjustable LED Bar Light](#)

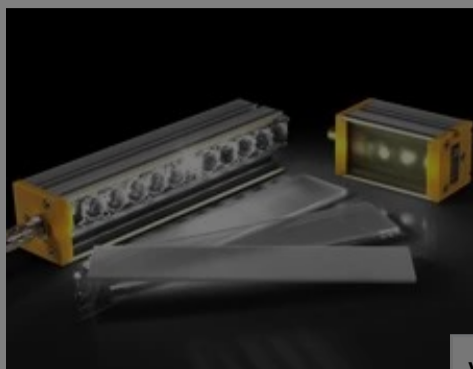
[See all 37 Products in Family](#)

# 3 LED, Red Adjustable LED Bar Light

Please select your shipping country to view the most accurate inventory information, and to determine the correct Edmund Optics sales office for your order.

Select Your Country/Region: European Union

[Submit](#)



1

€468<sup>00</sup>

[ADD TO CART](#)

Volume Pricing	
Qty 1+	€468,00 each
Need More?	<a href="#">Request Quote</a>

Product Downloads

- [Spec Sheets:pdf](#)
- [Download All](#)

Prices shown are exclusive of VAT/local taxes

## General

<b>Model Number:</b>	EFFI-FLEX-3-625	<b>Number of LEDs:</b>	3.0
<b>Type of Illumination:</b>	LED Illuminator	<b>Manufacturer:</b>	Effilux
<b>Geometry:</b>	Bar Light	<b>Illumination Mode:</b>	Strobed or Constant

## Physical & Mechanical Properties

<b>Dimensions (mm):</b>	95.0 x 51.0 x 49.0
-------------------------	--------------------

## Optical Properties

<b>Color:</b>	Red	<b>Wavelength:</b>	625 nm
---------------	-----	--------------------	--------

## Hardware & Interface Connectivity

<b>Connector:</b>	M12, 5 pins	<b>Input Voltage (V):</b>	24V DC
<b>Power Supply:</b>	Power Supply Required and Sold Separately: USA: <a href="#">#15-874</a> Europe: <a href="#">#15-875</a> Japan: <a href="#">#73-409</a> Korea: <a href="#">#73-409</a> China: <a href="#">#15-874</a>		

## Threading & Mounting

<b>Mount:</b>	2 Rails (1 for M6 T-Nuts)
---------------	---------------------------

## Environmental & Durability Factors

**Operating Temperature (°C):** -10 to 50

**Environmental Rating:** IP40

## Regulatory Compliance

Certificate of Conformance: [View](#)

Please select your shipping country to view the most accurate inventory information, and to determine the correct Edmund Optics sales office for your order.

**Select Your Country/Region:**

## Product Details

- Direct Access to Optics for Quick, Manual Adjustment of Illumination Cone Angles
- Included Interchangeable Windows Allows for Easy Adjustment of Light Diffusion
- Easy to Integrate Linescan Accessory for Linear or Darkfield Lighting

Effilux Adjustable LED Bar Lights provide versatility by allowing the emission angle of the light to be modified by the user. Various illumination emission angles can be modified by simply removing the LED window that's held in place by screws to access the lens array and adjust the lens array height to one of the three indicated positions. Effilux Adjustable LED Bar Lights include three interchangeable windows: transparent, semi-diffuse, and opaline. By placing the optional polarizer or linescan accessories beneath the transparent window, glare can be eliminated or linear lighting created. The flexibility and ease of user modifications for these bar lights make them ideal for use in many application types.

**Note:** 24V power supply and M12 female to male cable are required. When first powered, these lights start in their Overdriven state with 700% intensity then relax to normal intensity.

### 3D-Printable Mount Files



Bar or Line Light Configuration

[Download Now](#)

Designed for use with the [Articulating Arm Mounting Systems](#), these 3D-printed mounts allow easy positioning of lights in brightfield or darkfield setups. The design is based on mounting illumination to ¼-20" breadboards or into 80/20 extrusion systems, but can be adapted based on user needs. Mounts are available for ring, bar, line, and inline spot lights.

#### Application Note

Illumination Mounts for Machine Vision Applications  
[Read >>](#)

#### Video

Assembly of 3D Printed Mounts for Common Illumination Geometries  
[Watch >>](#)

## Accessories

**Note:** Compatible accessories for individual stock numbers may vary. If unsure about which accessories work with your products, please contact us [here](#).

	Title	Compare	Stock Number	Price	Buy
<a href="#">MORE+</a>	Power Supply for Effilux Lights, UK Type Adapter		#73-683	€258,00 <a href="#">Request Quote</a>	<a href="#">CONTACT US</a> 1
<a href="#">MORE+</a>	Power Supply for Effilux Lights, CN Type Adapter		#73-684	€258,00 <a href="#">Request Quote</a>	<a href="#">CONTACT US</a> 1
<a href="#">MORE+</a>	Intensity Adjustment Dimmer for Effilux LED Lights		#75-337	€216,00 <a href="#">Request Quote</a>	<a href="#">CONTACT US</a> 1
<a href="#">MORE+</a>	Intensity Adjustment Potentiometer for Effilux RGB LED Lights		#15-876	€378,00 <a href="#">Request Quote</a>	<a href="#">CONTACT US</a> 1
<a href="#">MORE+</a>	Power Supply for Effilux LED Lights, EU Adapter		#15-875	€261,00 <a href="#">Request Quote</a>	<a href="#">CONTACT US</a> 1

	Title	Compare	Stock Number	Price	Buy
<a href="#">MORE+</a>	Polarizer Accessory for			€19,00	<a href="#">CONTACT US</a> 1
<a href="#">MORE+</a>	Polarizer Accessory for				<a href="#">CONTACT US</a> 1
<a href="#">MORE+</a>	Linescan Accessory for 5 LED Bar Light		#34-883	€125,00 <a href="#">Request Quote</a>	1 In Stock 1
<a href="#">MORE+</a>	Polarizer Accessory for 10 LED Bar Light		#34-884	€65,00 <a href="#">Request Quote</a>	1 In Stock 1
<a href="#">MORE+</a>	Linescan Accessory for 10 LED Bar Light		#34-885	€152,00 <a href="#">Request Quote</a>	<a href="#">CONTACT US</a> 1
<a href="#">MORE+</a>	Polarizer Accessory for 15 LED Bar Light		#34-886	€78,00 <a href="#">Request Quote</a>	1 In Stock 1
<a href="#">MORE+</a>	Linescan Diffuser Accessory for 15 LED Bar Light		#34-887	€171,00 <a href="#">Request Quote</a>	1 In Stock 1
<a href="#">MORE+</a>	M12 Female to Male, 5 pin, 2m		#34-869	€51,00 <a href="#">Request Quote</a>	<a href="#">CONTACT US</a> 1
<a href="#">MORE+</a>	M12 Female to Bare Leads, 5 pin, 2m		#34-870	€37,00 <a href="#">Request Quote</a>	<a href="#">CONTACT US</a> 1
<a href="#">MORE+</a>	Swivel Mounting Accessory		#34-889	€71,00 <a href="#">Request Quote</a>	<a href="#">CONTACT US</a> 1

Please select your shipping country to view the most accurate inventory information, and to determine the correct Edmund Optics sales office for your order.

**Select Your Country/Region:**

## Frequently Purchased Together



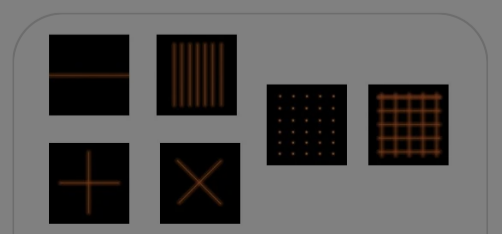
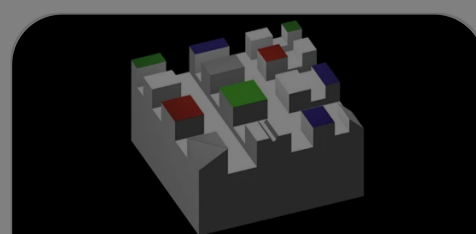
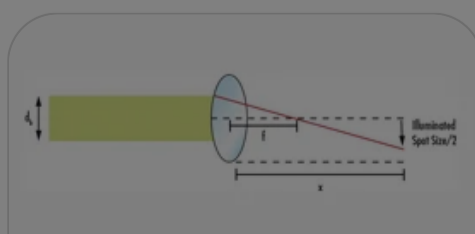
#58-000 - 8.5mm C Series Fixed Focal Length Lens

€275,00

Qty

## Resources

Media Type



- Technical Tool
- Application Note
- FAQ
- Glossary
- Video
- Published Article

TECHNICAL TOOL

## Illumination Spot Size Calculator

APPLICATION NOTE

## Common Illumination Types

APPLICATION NOTE

## Using Structured Illumination

Please select your shipping country to view the most accurate inventory information, and to determine the correct Edmund Optics sales office for your order.

**Select Your Country/Region:**



? FAQ

What is ripple in illuminators and how does it affect mv...



? FAQ

What is the advantage of high frequency illumination?



? FAQ

What are the advantages of LED illumination?

[View More](#)