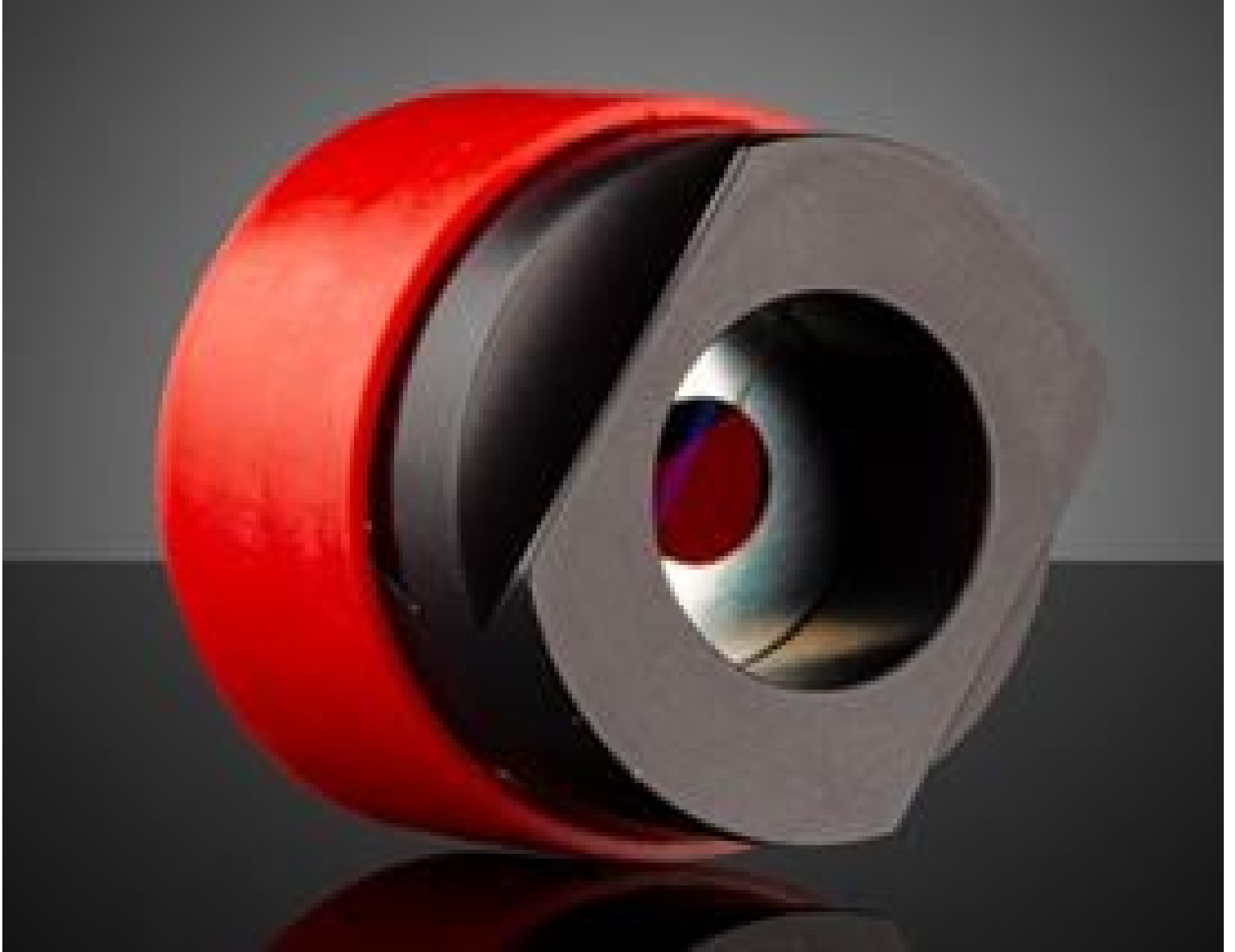


[See all 64 Products in Family](#)

# Coherent® StingRay™ Projection Head 1277520 | 514nm, 30° Fan

See More by [Coherent®](#)



30° Line, 514nm Stingray Projection Head, #89-586

Stock **#89-586** **1 In Stock**

⊖ 1 ⊕ €351<sup>00</sup>

**ADD TO CART**

### Volume Pricing

|            |                               |
|------------|-------------------------------|
| Qty 1+     | €351,00 each                  |
| Need More? | <a href="#">Request Quote</a> |

ⓘ Prices shown are exclusive of VAT/local taxes

### Product Downloads



### General

1 Line, Extended Focus **Type:**

[86-848, 87-522](#) **Compatible Laser Models:**

Coherent® **Manufacturer:**

### Optical Properties

514.00 **Wavelength (nm):**

Green **Color:**

30.00 **Fan Angle (°):**

## Regulatory Compliance

[Exempt](#) **RoHS 2015:**

[Contains SVHC\(s\)](#) **Reach 224:**

[View](#) **Certificate of Conformance:**

## Product Details

- External Focus with up to 100mW Output Power
- Auto Scaling Input Power 5 - 24VDC with Reverse Polarity Protection
- Built-In Microcontroller for Fault Monitor
- [Coherent® StingRay™ Developer's Kit](#) also available

Coherent® StingRay™ and BioRay™ Laser Diode Modules are ideal for a variety of alignment, machine vision, and biomedical applications. They are available in a wide range of output powers, wavelengths, and fan angles. High precision optical components and sophisticated drive electronics provide power and control to your application, reducing signal-to-noise ratios and increasing measurement speed. Coherent® StingRay™ and BioRay™ Laser Diode Modules are designed with a flat top power distribution across the beam profile for consistency in line projection widths.

**Note:** For CDRH certified systems (Class IIIb), [#86-878](#) Laser Controller and additional external voltage source (0.5-5V) with BNC connector is required.