

[All Products](#) / [Optomechanics](#) / [Precision Pinholes](#)

[See all 96 Products in Family](#)

400µm Aperture

Please select your shipping country to view the most accurate inventory information, and to determine the correct Edmund Optics sales office for your order.

Select Your Country/Region: European Union

Submit



400µm Aperture Diameter, Mounted, Precision Pinhole, #56-286

1

€84⁰⁰

ADD TO CART

Volume Pricing	
Qty 1-5	€84,00 each
Qty 6-10	€74,20 each
Qty 11+	€68,60 each
Need More?	Request Quote

Prices shown are exclusive of VAT/local taxes

Product Downloads

- STEP:step
- PDF Drawing:pdf
- IGES:igs
- eDrawing:eprt
- EO Spec Sheet
- [Download All](#)

General

Type: Mounted

Physical & Mechanical Properties

Outer Diameter (mm):	25 +0.4/-0.000	Construction:	Stainless Steel
Fixed Aperture Diameter (µm):	400	Thickness (mm):	0.03 Nominal
Aperture Tolerance (µm):	±5	Aperture Centration (µm):	±125

Threading & Mounting

Mount Thickness (mm): 1.25 ±0.05

Regulatory Compliance

RoHS 2015: **Compliant**

Certificate of Conformance: [View](#)

Reach 247: **Compliant**

Product Details

- Available in Aperture Mounts for a Secure Mechanical Support
- Pinhole Sized Ranging from 1 to 1,000 Microns
- **High Power Apertures** Available

Unmounted Precision Pinholes

Precision Pinholes are high quality apertures centered to $\pm 0.002''$ (50 microns). They are constructed of stainless steel and are $3/8''$ (9.5mm) in diameter. Smaller diameter pinholes will reduce energy throughput, while larger diameter pinholes will pass more spatial noise. Precision pinholes have sizes ranging from 1 to 1,000 microns. Typical applications include leak detection, aerosol studies, holography, fiber optics guides, spatial filtering, research, and more.

Use the [Precision Pinhole Mount](#) to integrate unmounted pinholes into a variety of mechanical components easily.

Mounted Precision Pinholes

Precision Pinholes are available in aperture mount and unmounted. A 9.5mm diameter pinhole is sealed within a 25mm diameter black-anodized aluminum mount.

Note: Aperture Centering to Mount ± 125 microns. Edmund Optics offers a wide selection of precision pinholes available in a range of diameters and are ideal for applications requiring precise aperture geometry and high edge quality. Available in both unmounted and mounted configurations for use in research and industrial environments.

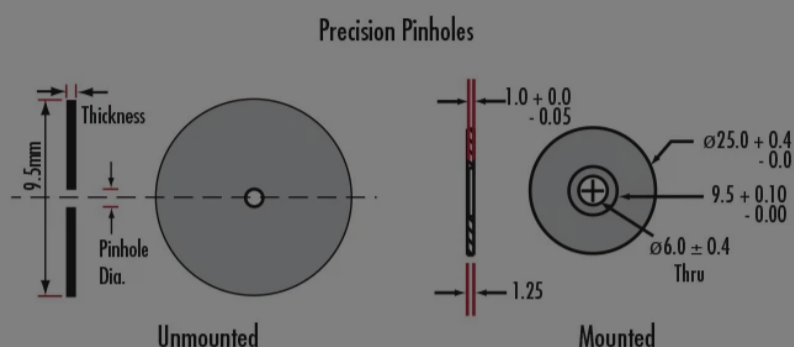
Please select your shipping country to view the most accurate inventory information, and to determine the correct Edmund Optics sales office for your order.

Select Your Country/Region:

A 9.5mm diameter pinhole is sealed within a

research, and more. These pinholes provide precise apertures and consistent circular apertures, providing consistent circular apertures, from experimental labs to

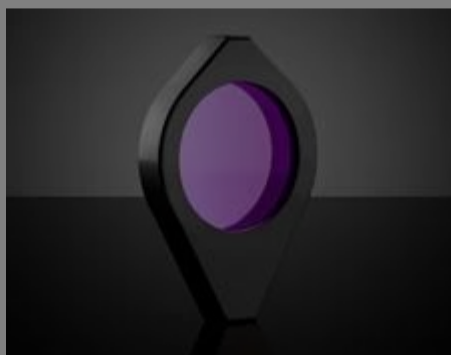
Technical Information



Related Products



Precision Pinhole Mount



Compact Mirror & Lens Mounts

Frequently Purchased Together



#27-505 - 125mm Dia x 250mm Focal Length, PCX Condenser Lens
€139,00

Qty



#30-941 - 21.5mm EFL Mounted, RKE Precision Eyepiece
€122,00

Qty



#32-323 - 25mm Dia. x 50mm FL, MgF₂ Coated, Achromatic Doublet Lens
€122,00

Qty



#06-391 - 4mm Dia x 16mm FL Commercial Grade Achromatic Lens
€19,95

Qty



Resources

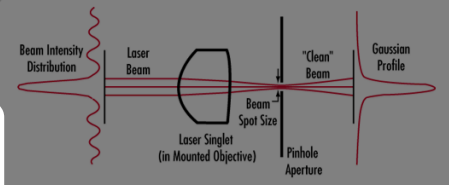
Media Type

- FAQ
- Glossary
- Application Note
- Trending in Optics
- Video

Please select your shipping country to view the most accurate inventory information, and to determine the correct Edmund Optics sales office for your order.

Select Your Country/Region:

Do you and how do I use them?



APPLICATION NOTE

Understanding Spatial Filters



? FAQ

Do you have any components that would...



? FAQ

Do your iris diaphragms have mounts for...



GLOSSARY

Axial Runout

[View More](#)