

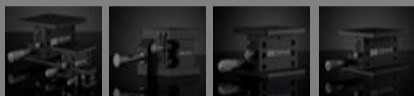
[All Products](#) / [Optomechanics](#) / [Vertical Translation Stages](#)

[See all 20 Products in Family](#)

**TECHSPEC® 40mm**



TECHSPEC® Vertical Translation Stages



Please select your shipping country to view the most accurate inventory information, and to determine the correct Edmund Optics sales office for your order.

Select Your Country/Region: European Union

Submit

1

€725<sup>00</sup>

ADD TO CART

Volume Pricing

Qty 1-2 €725,00 each

Qty 3+ €634,00 each

Need More? [Request Quote](#)

Prices shown are exclusive of VAT/local taxes

Product Downloads

- STEP:step
- PDF Drawing:pdf
- IGES:igs
- eDrawing:eprt
- EO Spec Sheet
- [Download All](#)

General

Type: Metric

Physical & Mechanical Properties

Type of Movement: Linear (Z)

Guide System: Crossed Roller Bearing

Stage Size (mm): 40 x 40

Travel (mm): 10

Center Hole: M6 x 1

Construction: Aluminium Stage

Leadscrew Pitch (mm): 0.5

Load Capacity (kg): 2

Stage Size (inches): 1.57 x 1.57

Straight Line Accuracy (µm): 3

Hardware & Interface Connectivity

Type of Drive: Lead Screw

Threading & Mounting

Mounting Threads: (1) M6 x 1, (4) M3 x 0.5, (8) M2 x 0.4

Regulatory Compliance

RoHS 2015: **Compliant**

Certificate of Conformance: [View](#)

REACH 241: **Compliant**

**Bottom adapter plates**, sold separately, are required to mount 30mm and 40mm stages to standard breadboards.

- Mechanically Compatible with our **TECHSPEC® Stages**
- Fine Micrometer Movement
- Locking Screw on Stages

Our newly developed precision TECHSPEC® Vertical stages feature a high-precision guide system that provides high accuracy, rigidity and load capacity. Each stage is designed to allow the user to create a number of multi-axis configurations. These stages have a locking screw to prevent unwanted movement. The stages are available in both English and Metric.

Please select your shipping country to view the most accurate inventory information, and to determine the correct Edmund Optics sales office for your order.

**Select Your Country/Region:**

Our newly developed precision TECHSPEC® Vertical stages feature a high-precision guide system that provides high accuracy, rigidity and load capacity. Each stage is designed to allow the user to create a number of multi-axis configurations. These stages have a locking screw to prevent unwanted movement. The stages are available in both English and Metric.

## Technical Information

## Accessories

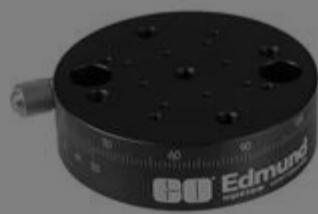
**Note:** Compatible accessories for individual stock numbers may vary. If unsure about which accessories work with your products, please contact us [here](#).

|                       | Title  | Compare | Stock Number | Price  | Buy   |
|-----------------------|--|---------|--------------|--|---|
| <a href="#">MORE+</a> | Bottom Adapter Plate for 30mm/40mm Stages, English |         | #66-491      | €77,50<br><a href="#">Volume Pricing</a>   <a href="#">Request Quote</a> | 5 In Stock <input type="text" value="1"/>                 |
| <a href="#">MORE+</a> | Top Adapter Plate for 30mm/40mm Stages, English    |         | #66-492      | €77,50<br><a href="#">Volume Pricing</a>   <a href="#">Request Quote</a> | 20+ In Stock <input type="text" value="1"/>               |
| <a href="#">MORE+</a> | Top Adapter Plate for 30mm/40mm Stages, Metric     |         | #66-493      | €77,50<br><a href="#">Volume Pricing</a>   <a href="#">Request Quote</a> | <a href="#">CONTACT US</a> <input type="text" value="1"/> |
| <a href="#">MORE+</a> | Bottom Adapter Plate for 30mm/40mm Stages, Metric  |         | #66-620      | €77,50<br><a href="#">Request Quote</a>                                  | 1 In Stock <input type="text" value="1"/>                 |

## Related Products



Crossed-Roller Bearing Linear Translation Stages (Standard-Top Model)



Rotary Stages



Tip-Tilt Stages



Goniometers

## Frequently Purchased Together



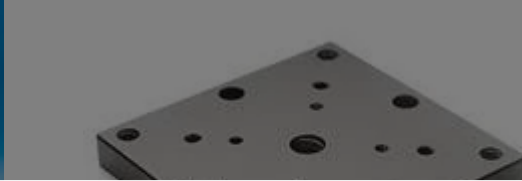
#43-027 - 15" x 15", 0.090" FL,  
Lenticular Array  
€297,00

Qty



€298,00

Qty



€361,00

Qty



#56-790 - 50mm MegaPixel Fixed  
Focal Length Lens  
€333,00

Qty

Please select your shipping country to view the most accurate inventory information, and to determine the correct Edmund Optics sales office for your order.

**Select Your Country/Region:**

# Resources

## Media Type

- Video
- FAQ
- Glossary
- Application Note

▶ VIDEO

Important  
Concepts for  
Selecting  
Manual...

▶ VIDEO

Multi-Axis  
Translation  
Stage  
Confiauratio...

▶ VIDEO

Multi-Axis  
Translation  
Stage  
Confiauratio...

▶ VIDEO

Translation  
Stage  
Specifications  
to Know

? FAQ

How do I  
mount a ball  
bearing linear  
translation...

? FAQ

Do you sell X-Z  
translation  
staaes?

[View More](#)