

[All Products](#) / [Lights and Illumination](#) / [Advanced Illumination MicroBrite](#)

[See all 13 Products in Family](#)

50 x 50mm, IR & Visible Light Backlights (Recertified)

See More by [Advanced Illumination](#)

Please select your shipping country to view the most accurate inventory information, and to determine the correct Edmund Optics sales office for your order.

Select Your Country/Region: European Union

Submit



Advanced Illumination MicroBrite High Intensity Edge-Lit Backlights

Stock #18-551-RCD-05P **RECERTIFIED** 1 In Stock

1

€481^{,95}

ADD TO CART

Volume Pricing	
Qty	€481,95 each
1+	each
Need More?	Request Quote

Product Downloads
Spec Sheets:pdf

Prices shown are exclusive of VAT/local taxes

General

Model Number:	BT050050-850IC	LED Lifetime (hours):	50,000
Type of Illumination:	LED Illuminator	Note:	Optional Manual Intensity Adjustment #86-887 and #89-555 are Available
Manufacturer:	Advanced Illumination	Geometry:	Backlight
Illumination Mode:	Constant		

Physical & Mechanical Properties

Dimensions (mm):	70.3 x 54.71 x 11.33	Weight (g):	54.43
Active Area (inches):	1.40 x 1.35		

Optical Properties

Color:	IR	Wavelength (nm):	850
---------------	----	-------------------------	-----

Hardware & Interface Connectivity

Connector:	Flying Leads	Input Voltage (V):	24V
-------------------	--------------	---------------------------	-----

Environmental & Durability Factors

Operating Temperature (°C):	0 - 60	Environmental Rating:	IP50
------------------------------------	--------	------------------------------	------

Regulatory Compliance

Product Details

Please select your shipping country to view the most accurate inventory information, and to determine the correct Edmund Optics sales office for your order.

Select Your Country/Region:

- High Intensity Machine Vision Illuminator
- Edge-to-Edge Uniform, Low Heat Illumination
- Thin, Compact Form Factor
- Optional Manual Intensity Adjustments ([#86-887](#) and [#89-555](#)) Recommended

Advanced Illumination MicroBrite High Intensity Edge-Lit Backlights offer high performance machine vision backlighting in thin, compact housings and outperform higher cost comparable surface mount lights. These bright backlights produce low heat, uniform lighting. To simplify system integration, these thin backlights include a panel mount and are available in the most common machine vision wavelengths. Advanced Illumination MicroBrite High Intensity Edge-Lit Backlights feature ultra-thin profiles and are ideal for applications including edge-detection, part location, hole detection and object gauging.

Note: Requires 24V power supply [#66-855](#). Manual Intensity Adjustment [#86-887](#) and [#89-555](#) are recommended and sold separately.

Accessories

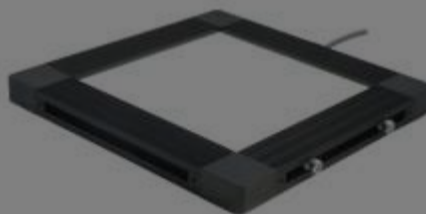
Note: Compatible accessories for individual stock numbers may vary. If unsure about which accessories work with your products, please contact us [here](#).

	Title	Compare	Stock Number	Price	Buy
MORE+	24V Power Supply with Tinned Leads		#66-855	€95,00 Request Quote	6 In Stock <input type="text" value="1"/>
MORE+	Industrial DIN Mountable Intensity Adjustment		#89-555	€144,00 Request Quote	5 In Stock <input type="text" value="1"/>

Related Products



Advanced Illumination Edge-lit Collimated LED Backlights



Advanced Illumination Side-Fired LED Backlights

Resources

Media Type

- Technical Tool
- Application Note
- FAQ
- Glossary
- Video
- Published Article

TECHNICAL TOOL
Illumination Spot Size Calculator

APPLICATION NOTE
Common Illumination Types

APPLICATION NOTE
Using Structured Illumination

FAQ

FAQ

FAQ

What is ripple
in illuminators
and how does
it affect mv...

What is the
advantage of
high frequency
illumination?

What are the
advantages of
LED
illumination?

Please select your shipping country to view the most accurate inventory information,
and to determine the correct Edmund Optics sales office for your order.

Select Your Country/Region: