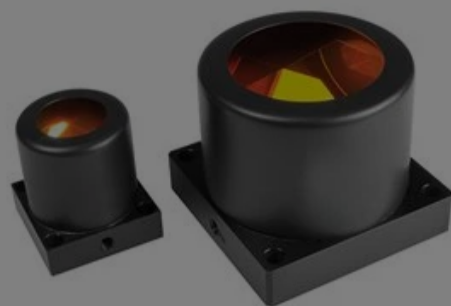


[All Products](#) / [Optics](#) / [Prisms](#) / [Retroreflectors](#)

[See all 41 Products in Family](#)

# 50.8mm Clear Aperture Retroreflector



- 1 +

€1.910<sup>,00</sup>

**ADD TO CART**

Please select your shipping country to view the most accurate inventory information, and to determine the correct Edmund Optics sales office for your order.

Select Your Country/Region: European Union

**Submit**

Volume Pricing	
Qty 1-9	€1.910,00 each
Qty 10-24	€1.719,00 each
Need More?	<a href="#">Request Quote</a>

Prices shown are exclusive of VAT/local taxes

Product Downloads	
STEP:step	Curve:pdf
PDF Drawing:pdf	IGES:igs
eDrawing:eprt	
EO Spec Sheet	<a href="#">Download All</a>

## General

**Type:** Retroreflector

## Physical & Mechanical Properties

**Clear Aperture CA (mm):** 50.8

**Diameter (mm):** 76.20

**Dimensional Tolerance (mm):** ±1.6

## Optical Properties

**Beam Deviation (arcsec):** 1.00

**Coating:** Enhanced Aluminum (450-650nm)

**Exiting Wavefront Accuracy:** 0.25λ

**Substrate:** **BOROFLOAT®**

**Surface Quality:** 80-50

**Image Orientation:** Left-Handed

**Ray Deviation (°):** 180

**Wavelength Range (nm):** 400 - 700

## Threading & Mounting

**Mounting Threads:** (6) ¼-20, (5) M6 x 1.0

## Regulatory Compliance

**RoHS 2015:** **Compliant**

**REACH 201:** **Compliant**

**Certificate of Conformance:** [View](#)

## Product Details

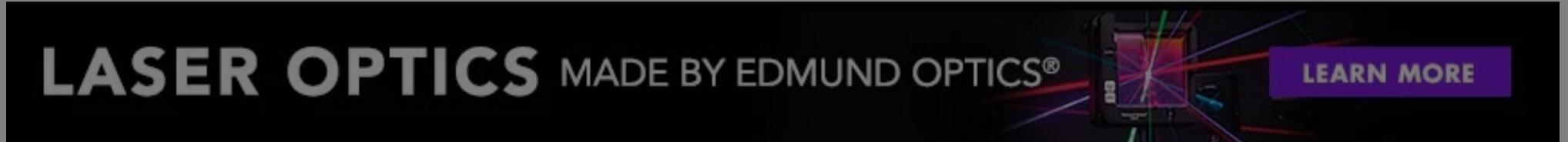
- Incident Light is Reflected Back to the Source
- Hollow Lightweight Design
- No Material Absorption or Chromatic Aberration

Hollow Retroreflectors are constructed of three fused silica lenses in a "cube" configuration. This design is totally insensitive to position and movement. The result is that parallel incident light is reflected back to the source. Since the optical path is in air, this configuration eliminates material absorption and scattering. Hollow Retroreflectors feature a variety of mounting holes on the back plate.

Please select your shipping country to view the most accurate inventory information, and to determine the correct Edmund Optics sales office for your order.

**Select Your Country/Region:**

The specified beam deviation value of each Hollow Retroreflector is the maximum deviation from parallelism of any single return beam from any of the six sub-apertures, when the retroreflector is fully illuminated. Exiting wavefront is the resultant peak-to-valley wavefront deformation from a fully illuminated retroreflector, which is listed in factors of  $\lambda$  (where  $\lambda = 633\text{nm}$ ). The unique, patented cushion mounting makes these Hollow Retroreflectors extremely resistant to shock.



## Technical Information

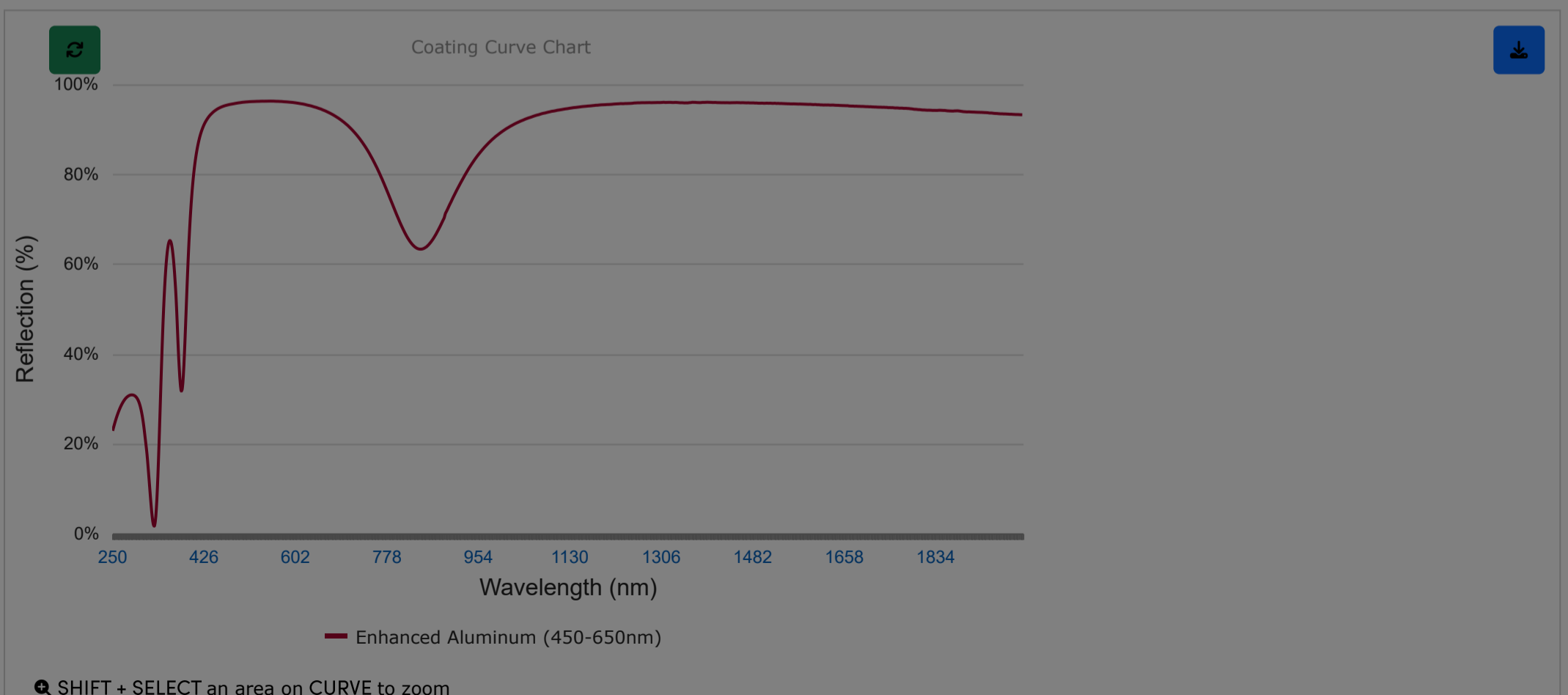
Clear Aperture (CA)	Diameter	L1	L2	A	B	C
6.4mm	8.1mm	8.1mm *	—	—	—	—
12.7mm	14.6mm	19.1mm *	—	—	—	M3 x 0.5
25.4mm	41.3mm	36.5mm	49.2mm	44.5mm	50.8mm	¼-20
50.8mm	76.2mm	62.0mm	79.5mm	78.7mm	94.2mm	¼-20 **
63.5mm	89.4mm	61.5mm	79.0mm	92.3mm	101.6mm	¼-20 **
127.0mm	166.7mm	125.5mm	150.8mm	171.5mm	221.9mm	¼-20 **

\*Does not have back plate

\*\*Additional 8 mounting holes on 50.8mm and larger Dia: (4) M6 x 1.0 at 90° and (4) ¼-20 at 90° on 2" Bolt Circle

## Coating Curves

Enhanced Aluminum (450-650nm)



Please select your shipping country to view the most accurate inventory information, and to determine the correct Edmund Optics sales office for your order.

Select Your Country/Region:



English Stainless Steel Mounting Posts

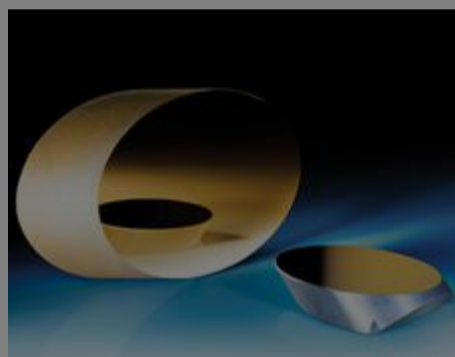


Post Holders



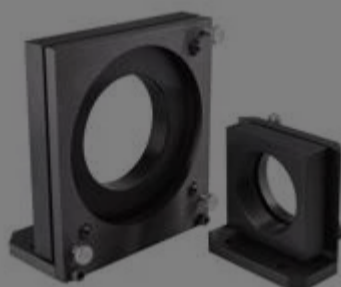
Adjustable Height Post Holders

### Frequently Purchased Together



#32-092 - Elliptical Mirror 76.2mm Minor Axis Protected Gold  
€640,00

Qty



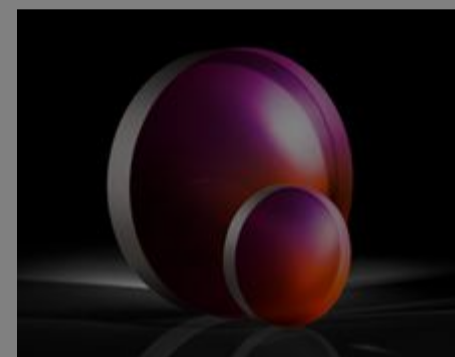
#36-476 - 203.2mm/8.0" Optic Dia., Optical Cell Kinematic Mount  
€3.280,00

Qty



#45-342 - 100 x 100mm Enhanced Aluminum, λ/4 Mirror  
€416,00

Qty



#32-083 - 4.25" Dia. x 45" FL Uncoated, Spherical Mirror  
€451,00

Qty

## Resources

#### Media Type

- Application Note
- Video
- FAQ
- Glossary

CASE STUDIES

Laser Optics for Eye Surgery

TRENDING IN OPTICS

Increasing Challenges for Sourcing Laser Optics...

CASE STUDIES

Using IR Spectroscopy for Counterfeit Drug Detection

APPLICATION NOTE

Metallic Mirror Coatings

VIDEO

Optical Mirrors Review

FAQ

What is the difference between a first-surface...

[View More](#)

Please select your shipping country to view the most accurate inventory information, and to determine the correct Edmund Optics sales office for your order.

**Select Your Country/Region:**