

[All Products](#) / [Optics](#) / [Prisms](#) / [Right Angle Prisms](#) / [Broadband Anti-Reflection \(BBA\)](#)

[See all 40 Products in Family](#)

TECHSPEC®

50mm VIS-NIR (Leg Coated)

Please select your shipping country to view the most accurate inventory information, and to determine the correct Edmund Optics sales office for your order.

Select Your Country/Region: European Union

Submit



Stock #84-520 1 In Stock

1

€293^{.00}

ADD TO CART

Volume Pricing	
Qty 1-5	€293,00 each
Qty 6-25	€235,00 each
Qty 26-49	€226,00 each
Need More?	Request Quote

Product Downloads

- STEP:step
- PDF Drawing:pdf
- IGES:igs
- eDrawing:eprt
- EO Spec Sheet
- [Download All](#)

Prices shown are exclusive of VAT/local taxes

General

Type: Right Angle Prism

Note: Coating on Entrance/Exit Faces

Physical & Mechanical Properties

Dimensional Tolerance (mm): +0.00/-0.10

Bevel: Protective as needed

Clear Aperture (%): 90

Length of Hypotenuse (mm): 70.70

Length of Legs (mm): 50.00

Optical Properties

Angle Tolerance (arcsec): ±15

Coating: VIS-NIR (400-1000nm)

Substrate: [N-BK7](#)

Surface Quality: 40-20

Image Orientation: Left-Handed

Coating Specification: Entrance/Exit Faces: $R_{abs} \leq 0.25\%$ @ 880nm
 $R_{avg} \leq 1.25\%$ @ 400 - 870nm
 $R_{avg} \leq 1.25\%$ @ 890 - 1000nm

Ray Deviation (°): 90

Wavelength Range (nm): 400 - 1000

Damage Threshold, By Design: ⓘ	Entrance/Exit Faces: 5 J/cm ² @ 532nm, 10ns	Power (fringes) @ 632.8nm:	1.25
Irregularity (fringes) @ 632.8nm:	0.25	<div style="border: 1px solid black; padding: 10px; text-align: center;"> <p>Please select your shipping country to view the most accurate inventory information, and to determine the correct Edmund Optics sales office for your order.</p> <p>Select Your Country/Region:</p> </div>	
Regulatory Compliance			
RoHS 2015:	Compliant	Certificate of Conformance:	View
Reach 235:	Compliant		

Need different specs or modifications?

Edmund Optics offers comprehensive custom manufacturing services for optical and imaging components tailored to your specific application requirements. Whether in the prototyping phase or preparing for full-scale production, we provide flexible solutions to meet your needs. Our experienced engineers are here to assist—from concept to completion.

Our capabilities include:

- Custom dimensions, materials, coatings, and more
- High-precision surface quality and flatness
- Tight tolerances and complex geometries
- Scalable production—from prototype to volume

Learn more about our [custom manufacturing capabilities](#) or submit an inquiry [here](#).

Product Details

- Ideal for Low Power Laser Sources
- Multiple BBAR Coatings Available
- Ray Deviation of 90°

TECHSPEC® Broadband Anti-Reflection (BBAR) Coated N-BK7 Right Angle Prisms (Leg Coated) are ideal for a range of low power laser line applications. These prisms feature tight angle tolerances and a precision N-BK7 substrate. The BBAR coating improves transmission efficiency when compared to uncoated right angle prisms. TECHSPEC® Broadband Anti-Reflection (BBAR) Coated N-BK7 Right Angle Prisms (Leg Coated) have their BBAR coating on entrance and exit faces. The prisms are available in lengths from 5 to 50mm.

Right angle prisms are generally used to bend image paths or redirect light at 90°. This produces a left-handed image and depending on the orientation of the prism, the image may be inverted or reverted. Right angle prisms can also be used in combination for image/beam displacement.

Technical Information

Right Angle Prism Ray Path

Right Angle Prism Ray Path

Right Angle Prism Tunnel Diagram

Right Angle Prism Tunnel Diagram

Coating Curves

VIS-NIR (400-1000nm)



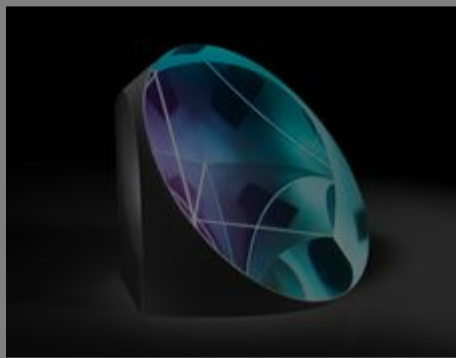
Please select your shipping country to view the most accurate inventory information, and to determine the correct Edmund Optics sales office for your order.

Select Your Country/Region:

🔍 SHIFT + SELECT an area on CURVE to zoom

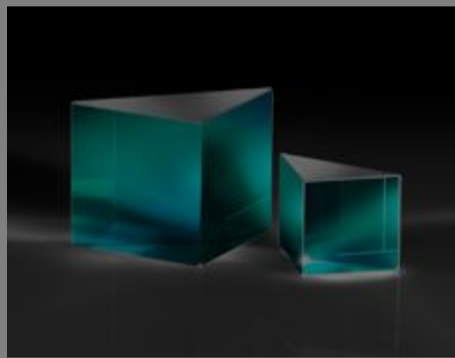
Please note that coating performance outside each product's specified design range is theoretical and may vary.

Frequently Purchased Together



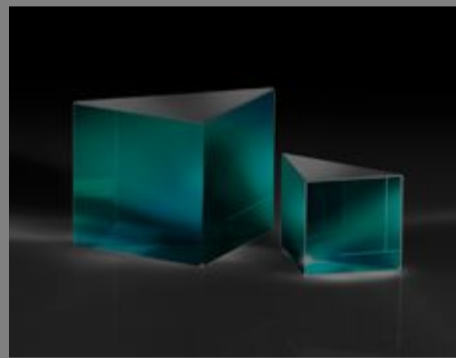
#45-191 - 50.8mm Silver Coated, Corner Cube Prism
€431,00

Qty



#84-510 - 25mm VIS 0° Coated, N-BK7 Right Angle Prism (Leg Coated)
€146,00

Qty



#84-518 - 25mm VIS-NIR Coated, N-BK7 Right Angle Prism (Leg Coated)
€146,00

Qty



#88-540 - 40 x 40mm Protected Silver, λ/4 Mirror
€132,00

Qty

Resources

Media Type

- Application Note
- Video
- FAQ
- Glossary

📄 APPLICATION NOTE

Anti-Reflection (AR) Coatings

📄 APPLICATION NOTE

An Introduction to Optical Coatings

▶ VIDEO

Optical Prisms Review

? FAQ

I'd like to adhere two prisms together. ho...

GLOSSARY

Dove Prism

GLOSSARY

Equilateral (Dispersing) Prism

Please select your shipping country to view the most accurate inventory information, and to determine the correct Edmund Optics sales office for your order.

Select Your Country/Region: