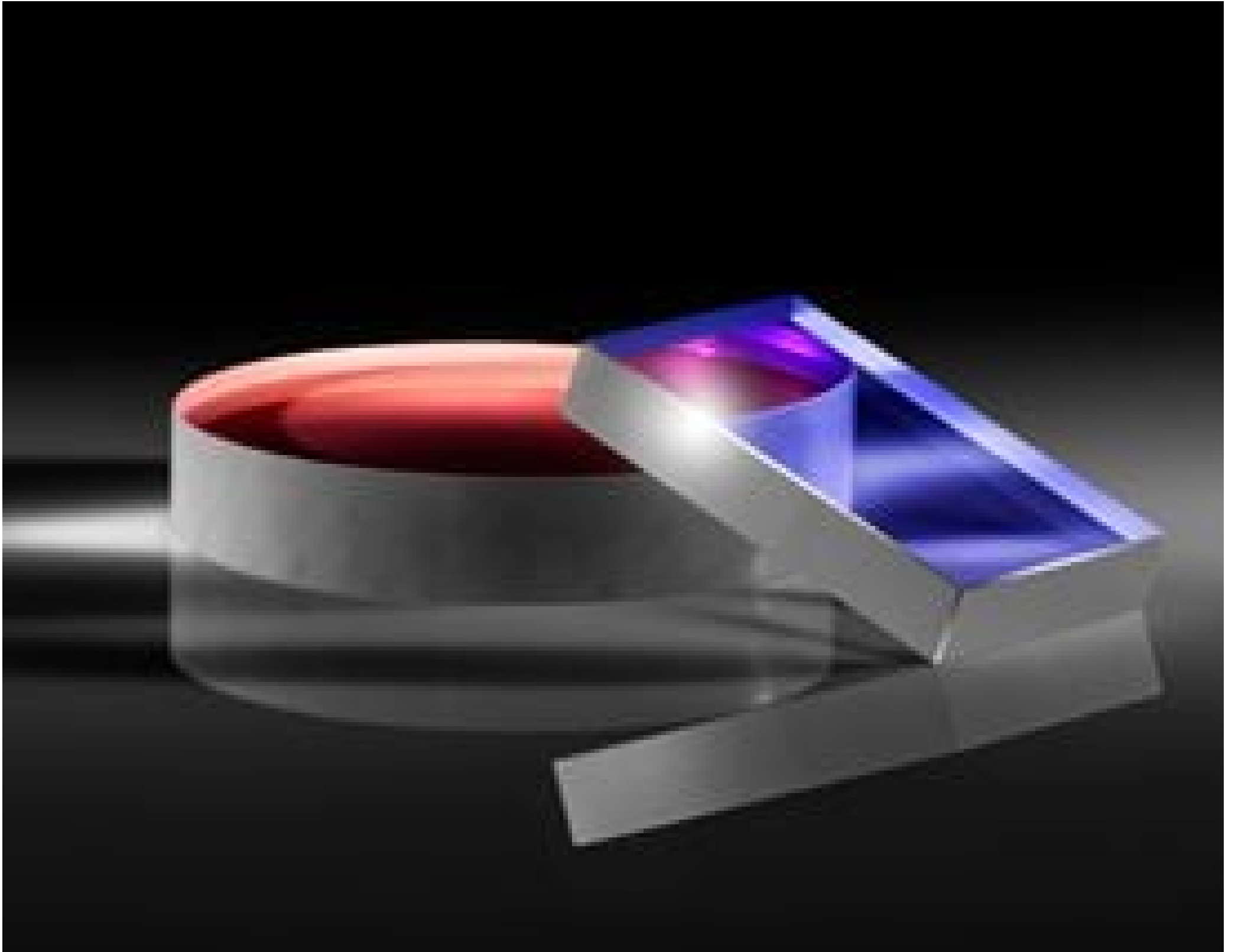


**TECHSPEC® 6.35 x 6.35mm Laser Mirror Substrate**



TECHSPEC® Laser Mirror Substrates

Stock **#37-723** **20+ In Stock**

€96.<sup>00</sup>

**ADD TO CART**

Volume Pricing	
Qty 1-10	€96,00 each
Qty 11-25	€84,00 each
Qty 26-50	€74,00 each
Need More?	<a href="#">Request Quote</a>

Prices shown are exclusive of VAT/local taxes

Product Downloads

**General**

Laser Mirror Substrate **Type:**

**Physical & Mechanical Properties**

<3 **Parallelism (arcmin):**

**Clear Aperture (%):**

Commercial Polish **Back Surface:**

6.35 x 6.35 +0.00/-0.10 **Dimensions (mm):**

3.18 ±0.20 **Thickness (mm):**

5.40 x 5.40 **Clear Aperture CA (mm):**

Ground, protective bevel as needed **Edges:**

## Optical Properties

10-5 **Surface Quality:**

M10 **Surface Flatness (P-V):**

Uncoated **Coating:**

[Fused Silica](#) (Corning 7980) **Substrate:**

## Regulatory Compliance

[Compliant](#) **RoHS 2015:**

[Compliant](#) **Reach 209:**

[View](#) **Certificate of Conformance:**

## Product Details

- M10 and M20 Surface Flatness and 10-5 Surface Quality
- High Quality Fused Silica Substrates
- Imperial Sizes with Circular or Rectangular Geometries
- [Window Substrates](#) Also Available

TECHSPEC® Laser Mirror Substrates are manufactured from high quality fused silica and are designed for use with high power laser sources. These mirrors feature excellent surface specifications, including M10 and M20 surface flatness and 10-5 surface quality, to limit the possibility of reduced performance due to surface defects. The high surface quality of these mirror blanks also makes them ideal for use in demanding intra-cavity laser applications. TECHSPEC Laser Mirror Substrates are available in standard imperial sizes, with either circular or rectangular geometries. Please contact us if your application requires a custom size laser mirror substrate.

## Compatible Mounts