

[All Products](#) / [Optomechanics](#) / [Medium and Large Angle Mirror](#)

[See all 3 Products in Family](#)

6.0" Angle Mirror

Please select your shipping country to view the most accurate inventory information, and to determine the correct Edmund Optics sales office for your order.

Select Your Country/Region: European Union

Submit



6.0" Angle Mirror Mount

1

€487⁰⁰

ADD TO CART

| Volume Pricing | |
|----------------|-------------------------------|
| Qty 1-4 | €487,00 each |
| Qty 5-9 | €429,10 each |
| Qty 10-25 | €395,20 each |
| Need More? | Request Quote |

Prices shown are exclusive of VAT/local taxes

Product Downloads

- STEP:step
- PDF Drawing:pdf
- IGES:igs
- eDrawing:eprt
- EO Spec Sheet
- [Download All](#)

General

| | | | |
|-------------------------------------|-----------------------|------------------------|-----------------------|
| Type: | Adjustable - Tip-Tilt | Type of Optics: | Square or Rectangular |
| Number of Adjustment Screws: | 3 | | |

Physical & Mechanical Properties

| | | | |
|-----------------------------|-----|---|--|
| Weight (lbs): | 4.1 | Construction: | Black Anodized Aluminum, Stainless Steel |
| Fine Tilt Angle (°): | 4 | Resolution (inches): | 0.015 |
| Fine Tip Angle (°): | 4 | Adjustment Screw Pitch (inches): | 0.015 |

Threading & Mounting

| | | | |
|--|----------------------------|--------------------------------------|---------|
| Size of Compatible Optics (mm): | 12.7 - 152.4 | Mounting Plate Size (inches): | 6.0 Sq. |
| Mounting Plate Screw Holes: | (25) 1/4-20 on 1.0" Center | | |

Regulatory Compliance

| | | | |
|------------------------------------|---------------------------|-------------------|---------------------------|
| RoHS 2015: | Compliant | Reach 224: | Compliant |
| Certificate of Conformance: | View | | |

Product Details

- 3.0", 4.5", or 6.0" Square Mounting Surface
- Fine Adjustment Screws (64-Pitch) Allow for Precision Tilting
- Mounting Plate with ¼-20 Threaded Holes

Medium and Large Angle Mirror Mounts are available in aluminum and stainless-steel mounts. Medium and Large Angle Mirror Mounts are available in 3", 4.5", and 6" sizes.

Please select your shipping country to view the most accurate inventory information, and to determine the correct Edmund Optics sales office for your order.

Select Your Country/Region:

Medium and Large Angle Mirror Mounts feature 64-pitch fine adjustment screws, allowing for precision tilting in two directions. Medium and Large Angle Mirror Mounts are available in 3", 4.5", and 6" sizes.

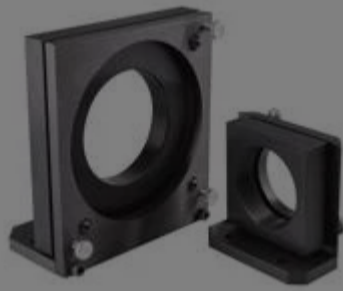
Technical Information

#36-483

Related Products



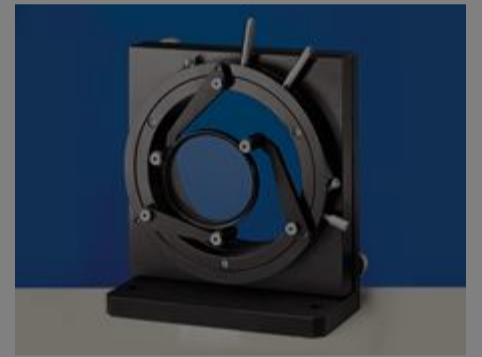
Large Diameter Gimbal Optical Mirror Mounts



Optical Cell Kinematic Mounts

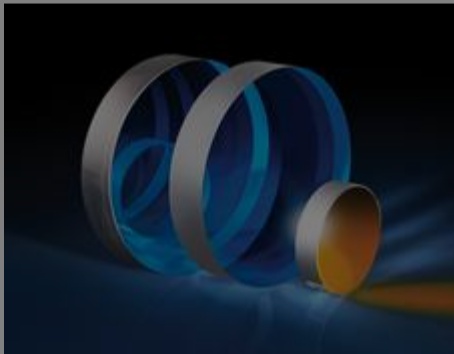


E-Series Kinematic Optical Mirror Mounts



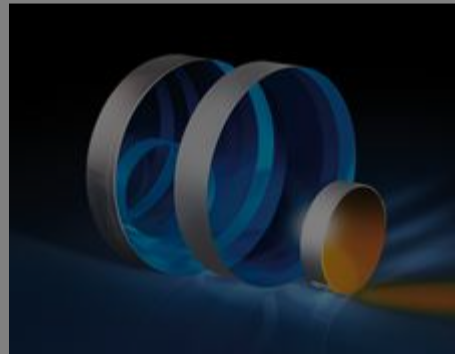
Self-Centering Jaw Clamp and Kinematic Mount

Frequently Purchased Together



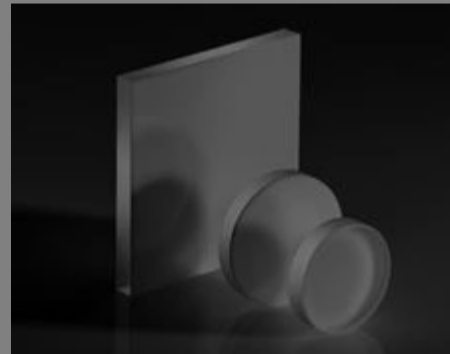
#01-612-522 - 6" Dia. Protected Aluminum, λ/10 Flat Fused Silica
€2,180,00

Qty



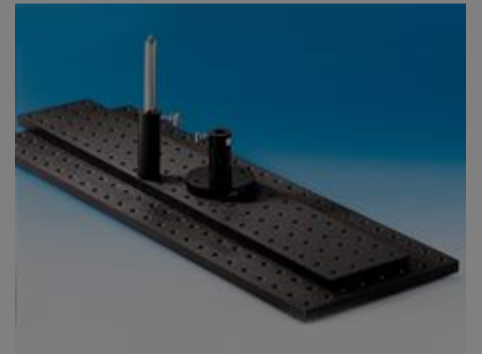
#01-915-522 - 3" Dia. Protected Aluminum, λ/10 Flat Fused Silica
€585,00

Qty



#02-149 - 100 x 125mm Opal Diffusing Glass
€241,00

Qty



#03-642 - 36" x 8", Breadboard
€404,00

Qty



Resources

Media Type

- Application Note
- Video
- FAQ

APPLICATION NOTE

A Closer Look at Kinematic Movement

VIDEO

E-Series Kinematic Optical Mirror Mounts

VIDEO

TECHSPEC® 90° Kinematic Adapter

Glossary

Trending in Optics

▶ VIDEO

? FAQ

GLOSSARY

Gimbal

Please select your shipping country to view the most accurate inventory information, and to determine the correct Edmund Optics sales office for your order.

Select Your Country/Region:

View More