

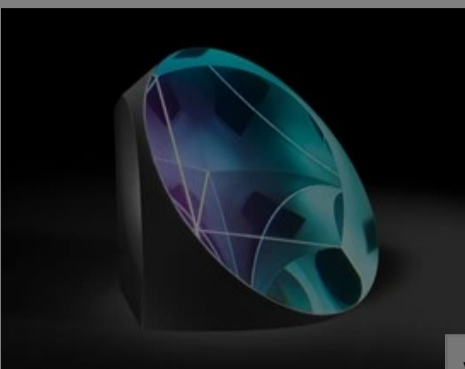
[All Products](#) / [Optics](#) / [Prisms](#) / [N-BK7 Corner Cube Retroreflectors](#)

[See all 32 Products in Family](#)

Please select your shipping country to view the most accurate inventory information, and to determine the correct Edmund Optics sales office for your order.

Select Your Country/Region: European Union

Submit



TECHSPEC® 76.2mm N-BK7 Corner Cube Retroreflectors with Black Overpaint

1

€622⁰⁰

ADD TO CART

Volume Pricing

Qty 1-5 €622,00 each

Qty 6-25 €500,00 each

Qty 26-49 €468,00 each

Need More? [Request Quote](#)

Prices shown are exclusive of VAT/local taxes

Product Downloads

- STEP:step
- Curve:pdf
- PDF Drawing:pdf
- IGES:igs
- eDrawing:eprt
- EO Spec Sheet
- [Download All](#)

General

Type: Retroreflector

Note: Black Overpaint is 30-60µm Thick

Physical & Mechanical Properties

Diameter (mm): 76.20 +0.0/-0.1

Height (mm): 57.15

Bevel: Protective as needed

Clear Aperture (%): 95

Height Tolerance (mm): ±0.25

Optical Properties

Beam Deviation (arcsec): 3

Coating: Silver with protective overcoat (black overpaint)

Substrate: [N-BK7](#)

Surface Quality: 60-40

Image Orientation: Left-Handed

Coating Specification: Reflective Surfaces: R_{abs} > 97% FROM 400 - 2500nm @ 0° AOI R_{avg} > 98% FROM 400 - 2500nm @ 0° AOI

Ray Deviation (°): 180

Wavelength Range (nm): 400 - 2500

Damage Threshold, Reference: Entrance: 0.5 J/cm² @ 532nm

Power (fringes) @ 632.8nm: 0.25

& 1064nm,
10ns

**Irregularity
(fringes) @
632.8nm:** 0.25

Please select your shipping country to view the most accurate inventory information, and to determine the correct Edmund Optics sales office for your order.

Select Your Country/Region:

Regulatory Compliance

Certificate of Conformance: [View](#)

Need different specs or modifications?

Edmund Optics offers comprehensive custom manufacturing services for optical and imaging components tailored to your specific application requirements. Whether in the prototyping phase or preparing for full-scale production, we provide flexible solutions to meet your needs. Our experienced engineers are here to assist—from concept to completion.

Our capabilities include:

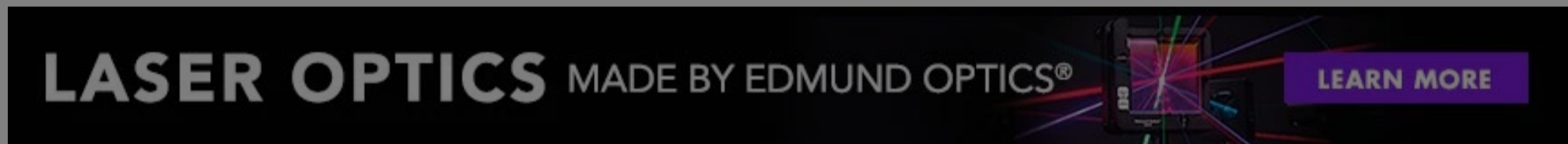
- Custom dimensions, materials, coatings, and more
- High-precision surface quality and flatness
- Tight tolerances and complex geometries
- Scalable production—from prototype to volume

Learn more about our [custom manufacturing capabilities](#) or submit an inquiry [here](#).

Product Details

- Incident Light is Reflected Back to the Source
- Down to 3 Arcsecond Beam Deviation
- Useful for Surveying and Alignment
- Also Available **Mounted**

TECHSPEC® N-BK7 Corner Cube Retroreflectors are designed to reflect any ray or beam entering the prism face, regardless of the orientation of the prism, back onto itself. A mirror will do that only at the normal incidence. As a result, corner cube retroreflectors are useful where precision alignment is impossible or time-consuming. TECHSPEC® N-BK7 Corner Cube Retroreflectors are available with the dihedral surfaces either uncoated or coated with silver. The silver coating provides a larger acceptance angle while the uncoated option, which relies on total internal reflection, provides optimum reflectivity. This coating is covered by a protective black overpaint. Please note, this protective coat increases the diameter of the corner cube retroreflector by 30-60 µm. The input face is available uncoated or coated with an antireflection coating optimized for either visible wavelengths or near infrared wavelengths, including 1064nm and 1550nm.



N-BK7 Corner Cube Retroreflectors provide high-reflectance cube performance with total internal reflection. Ideal for laser alignment, metrology, and interferometry applications requiring consistent optical return paths. Compact, durable, and designed for maximum angular accuracy without the need for precise alignment.

FAQ(s)

What is the benefit of N-BK7 glass in this cube reflector?

N-BK7 offers excellent transmission in the visible to near-infrared range and high durability, making it suitable for a wide range of environments.

Do these retroreflectors require alignment?

No—corner cubes automatically return beams parallel to the input, eliminating the need for precise alignment.

Can these be used in laser-based applications?

Yes, they are commonly used in laser interferometry, alignment systems, and metrology due to their consistent beam return path.

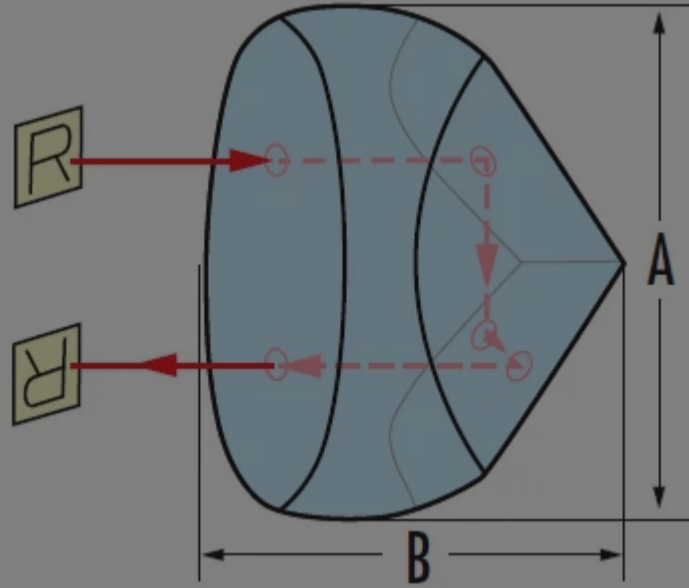
Are AR coatings available?

Yes, Edmund Optics offers both uncoated and broadband AR-coated options to enhance performance across various wavelengths.

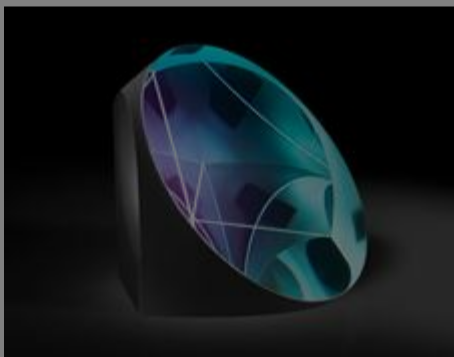
Technical Information

A (mm)	B (mm)	Stock No. Uncoated	Stock No. Silver Coated	Stock No. Silver and VIS 0° Coated	Stock No. Silver and NIR II Coated
7.16	6.1	#65-250	#43-305	#48-605	#12-488
12.7	10.16	#43-296	#45-202	#48-606	#12-489

25.4	19.05	#43-297	#45-187	#48-607	#12-490
38.1	29.21	#43-298	#45-189	#48-608	N/A
50.8	38.1	Please select your shipping country to view the most accurate inventory information, and to determine the correct Edmund Optics sales office for your order.			N/A
63.5	48.26	Select Your Country/Region:			N/A
76.2	57.15				N/A

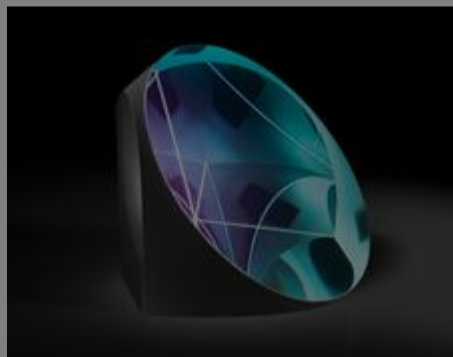


Frequently Purchased Together



#45-187 - 25.4mm Silver Coated, Corner Cube Prism
€323,00

Qty



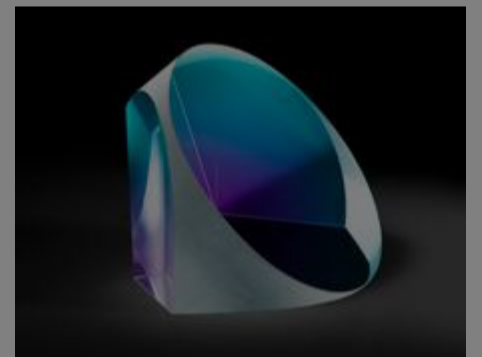
#45-191 - 50.8mm Silver Coated, Corner Cube Prism
€431,00

Qty



#03-676 - 7.0 - 40.0 Optic Height, English Bar-Type Optic Holder
€106,00

Qty



#43-301 - 76.2mm Corner Cube Prism
€551,00

Qty

Resources

Media Type

- Application Note
- Video
- FAQ
- Glossary

APPLICATION NOTE

Anti-Reflection (AR) Coatings

APPLICATION NOTE

An Introduction to Optical Coatings

VIDEO

Optical Prisms Review

FAQ

GLOSSARY

GLOSSARY

I'd like to
adhere two
prisms
together. ho...

Dove Prism

Equilateral
(Dispersing)
Prism

Please select your shipping country to view the most accurate inventory information,
and to determine the correct Edmund Optics sales office for your order.

Select Your Country/Region: