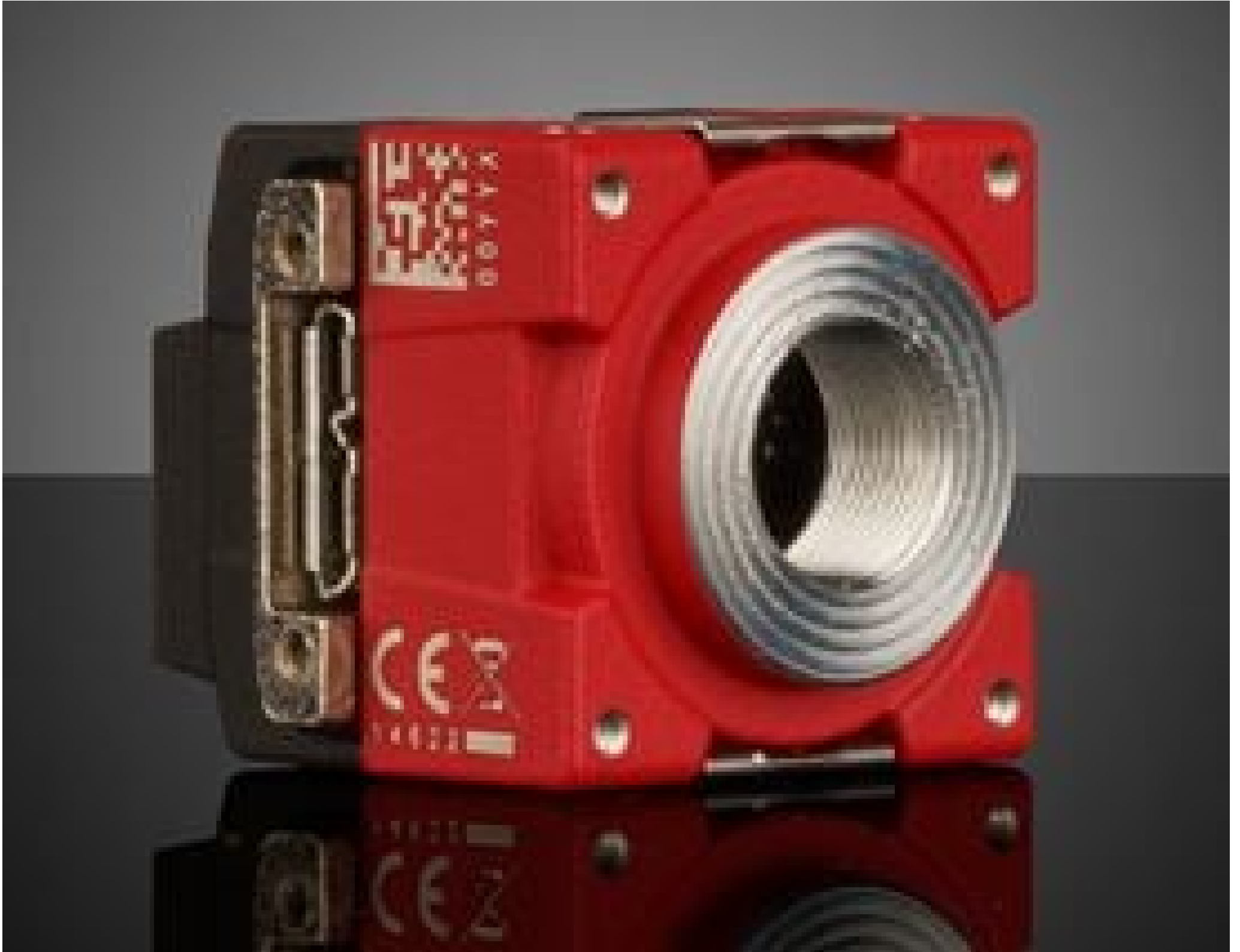


[See all 127 Products in Family](#)

# Allied Vision Alvium 1800 U-510c, 1/1.8" 5.1 S-Mount, Right Angle USB 3.1 Color Camera

See More by [Allied Vision](#)



Stock #26-216 [CONTACT US](#)

⊖ 1 ⊕ €590<sup>00</sup>

**ADD TO CART**

Volume Pricing	
Qty 1+	€590,00 each
Need More?	<a href="#">Request Quote</a>

ⓘ Prices shown are exclusive of VAT/local taxes

## Product Downloads

Color **Spectrum:**

## General

Color Camera **Type:**

Alvium 1800 U-510c **Model Number:**

Allied Vision **Manufacturer:**

Avium Right Angle **Camera Series:**

## Physical & Mechanical Properties

29 x 29 x 33 (includes connectors and lens mount) **Dimensions (mm):**

65 **Weight (g):**

Full **Housing:**

## Sensor

256KB **Image Buffer:**

1/1.8" **Sensor Format:**

5.10 **Resolution (Megapixels):**

79.00 **Frame Rate (fps):**

2,464 x 2,064 **Pixels (H x V):**

2.74 x 2.74 **Pixel Size, H x V (µm):**

6.75 x 5.66 **Sensing Area, H x V (mm):**

Sony IMX548 **Imaging Sensor:**

Progressive Scan CMOS **Type of Sensor:**

Global **Shutter Type:**

12 bit **Pixel Depth:**

14 µs - 10s **Exposure Time:**

+5 to +65 **Dynamic Range (dB):**

USB3 Vision v1.0, GenICam **Machine Vision Standard:**

## Electrical

3.0 **Power Consumption (W):**

## Hardware & Interface Connectivity

USB 3.1 Gen 1 **Interface:**

USB 3.1 Gen 1, Micro-B **Connector:**

Power over USB or via GPIO **Power Supply:**

4 Programmable TTL GPIOs **GPIOs:**

Hardware Trigger (GPIO) or Software Trigger **Synchronization:**

Back Panel **Interface Port Orientation:**

USB3 Vision v1.0, GenICam **GPIO Connector Type:**

## Threading & Mounting

S-Mount (M12 x 0.5) **Mount:**

1/4-20 and M6 with Tripod Mount Adapter [#14-156](#) **Mounting Threads:**

## Environmental & Durability Factors

-20 to +85 **Operating Temperature (°C):**

7-pin JST **Storage Temperature (°C):**

## Regulatory Compliance

[Compliant](#)

RoHS 2015:

[View](#)

Certificate of Conformance:

[Compliant](#)

Reach 240:

## Product Details

- Right Angle USB Port Orientation
- Compact, Low Cost, High Performance Design for Machine Vision and Embedded Applications
- ALVUM® System on Chip (SoC) Technology with Onboard Imaging Preprocessing
- [Allied Vision Avium USB 3.1 Cameras](#) Also Available

Allied Vision Avium Right Angle USB 3.1 Cameras feature ALVUM® System on Chip (SoC) technology and a right-angle USB port in a lightweight compact form factor, offering a comprehensive image processing library for advanced onboard image correction, preprocessing functions to relieve host computer and processor workload, and allow for easy system integration. In addition to smart camera operations, the unique SoC design also allows for low power consumption and ease of integration, making them ideal for next generation machine vision, robotics and embedded vision applications. The cameras feature a variety of popular Sony Pregius and On Semi CMOS sensors with high image quality, fast frame rate and USB3 Vision interface standard. The actively aligned lens mount minimizes inconsistency and variation. Allied Vision Avium Right Angle USB 3.1 Cameras feature a 90° right angle USB port and are available in a variety of monochrome, color, and NIR configurations, including C-Mount, CS-Mount, and S-Mount. Full housing versions are best suited for prototyping, development and end user uses. Partial housing and board level configurations have exposed image sensor PCB without heat sinks to reduce space and facilitate system integration making them ideal for OEM embedded design.

**Note:** Board level versions do not have a lens mount.