

[All Products](#) / [Cameras](#) / [Allied Vision](#) / [Allied Vision Alvium G1 GigE PoE](#)

[See all 62 Products in Family](#)

Allied Vision Alvium G1 GigE PoE Color Camera

t, GigE PoE

See More by [Allied Vision](#)

Please select your shipping country to view the most accurate inventory information, and to determine the correct Edmund Optics sales office for your order.

Select Your Country/Region: European Union

Submit

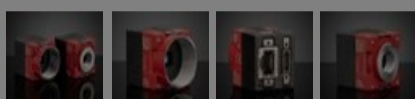


Stock #23-564 **2 In Stock** [Similar Cameras](#)

- 1 +

€1.610^{,00}

ADD TO CART



Volume Pricing	
Qty 1+	€1.610,00 each
Need More?	Request Quote

Prices shown are exclusive of VAT/local taxes

Product Downloads	
	Spec Sheets:pdf
	User Manual:pdf
	EO Spec Sheet Download All

Note: This item requires accessories for use | [Learn More](#)

Spectrum: Color

General

Type: Color Camera

Model Number: Alvium G1-1236c

Manufacturer: Allied Vision

Camera Series: Alvium G1

Physical & Mechanical Properties

Dimensions (mm): 41 x 29 x 29

Weight (g): 65

Housing: Full

Sensor

Image Buffer: 32MB

Sensor Format: 1.1"

Resolution (Megapixels): 12.40

Frame Rate (fps): 9.60

Pixels (H x V): 4,112 x 3,008

Pixel Size, H x V (µm): 3.45 x 3.45

Sensing Area, H x V (mm): 14.2 x 10.4

Imaging Sensor: Sony IMX304

Type of Sensor: Progressive Scan CMOS

Shutter Type: Global

Pixel Depth: 12 bit

Exposure Time: 83µs - 10s

Dynamic Range (dB): Not Specified

Machine Vision Standard: GigE Vision V2.2, GenICam V2.0

Electrical

Power Consumption (W): External power: 3.8 W at 12 VDC | Power over Ethernet: 4.0 W

Please select your shipping country to view the most accurate inventory information, and to determine the correct Edmund Optics sales office for your order.

Select Your Country/Region:

Hardware & Interface Connections

Interface: GigE (PoE)

Screw Locks

Power Supply: PoE, 12 to 24 VDC via GPIO, or with external power supply #23-581

GPIOs: 1 opto-isolated input, 1 opto-isolated output, 2 non-isolated GPIOs

Synchronization: Hardware Trigger (GPIO) or Software Trigger

Interface Port Orientation: Back Panel

GPIO Connector Type: 10-pin TFM

Threading & Mounting

Mount: C-Mount

Mounting Threads: ¼"-20 and M6 with Tripod Mount Adapter [#14-156](#)

Environmental & Durability Factors

Operating Temperature (°C): -20 to +50

Storage Temperature (°C): -20 to +85

Regulatory Compliance

RoHS 2015: [Compliant](#)

Certificate of Conformance: [View](#)

Reach 240: [Compliant](#)

Product Details

- Up to 24.6MP Resolution with Framerates up to 276FPS
- Robust Industrial GigE Vision Interface with PoE
- Onboard Image Processing and Expansive Feature Sets
- Alvium G5 and [Allied Vision Alvium USB 3.1 Cameras](#) Also Available

Allied Vision Alvium G1 GigE PoE Cameras feature a lightweight, compact form factor and combines the advantages of the established GigE Vision standard with the flexibility of the Alvium platform. The ALVIUM® System on Chip (SoC) technology offers a comprehensive image processing library for advanced onboard image correction and preprocessing functions to relieve host computer and processor workload. These cameras feature the latest industrial standard hardware and can easily be integrated into any vision system while ensuring long-term availability and reliability. With precision sensor alignment, enhanced cleanliness, fixed pattern noise correction, and defect pixel correction, resolutions up to 24.6MP and framerates up to 276 FPS are available. Allied Vision Alvium G1 GigE PoE Cameras feature a gigabit ethernet port on the back panel and are available in a variety of monochrome and color options with either C-Mount or S-Mount lens interfaces.

Accessories

Note: Compatible accessories for individual stock numbers may vary. If unsure about which accessories work with your products, please contact us [here](#).

	Title	Compare	Stock Number	Price	Buy
MORE+	Power Over Ethernet (PoE) Single Port injector		#68-469	€66,00 Request Quote	2 In Stock <input type="text" value="1"/>
MORE+	Allied Vision Cat6 1G/5GigE Locking Cable, 3m		#23-575	€20,00 Request Quote	9 In Stock <input type="text" value="1"/>

	Title	Compare	Stock Number	Price	Buy
MORE+	Allied Vision Cat6 1G/5GigE Locking Cable, 5m		#23-576	€30,00	5 In Stock <input type="text" value="1"/>
MORE+	Allied Vision Cat6 1G/5GigE Locking Cable, 10m				4 In Stock <input type="text" value="1"/>
MORE+	Allied Vision Alvium G1/G5 GPIO Cable, 3m			Request Quote	10 In Stock <input type="text" value="1"/>
MORE+	Allied Vision Alvium G1/G5 GPIO Cable, 5m		#23-579	€40,00 Request Quote	3 In Stock <input type="text" value="1"/>
MORE+	Allied Vision Alvium G1/G5 GPIO Cable, 10m		#23-580	€63,00 Request Quote	2 In Stock <input type="text" value="1"/>
MORE+	Allied Vision Alvium G1/G5 Power Supply		#23-581	€91,00 Request Quote	3 In Stock <input type="text" value="1"/>
MORE+	Allied Vision Alvium G1/G5 Heatsink, Set of 2		#23-643	€46,00 Request Quote	CONTACT US <input type="text" value="1"/>

Please select your shipping country to view the most accurate inventory information, and to determine the correct Edmund Optics sales office for your order.

Select Your Country/Region:

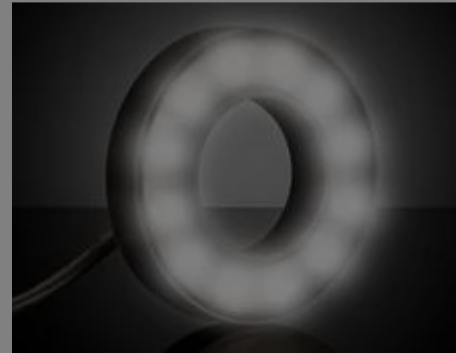
Related Products



Allied Vision Alvium USB 3.0 Cameras



Imaging Lenses



Machine Vision Lighting

Imaging Lens Selector

Imaging

- Factory Automation
- Telecentric
- M12

- Custom Sensor
- Camera Model

Camera Model:

Number of Horizontal Pixels:

1

Number of Vertical Pixels:

2

Pixel Size (µm):

3

Working Distance (mm):

4

Please select your shipping country to view the most accurate inventory information, and to determine the correct Edmund Optics sales office for your order.

Select Your Country/Region:

Horizontal Field of View (mm):

5

✓

Disclaimer: Values represent theoretical values from lens design software. Actual lens performance varies due to manufacturing tolerances.

Frequently Purchased Together



#54-341 - Nikon F-Mount Lens to C-Mount Camera Adapter
€85,00

Qty



#86-570 - 12mm Focal Length, HP Series Fixed Focal Length Lens
€725,00

Qty



#86-571 - 16mm Focal Length, HP Series Fixed Focal Length Lens
€725,00

Qty



#14-113 - 25mm Focal Length Lens, 1.1" Sensor Format
€1.031,00

Qty

Resources

Media Type

- Glossary
- Technical Tool
- Application Note
- Video
- Published Article
- FAQ

GLOSSARY

Image Capture Board (Frame Grabber)

TECHNICAL TOOL

Imaging System Parameter Calculator

TECHNICAL TOOL

Imaging Lens Selector

APPLICATION NOTE

What is Imagina?

VIDEO

Edmund Optics Imaging Lab 1.1: Field of...

VIDEO

Edmund Optics Imaging Lab 1.2: Working...

Please select your shipping country to view the most accurate inventory information, and to determine the correct Edmund Optics sales office for your order.

Select Your Country/Region: