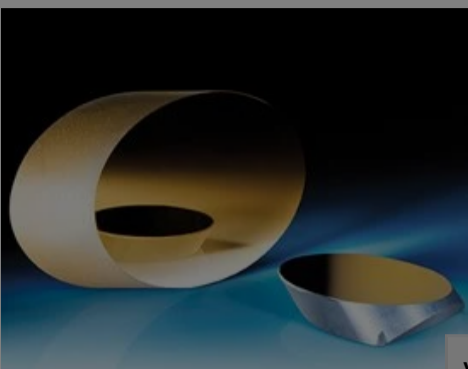


[All Products](#) / [Optics](#) / [Optical Mirrors](#) / [λ/8 Precision Elliptical Flat Mirrors](#)

[See all 54 Products in Family](#)

**TECHSPEC® Elliptical Flat Mirror**



Please select your shipping country to view the most accurate inventory information, and to determine the correct Edmund Optics sales office for your order.

Select Your Country/Region: European Union

Submit

1

€640<sup>00</sup>

ADD TO CART

Volume Pricing

Qty 1-5	€640,00 each
Qty 6-25	€510,00 each
Qty 26-49	€479,00 each

Need More? [Request Quote](#)

Prices shown are exclusive of VAT/local taxes

Product Downloads

- STEP:step
- Curve:pdf
- PDF Drawing:pdf
- IGES:igs
- Zemax:zar
- Zemax:zmx
- eDrawing:eprt
- Code V:seq
- EO Spec Sheet
- [Download All](#)

General

Type: Flat Mirror

Note: Flatness specification is Peak to Valley

Physical & Mechanical Properties

Thickness Tolerance (inches): ±0.060

Thickness (mm): 19.05 ±1.52

Clear Aperture CA (mm): 68.58 (Minor Axis)  
97.00 (Major Axis)

Dimensional Tolerance (inches): ±0.020

Dimensional Tolerance (mm): ±0.50

Major Axis (mm): 107.77

Minor Axis (mm): 76.20

Optical Properties

Wavelength Range (µm): 0.7 - 10

Coating Type: Metal

Coating: Protected Gold (700-10000nm)

Surface Flatness (P-V): λ/8

Wavelength Range (nm): 700 - 10000

Substrate: [i](#) BOROFLOAT®

Coating Specification: R<sub>avg</sub> >96% @ 700 - 2000nm  
R<sub>avg</sub> >96% @ 2000 - 10,000nm

Surface Quality: 60-40

**Damage Threshold, Reference:** 0.8 J/cm<sup>2</sup> @ 1064nm, 10ns ⓘ

## Regulatory Compliance

RoHS 2015: **Compliant**

Reach 247: **Compliant**

Please select your shipping country to view the most accurate inventory information, and to determine the correct Edmund Optics sales office for your order.

**Select Your Country/Region:**

## Need different specs or modifications?

Edmund Optics offers comprehensive custom manufacturing services for optical and imaging components tailored to your specific application requirements. Whether in the prototyping phase or preparing for full-scale production, we provide flexible solutions to meet your needs. Our experienced engineers are here to assist—from concept to completion.

Our capabilities include:

- Custom dimensions, materials, coatings, and more
- High-precision surface quality and flatness
- Tight tolerances and complex geometries
- Scalable production—from prototype to volume

Learn more about our [custom manufacturing capabilities](#) or submit an inquiry [here](#).

## Product Details

See Figure B in Technical Information tab for dimensional diagram.

- Circular Profile When Oriented at 45°
- Ideal for Redirecting Light
- Multiple Sizes and Coatings Offered

TECHSPEC® λ/8 Precision Elliptical Flat Mirrors are ideal for research and astronomical applications. Because of their elongated major axis, they are suited to bending and folding light at precise angles with minimum wavefront distortion. These mirrors have a circular profile when they are oriented at 45°. TECHSPEC® λ/8 Precision Elliptical Flat Mirrors feature a BOROFLOAT® substrate. Multiple sizes and coating options are offered to best suit a wide range of applications.

## Technical Information

Fig.	Minor Axis (mm)	Major Axis (mm)	Thickness (mm)	Stock No.					
				Uncoated	Protected Aluminum	UV Enhanced Aluminum	Enhanced Aluminum	Protected Gold	Protected Silver
B	12.70	17.96	3.81	<a href="#">#32-270</a>	<a href="#">#32-271</a>	<a href="#">#43-573</a>	<a href="#">#32-272</a>	<a href="#">#32-273</a>	<a href="#">#89-454</a>
B	22.23	31.42	6.35	<a href="#">#32-093</a>	<a href="#">#30-836</a>	<a href="#">#43-574</a>	<a href="#">#32-131</a>	<a href="#">#32-085</a>	<a href="#">#89-455</a>
B	26.97	38.15	6.35	<a href="#">#32-094</a>	<a href="#">#30-837</a>	<a href="#">#43-575</a>	<a href="#">#32-132</a>	<a href="#">#32-086</a>	<a href="#">#89-456</a>
A	31.75	44.91	9.53	<a href="#">#32-095</a>	<a href="#">#30-205</a>	<a href="#">#43-576</a>	<a href="#">#32-133</a>	<a href="#">#32-087</a>	<a href="#">#89-457</a>
A	38.10	53.87	9.53	<a href="#">#32-096</a>	<a href="#">#30-258</a>	<a href="#">#43-577</a>	<a href="#">#32-134</a>	<a href="#">#32-088</a>	<a href="#">#89-458</a>
A	47.63	67.36	11.68	<a href="#">#32-097</a>	<a href="#">#30-840</a>	<a href="#">#43-578</a>	<a href="#">#32-135</a>	<a href="#">#32-089</a>	<a href="#">#89-459</a>
B	57.15	80.82	15.88	<a href="#">#32-098</a>	<a href="#">#41-131</a>	<a href="#">#43-579</a>	<a href="#">#32-136</a>	<a href="#">#32-090</a>	<a href="#">#89-460</a>
B	66.68	94.28	15.88	<a href="#">#32-099</a>	<a href="#">#42-583</a>	<a href="#">#43-580</a>	<a href="#">#32-137</a>	<a href="#">#32-091</a>	<a href="#">#89-461</a>
B	76.20	107.77	19.05	<a href="#">#32-100</a>	<a href="#">#42-584</a>	<a href="#">#43-581</a>	<a href="#">#32-138</a>	<a href="#">#32-092</a>	<a href="#">#89-462</a>

## Related Products



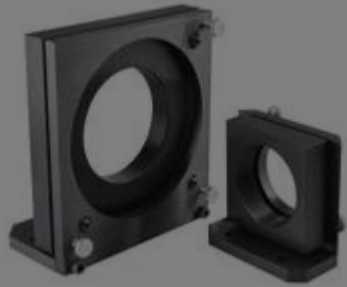
Optical Mirror Mounts



Elliptical Plate Beamsplitters

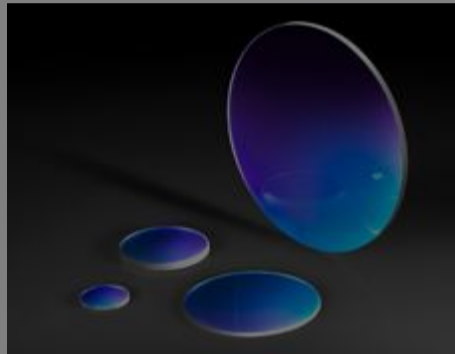
Please select your shipping country to view the most accurate inventory information, and to determine the correct Edmund Optics sales office for your order.  
**Select Your Country/Region:**

### Frequently Purchased Together



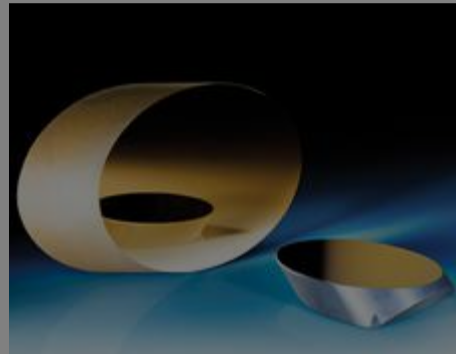
#36-476 - 203.2mm/8.0" Optic Dia.,  
Optical Cell Kinematic Mount  
€3.280,00

Qty



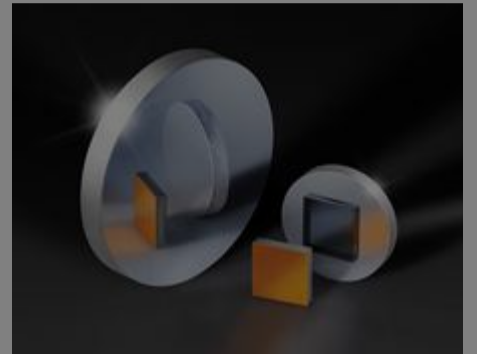
#43-366 - 10mm Dia., 1mm Thick,  
Uncoated, Sapphire Window  
€43,00

Qty



#32-138 - Elliptical Mirror 76.2mm  
Minor Axis Enhanced Aluminum  
€550,00

Qty



#34-374 - 20mm Dia Protected  
Gold, λ/20 Mirror  
€196,00

Qty

## Resources

#### Media Type

- Application Note
- Video
- FAQ
- Glossary

#### CASE STUDIES

Using IR Spectroscopy for Counterfeit Drug Detection

#### APPLICATION NOTE

Roughness of Diamond Turned Off-Axis Parabolic

#### APPLICATION NOTE

Off-Axis Parabolic Mirror Selection...

#### VIDEO

Compound Parabolic Concentrators Review

#### ? FAQ

I would like to use your Off-Axis Mirror in a laser...

#### ? FAQ

How are your Off-Axis Parabolic Metal Mirrors...

[View More](#)

Please select your shipping country to view the most accurate inventory information, and to determine the correct Edmund Optics sales office for your order.

**Select Your Country/Region:**