

[All Products](#) / [Imaging Lenses](#) / [Fixed Focal Length Lenses](#) / [Cx Series Fixed Focal Length Lenses](#)

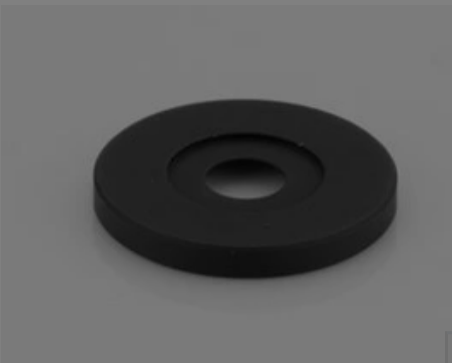
[See all 82 Products in Family](#)

Please select your shipping country to view the most accurate inventory information, and to determine the correct Edmund Optics sales office for your order.

Select Your Country/Region: European Union

Submit

TECHSPEC® f/11 Aperture



1

€11^{,50}

ADD TO CART

Aperture for Cx Lens (representative photo). Aperture varies by stock number. View PDF drawing for additional information.

Volume Pricing	
Qty 1+	€11,50 each
Need More?	Request Quote

Prices shown are exclusive of VAT/local taxes

Product Downloads

- Start Up Guide:pdf
- STEP:step PDF Drawing:pdf
- IGES:igs Zemax
- eDrawing:eprt

General

Type: Lens Accessory

Physical & Mechanical Properties

Outer Diameter (mm): 21

Thickness (mm): 5.45

Optical Properties

Lens Wavelength Range: VIS

Regulatory Compliance

RoHS 2015: **Compliant**

Reach 223: **Compliant**

Certificate of Conformance: [View](#)

Product Details

- Up to 2/3", C-Mount Lens
- Up to 7.5 MegaPixels, 2.8µm Pixel Size Sensors
- Flexible (Cx) Version of our C Series Lenses with Interchangeable Apertures, Filters and Liquid Lens
- 12mm to 50mm Focal Length

TECHSPEC® Cx Series Fixed Focal Length Lenses are designed with simplicity and versatility to easily integrate into a range of application types. The modular 3-piece design allows for flexibility to integrate precision fixed apertures, internal filter holders, or liquid lenses into the assembly. These lenses also feature a simplified focus mechanism with easy to use lock nut and recessed set screws to lock focus position into place. The Cx Series lenses are ideal for applications such as machine vision, **factory automation**, and research and development. For further documentation information or questions regarding ease of assembly and design support, please review our quick start guides, the lens manual or contact technical support.

These lenses won the Silver Level 2016 Innovators Award and the **2nd place 2017 Inspect Award**.

Note: One accessory is required for use with the Cx Series lenses. Accessories available include apertures, filter holders, or liquid lens holders. The liquid lens holders are compatible with our **Variable Focus Liquid Lenses**.

Edmund Optics has created a family of high performance optical designs (the C Series family) and developed 6 customized optomechanical solutions targeted for specific applications. These lens sub-families utilize the same optics as the C Series lenses providing the same optical performance in a variety of optomechanical solutions to meet your application requirements:

- C Series:** Features locking cam focus and iris adjustment and is the most adjustable version of these optical designs; they are the typical high quality machine vision lenses. Also available with a **VIS-NIR Broadband Anti-Reflection (BBAR) Coating**.
- Ci Series:** Simplified mechanics featuring fixed apertures with compact housing. **Industrial Ruggedization** for reduced size, cost, and locked focus.

- **Cr Series:** All optics glued in place and a locking C-clamp focus ring. **Stabilized Ruggedization** for reduced pixel shift and improved focus stability.
- Cx Series: Modular, flexible mechanics allows lenses to be taken apart for easy integration of accessories such as liquid lenses, apertures, and more.
- **Liquid Lens Cx Series:** Designed with an integrated liquid lens for quick autofocus.
- **Cw Series:** Waterproof, designed to meet IEC **Ingress Protection** Code IPX7 and IPX9K.

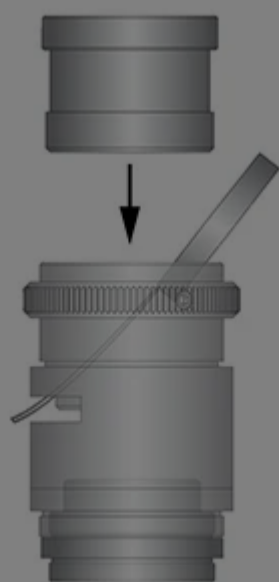
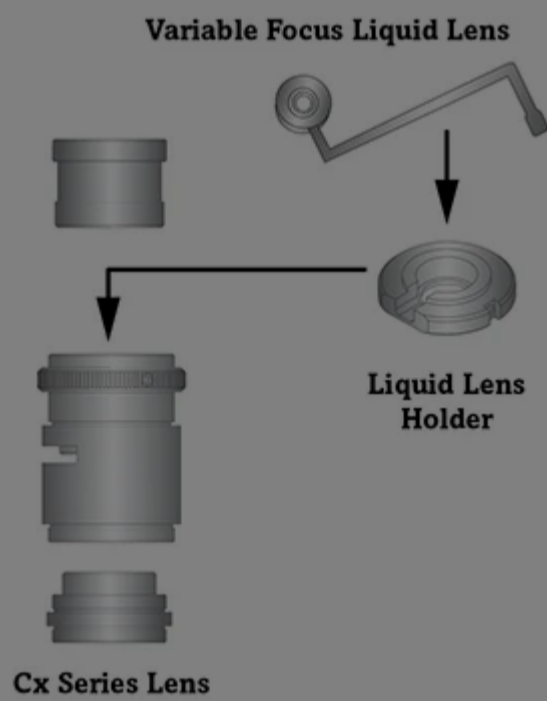
Please select your shipping country to view the most accurate inventory information, and to determine the correct Edmund Optics sales office for your order.

Select Your Country/Region:

	12mm	16mm	25mm	35mm	35mm	50mm
Compatible Liquid Lens	A-25H0	A-25H0	A-25H0	A-25H0	A-39N0	A-39N0
Compatible Liquid Lens Stock No.	#34-282	#34-282	#34-282	#34-282	#34-283	#34-283
Compatible Liquid Lens Development Kit	#34-284	#34-284	#34-284	#34-284	#34-285	#34-285
Liquid Lens Holder Stock No.	#33-631	#33-645	#33-660	#33-675	#33-674	#33-686

Integrating Liquid Lenses into Cx Lenses

Step 1: Choose the focal length of the Cx Lens and the compatible Variable Focus Liquid Lens and Liquid Lens Holder. Or simply choose appropriate Cx Lens Kit, which includes a Cx lens and its compatible Variable Focus Liquid Lens and Liquid Lens Holder.



Step 2: Mount the Variable Focus Liquid Lens into the Liquid Lens Holder. Next, assemble both items into the middle of the Cx Lens. [Complete instructions can be found in the downloadable PDF manual.](#)

Step 3, Option 1: Attach Liquid Lens to a **Pixel 2** **USB 3.0 Autofocus Camera**. This camera provides seamless integration - both driver and autofocus software is included.



Step 3, Option 2: Use with standard C-Mount camera. Driver is not included and a separate Liquid Lens driver must be purchased separately (included in Liquid Lens Development Kit).



Please select your shipping country to view the most accurate inventory information, and to determine the correct Edmund Optics sales office for your order.

Select Your Country/Region:

Accessories

Note: Compatible accessories for individual stock numbers may vary. If unsure about which accessories work with your products, please contact us [here](#).

	Title	Compare	Stock Number	Price	Buy
MORE+	Cx Lens Spanner Wrench		#35-029	€11,50 Request Quote	9 In Stock <input type="text" value="1"/>
MORE+	Liquid Lens Holder for 12mm Cx Lens		#33-631	€35,75 Request Quote	5 In Stock <input type="text" value="1"/>
MORE+	Liquid Lens Holder for 16mm Cx Lens		#33-645	€35,75 Request Quote	12 In Stock <input type="text" value="1"/>
MORE+	Liquid Lens Holder for 25mm Cx Lens		#33-660	€35,75 Request Quote	20+ In Stock <input type="text" value="1"/>
MORE+	Liquid Lens Holder for 35mm Cx Lens		#33-674	€35,75 Request Quote	12 In Stock <input type="text" value="1"/>
MORE+	Small Liquid Lens Holder for 35mm Cx Lens		#33-675	€35,75 Request Quote	20+ In Stock <input type="text" value="1"/>
MORE+	Liquid Lens Holder for 50mm Cx Lens		#33-686	€35,75 Request Quote	2 In Stock <input type="text" value="1"/>
MORE+	f/1.8 Filter Holder for 12mm Cx Lens		#33-594	€36,75 Request Quote	4 In Stock <input type="text" value="1"/>
MORE+	f/2.8 Filter Holder for 12mm Cx lens		#33-595	€36,75 Request Quote	2 In Stock <input type="text" value="1"/>
MORE+	f/4.0 Filter Holder for 12mm Cx Lens		#33-596	€36,75 Request Quote	4 In Stock <input type="text" value="1"/>
MORE+	f/5.6 Filter Holder for 12mm Cx Lens		#33-597	€36,75 Request Quote	4 In Stock <input type="text" value="1"/>

	Title	Compare	Stock Number	Price	Buy
MORE+	f/8.0 Filter Holder for 12mm Cx Lens		#33-598	€36,75 Request Quote	5 In Stock <input type="text" value="1"/>
MORE+	f/11.0 Filter Holder for 12mm Cx Lens		#33-599	€36,75 Request Quote	5 In Stock <input type="text" value="1"/>
MORE+	f/16.0 Filter Holder for 12mm Cx Lens		#33-600	€36,75 Request Quote	4 In Stock <input type="text" value="1"/>
MORE+	f/1.8 Filter Holder for 16mm Cx Lens		#33-601	€36,75 Request Quote	5 In Stock <input type="text" value="1"/>
MORE+	f/2.8 Filter Holder for 16mm Cx lens		#33-602	€36,75 Request Quote	6 In Stock <input type="text" value="1"/>
MORE+	f/4.0 Filter Holder for 16mm Cx Lens		#33-603	€36,75 Request Quote	3 In Stock <input type="text" value="1"/>
MORE+	f/5.6 Filter Holder for 16mm Cx Lens		#33-604	€36,75 Request Quote	2 In Stock <input type="text" value="1"/>
MORE+	f/8.0 Filter Holder for 16mm Cx Lens		#33-605	€36,75 Request Quote	5 In Stock <input type="text" value="1"/>
MORE+	f/11.0 Filter Holder for 16mm Cx Lens		#33-606	€36,75 Request Quote	4 In Stock <input type="text" value="1"/>
MORE+	f/16.0 Filter Holder for 16mm Cx Lens		#33-607	€36,75 Request Quote	4 In Stock <input type="text" value="1"/>
MORE+	f/1.8 Filter Holder for 25mm Cx Lens		#33-608	€36,75 Request Quote	3 In Stock <input type="text" value="1"/>
MORE+	f/2.8 Filter Holder for 25mm Cx Lens		#33-609	€36,75 Request Quote	2 In Stock <input type="text" value="1"/>
MORE+	f/4.0 Filter Holder for 25mm Cx Lens		#33-610	€36,75 Request Quote	5 In Stock <input type="text" value="1"/>
MORE+	f/5.6 Filter Holder for 25mm Cx Lens		#33-611	€36,75 Request Quote	2 In Stock <input type="text" value="1"/>
MORE+	f/8.0 Filter Holder for 25mm Cx Lens		#33-612	€36,75 Request Quote	2 In Stock <input type="text" value="1"/>
MORE+	f/11.0 Filter Holder for 25mm Cx Lens		#33-613	€36,75 Request Quote	5 In Stock <input type="text" value="1"/>
MORE+	f/16.0 Filter Holder for 25mm Cx Lens		#33-614	€36,75 Request Quote	5 In Stock <input type="text" value="1"/>
MORE+	f/2.8 Filter Holder for 35mm Cx Lens		#33-615	€36,75 Request Quote	4 In Stock <input type="text" value="1"/>
MORE+	f/4.0 Filter Holder for 35mm Cx Lens		#33-616	€36,75 Request Quote	6 In Stock <input type="text" value="1"/>
MORE+	f/5.6 Filter Holder for 35mm Cx Lens		#33-617	€36,75 Request Quote	5 In Stock <input type="text" value="1"/>
MORE+	f/8.0 Filter Holder for 35mm Cx Lens		#33-618	€36,75 Request Quote	5 In Stock <input type="text" value="1"/>
MORE+	f/11.0 Filter Holder for 35mm Cx Lens		#33-619	€36,75 Request Quote	5 In Stock <input type="text" value="1"/>
MORE+	f/16.0 Filter Holder for 35mm Cx Lens		#33-620	€36,75 Request Quote	6 In Stock <input type="text" value="1"/>
MORE+	f/2.8 Filter Holder for 50mm Cx Lens		#33-689	€36,75 Request Quote	9 In Stock <input type="text" value="1"/>
MORE+	f/4.0 Filter Holder for 50mm Cx Lens		#33-690	€36,75 Request Quote	CONTACT US <input type="text" value="1"/>

Please select your shipping country to view the most accurate inventory information, and to determine the correct Edmund Optics sales office for your order.

Select Your Country/Region:

	Title	Compare	Stock Number	Price	Buy
MORE+	f/5.6 Filter Holder for 50mm Cx Lens		#33-691	€36,75	CONTACT US 1
MORE+	f/8.0 Filter Holder for 50mm Cx Lens		#33-692	€36,75	CONTACT US 1
MORE+	f/11 Filter Holder for 50mm Cx Lens		#33-693	Request Quote	1 In Stock 1
MORE+	f/16 Filter Holder for 50mm Cx Lens		#33-694	€36,75 Request Quote	CONTACT US 1
MORE+	f/1.8 Aperture for 12mm Cx Lens		#33-624	€11,50 Request Quote	20+ In Stock 1
MORE+	f/2.8 Aperture for 12mm Cx Lens		#33-625	€11,50 Request Quote	20+ In Stock 1
MORE+	f/4.0 Aperture for 12mm Cx Lens		#33-626	€11,50 Request Quote	6 In Stock 1
MORE+	f/5.6 Aperture for 12mm Cx Lens		#33-627	€11,50 Request Quote	3 In Stock 1
MORE+	f/8.0 Aperture for 12mm Cx Lens		#33-628	€11,50 Request Quote	1 In Stock 1
MORE+	f/11.0 Aperture for 12mm Cx Lens		#33-629	€11,50 Request Quote	2 In Stock 1
MORE+	f/16.0 Aperture for 12mm Cx Lens		#33-630	€11,50 Request Quote	5 In Stock 1
MORE+	f/1.5 Aperture for 16mm Cx Lens		#33-637	€11,50 Request Quote	4 In Stock 1
MORE+	f/1.8 Aperture for 16mm Cx Lens		#33-638	€11,50 Request Quote	1 In Stock 1
MORE+	f/2.8 Aperture for 16mm Cx Lens		#33-639	€11,50 Request Quote	5 In Stock 1
MORE+	f/4.0 Aperture for 16mm Cx Lens		#33-640	€11,50 Request Quote	1 In Stock 1
MORE+	f/5.6 Aperture for 16mm Cx Lens		#33-641	€11,50 Request Quote	3 In Stock 1
MORE+	f/8.0 Aperture for 16mm Cx Lens		#33-642	€11,50 Request Quote	1 In Stock 1
MORE+	f/11.0 Aperture for 16mm Cx Lens		#33-643	€11,50 Request Quote	1 In Stock 1
MORE+	f/16.0 Aperture for 16mm Cx Lens		#33-644	€11,50 Request Quote	1 In Stock 1
MORE+	f/1.8 Aperture for 25mm Cx Lens		#33-653	€11,50 Request Quote	2 In Stock 1
MORE+	f/2.8 Aperture for 25mm Cx Lens		#33-654	€11,50 Request Quote	2 In Stock 1
MORE+	f/4.0 Aperture for 25mm Cx Lens		#33-655	€11,50 Request Quote	2 In Stock 1
MORE+	f/5.6 Aperture for 25mm Cx Lens		#33-656	€11,50 Request Quote	2 In Stock 1
MORE+	f/8.0 Aperture for 25mm Cx Lens		#33-657	€11,50 Request Quote	CONTACT US 1
MORE+	f/11.0 Aperture for 25mm Cx Lens		#33-658	€11,50 Request Quote	2 In Stock 1

Please select your shipping country to view the most accurate inventory information, and to determine the correct Edmund Optics sales office for your order.

Select Your Country/Region:

	Title	Compare	Stock Number	Price	Buy
MORE+	f/16.0 Aperture for 25mm Cx Lens		#33-659	€11,50	2 In Stock <input type="text" value="1"/>
MORE+	f/1.65 Aperture for 35mm Cx Lens		#33-660	€11,50	2 In Stock <input type="text" value="1"/>
MORE+	f/1.8 Aperture for 35mm Cx Lens		#33-661	Request Quote	5 In Stock <input type="text" value="1"/>
MORE+	f/2.8 Aperture for 35mm Cx Lens		#33-668	€11,50 Request Quote	5 In Stock <input type="text" value="1"/>
MORE+	f/4.0 Aperture for 35mm Cx Lens		#33-669	€11,50 Request Quote	4 In Stock <input type="text" value="1"/>
MORE+	f/5.6 Aperture for 35mm Cx Lens		#33-670	€11,50 Request Quote	5 In Stock <input type="text" value="1"/>
MORE+	f/8.0 Aperture for 35mm Cx Lens		#33-671	€11,50 Request Quote	5 In Stock <input type="text" value="1"/>
MORE+	f/11.0 Aperture for 35mm Cx Lens		#33-672	€11,50 Request Quote	5 In Stock <input type="text" value="1"/>
MORE+	f/16.0 Aperture for 35mm Cx Lens		#33-673	€11,50 Request Quote	2 In Stock <input type="text" value="1"/>
MORE+	f/2.0 Aperture for 50mm Cx Lens		#33-679	€11,50 Request Quote	2 In Stock <input type="text" value="1"/>
MORE+	f/2.8 Aperture for 50mm Cx Lens		#33-680	€11,50 Request Quote	2 In Stock <input type="text" value="1"/>
MORE+	f/4.0 Aperture for 50mm Cx Lens		#33-681	€11,50 Request Quote	2 In Stock <input type="text" value="1"/>
MORE+	f/5.6 Aperture for 50mm Cx Lens		#33-682	€11,50 Request Quote	2 In Stock <input type="text" value="1"/>
MORE+	f/8.0 Aperture for 50mm Cx Lens		#33-683	€11,50 Request Quote	2 In Stock <input type="text" value="1"/>
MORE+	f/11 Aperture for 50mm Cx Lens		#33-684	€11,50 Request Quote	2 In Stock <input type="text" value="1"/>
MORE+	f/16 Aperture for 50mm Cx Lens		#33-685	€11,50 Request Quote	5 In Stock <input type="text" value="1"/>

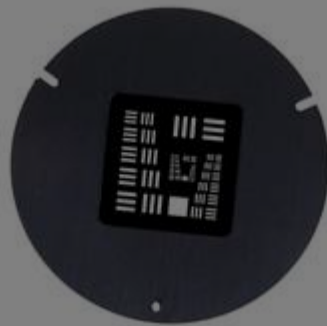
Please select your shipping country to view the most accurate inventory information, and to determine the correct Edmund Optics sales office for your order.

Select Your Country/Region:

Frequently Purchased Together



#35-029 - Cx Lens Spanner Wrench
€11,50



#58-402 - Clear Optical Path USAF Target 38mm Dia.
€1.125,00



#65-800 - M25.5 x 0.5 Mount for 25mm Diameter Filters
€60,00



#34-283 - 3.9mm CA, A-39N0-P04 Corning® Varioptic® Variable Focus Liquid Lens, Packaged A-Series
€172,95

Resources

Please select your shipping country to view the most accurate inventory information, and to determine the correct Edmund Optics sales office for your order.

Select Your Country/Region:

Media Type

- Application Note
- Video
- Trending in Optics
- Published Article
- FAQ
- Glossary
- Technical Tool



[View More](#)