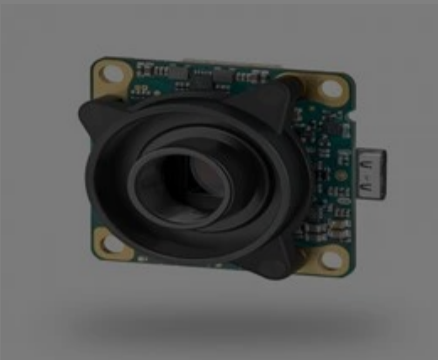


[All Products](#) / [Cameras](#) / [USB Cameras](#)

[See all 33 Products in Family](#)

IDS U3-3271LE-C-HQ

See More by [IDS Imaging Development Systems](#)



IDS Imaging uEye LE Camera (M12, Board Level, Front View)



Please select your shipping country to view the most accurate inventory information, and to determine the correct Edmund Optics sales office for your order.

Select Your Country/Region: European Union

Submit

1

€505^{,00}

ADD TO CART

Volume Pricing

Qty 1+ €505,00 each

Need More? [Request Quote](#)

Prices shown are exclusive of VAT/local taxes

Product Downloads

- Spec Sheets:pdf
- User Manual Software
- EO Spec Sheet

Spectrum: Color

General

Type: Color Camera

Model Number: U3-3271LE-C-HQ

Manufacturer: IDS Imaging Development Systems

Camera Series: uEye+ LE

Physical & Mechanical Properties

Dimensions (mm): 36 x 36 x 19.9 (excludes connectors and lens mount)

Weight (g): 16

Housing: Board Level

Sensor

Image Buffer: Not Specified

Sensor Format: 1/1.8"

Resolution (Megapixels): 3.10

Frame Rate (fps): 58.00

Pixels (H x V): 2,056 x 1,542

Pixel Size, H x V (µm): 3.45 x 3.45

Sensing Area, H x V (mm): 7.093 x 5.32

Imaging Sensor: Sony IMX265

Type of Sensor: Progressive Scan CMOS

Shutter Type: Global

Pixel Depth: 12 bit

Exposure Time: 0.025ms - 1900ms

Dynamic Range (dB): 70.00

Machine Vision Standard: USB3 Vision

Electrical

Power Consumption (W): 1 - 2

Hardware & Interface Connectivity

Interface: USB 3.0

Connector: USB Type-C

Power Supply: Power over USB

Please select your shipping country to view the most accurate inventory information, and to determine the correct Edmund Optics sales office for your order.

Select Your Country/Region:

Synchronization: Hardware Trigger (GPIO); Software Trigger

Interface Port Orientation: Back Panel (Right Angle)

GPIO Connector Type: 10-pin Wuerth connector (WR-WTB 1.00 mm)

Threading & Mounting

Mount: S-Mount (M12 x 0.5)

Mounting Threads: N/A

Environmental & Durability Factors

Operating Temperature (°C): 0 to +55

Storage Temperature (°C): -20 to +80

Regulatory Compliance

RoHS 2015: [Exempt](#)

Certificate of Conformance: [View](#)

REACH 241: [Contains SVHC\(s\)](#)

Product Details

- Up to 8.0MP Resolution with Framrates up to 230fps
- Board Level Options with C/CS-Mount or S-Mount Available
- GenICam USB3 Vision Compliant

IDS Imaging uEye LE/XLE USB3.1 Cameras utilize [IDS Imaging's peak SDK platform](#) that supports GenICam and USB3 Vision standards for ease of software development and integration. These cameras are available in board-level or housed options with S-Mount or C/CS-Mount versions. The C/CS-Mount configurations come with a 5mm spacer to easily adapt between C-Mount and CS-Mount lenses. IDS Imaging uEye LE/XLE USB3.1 Cameras are ideal for small device construction, medical technology, robotics, and machine vision applications. With a compact design, the XLE version is suitable for integration into embedded systems whereas the LE version is suitable for small device projects.

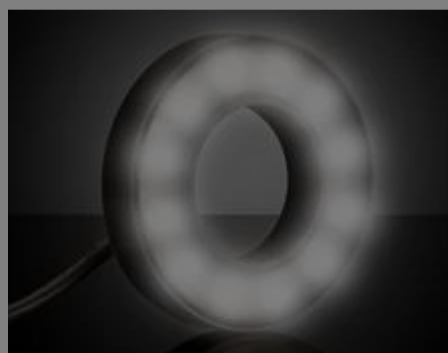
Related Products



IDS Imaging Cameras



Imaging Lenses



Machine Vision Lighting



Teledyne FLIR IIS Oryx@10GigE Cameras

Imaging Lens Selector

- Factory Automation**
- Telecentric**

Please select your shipping country to view the most accurate inventory information, and to determine the correct Edmund Optics sales office for your order.

Select Your Country/Region:

Custom Sensor

Camera Model

Number of Horizontal Pixels:

1

Number of Vertical Pixels:

2

Pixel Size (µm):

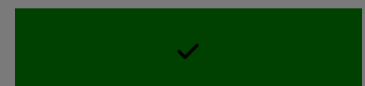
3

Working Distance (mm):

4

Horizontal Field of View (mm):

5



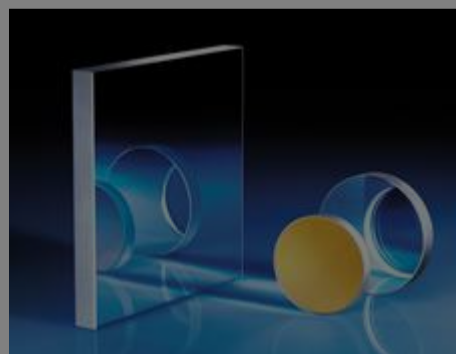
Disclaimer: Values represent theoretical values from lens design software. Actual lens performance varies due to manufacturing tolerances.

Frequently Purchased Together



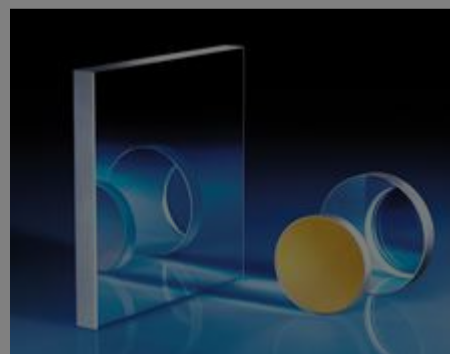
#63-955 - 5mm Length, S-Mount Extension Tube
€27,00

Qty



#32-941 - 10mm Dia Enhanced Aluminum, 4-6λ Mirror
€28,50

Qty



#32-944 - 20mm Dia Enhanced Aluminum, 4-6λ Mirror
€31,00

Qty



#62-535 - Plus Optical Components Cleaning Kit
€150,00

Qty

Resources

Please select your shipping country to view the most accurate inventory information, and to determine the correct Edmund Optics sales office for your order.

Select Your Country/Region:

Media Type

- Application Note
- Video
- Published Article
- FAQ
- Glossary
- Technical Tool



[View More](#)