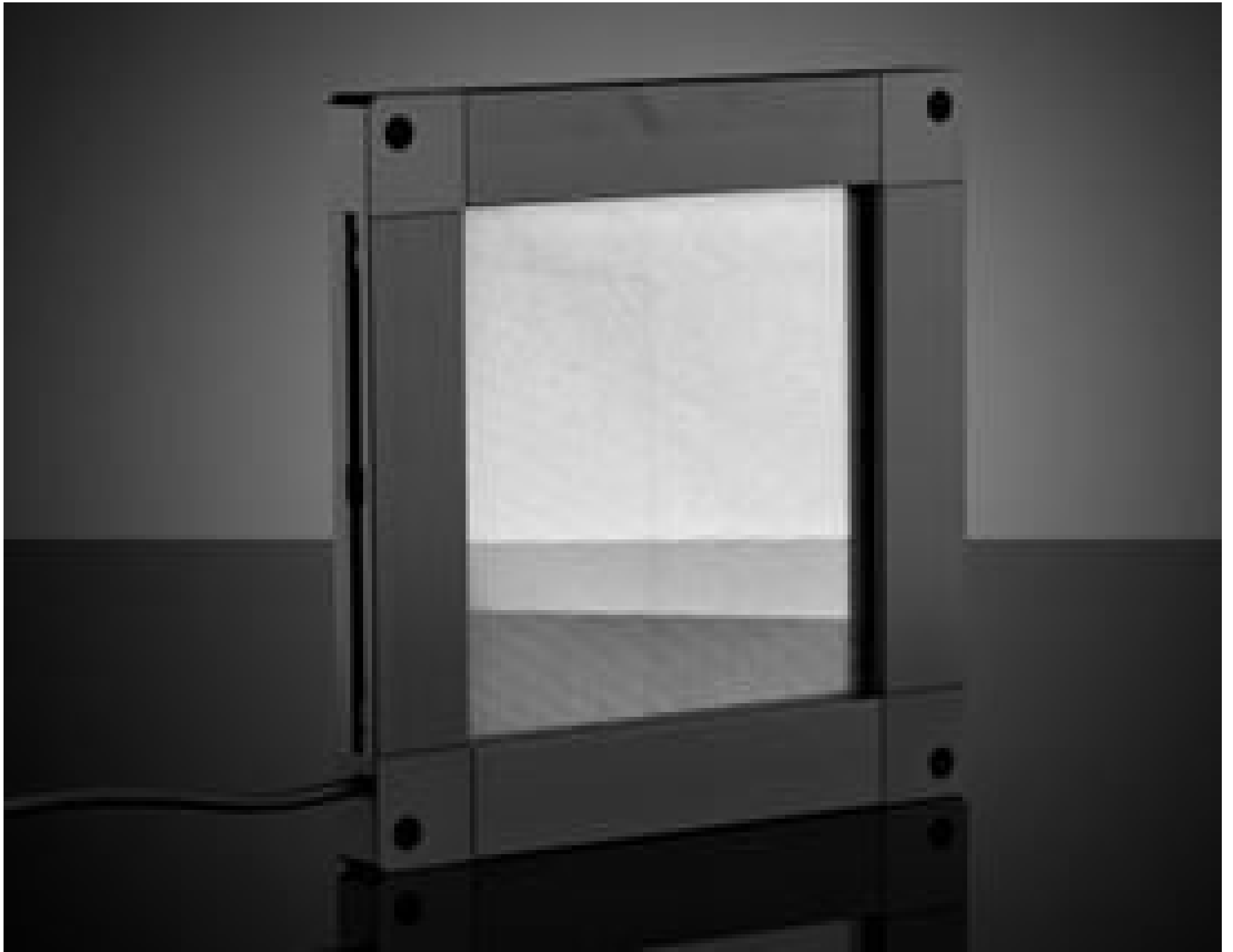


[See all 15 Products in Family](#)

# Line Pattern Flat Light LFX3-100SW-PT-B

See More by [CCS](#)



Stock #21-824 **1 In Stock**

⊖ 1 ⊕ €2.785<sup>00</sup>

**ADD TO CART**

## Volume Pricing

Qty 1+	€2.785,00 each
Need More?	<a href="#">Request Quote</a>

ⓘ Prices shown are exclusive of VAT/local taxes

## Product Downloads

### General

LFX3-100SW-PT-B **Model Number:**

LED Illuminator **Type of Illumination:**

CCS **Manufacturer:**

Flat Light **Geometry:**

**Illumination Mode:**

Constant

**Physical & Mechanical Properties****Dimensions (mm):**

W 143 mm xD 143 mm xH 13.1 mm

**Weight (g):**

400

**Optical Properties****Color:**

White

**Electrical****Power Consumption (W):**

23

**Hardware & Interface Connectivity****Input Voltage (V):**

24

**Power Supply:**

Power Supply Required and Sold Separately.

USA: [#73-491](#)Europe: [#73-491](#)Japan: [#89-513](#)Korea: [#33-773](#)China: [#73-491](#)**Environmental & Durability Factors****Color Temperature (K):**

6800

**Regulatory Compliance****RoHS 2015:**[Exempt](#)**Reach 224:**[Contains SVHC\(s\)](#)**Certificate of Conformance:**[View](#)**Product Details**

- Detect Imperfections on Reflective Surfaces
- Line Pattern Projected Through Light Guiding Diffusion Plate
- Multiple Wavelengths and Working Distances Available

CCS Coaxial Line Pattern Flat Lights feature a line pattern on the surface of a light guiding diffusion plate which allows for the detection of minute bumps and dents on reflective surfaces. When integrated into a machine vision system, the image of the reflected line pattern highlights defects by breaking the continuity of the surface and distorting the line pattern. These flat lights are available with two pitch options, 1mm for shorter working distances and 2mm for longer working distances. CCS Coaxial Line Pattern Flat Lights are ideal for inspection of reflective surfaces such as mirrors, metal sheets, glass surfaces, and reflective films.

**Technical Information**

**Two types of line patterns available**

Select one to match your inspection conditions.

**Imaging examples**

**Narrow pitch** **1 mm type** **2 mm type** **Wide pitch**

LFX3-PT-A Series LFX3-PT-B Series

Distance: 30 mm Distance: 100 mm

Camera Light Unit Workpiece

The distance from the Light Unit to the workpiece is short. The distance from the Light Unit to the workpiece is long.

**Example configuration (LFX3-100-PT)**

Camera Light-guiding diffusion plate LED Workpiece

**Imaging example: Imaging the external appearance of metal plate**

LED Coaxial Light LFX3 Line Pattern Light

Workpiece: Metal plate

Coaxial Lights illuminate the whole surface evenly, making it difficult to detect the bumps. Line Pattern Lights highlight the bumps as curved lines.